



SZABO SCANDIC

Part of Europa Biosite

Produktinformation



Forschungsprodukte & Biochemikalien



Zellkultur & Verbrauchsmaterial



Diagnostik & molekulare Diagnostik



Laborgeräte & Service

Weitere Information auf den folgenden Seiten!
See the following pages for more information!



Lieferung & Zahlungsart

siehe unsere [Liefer- und Versandbedingungen](#)

Zuschläge

- Mindermengenzuschlag
- Trockeneiszuschlag
- Gefahrgutzuschlag
- Expressversand

SZABO-SCANDIC HandelsgmbH

Quellenstraße 110, A-1100 Wien

T. +43(0)1 489 3961-0

F. +43(0)1 489 3961-7

mail@szabo-scandic.com

www.szabo-scandic.com

[linkedin.com/company/szaboscandic](https://www.linkedin.com/company/szaboscandic) 



MASP1 purified MaxPab rabbit polyclonal antibody (D01P) MaxPab®

Catalog # : H00005648-D01P

規格 : [100 ug]

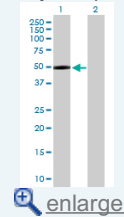
[List All](#)

Specification

Product Description:	Rabbit polyclonal antibody raised against a full-length human MASP1 protein.
Immunogen:	MASP1 (NP_001027019.1, 1 a.a. ~ 380 a.a) full-length human protein.
Sequence:	MRWLLLYALCFSLSKASAHTVELNNMFGQIQSPGYPDSYPSDSEVTWN ITVPDGFRIKLYFMHFNLESSYLCEYDYVKVETEDQVLATFCGRETDTDE QTPGQEVVLSPGSFMSITFRSDFSNERRFTGFDAHYMAVDVDECKERE DEELSCDHCHNYIGGYCSCRFGYILHTDNRTCVRVCSNLFRTQRTGVI TSPDFPNYPKSSECLYTIIEEFGFMVNLQFEDIFDIEDHPEVPCPYDYIKI KVGPKVLGPFCEKAPEPISTQSHSVLILFSDNSGENRGWRLSYRAAG NEPELQPPVHGKIEPSQAKYFFKDQVLVSCDTGYKVLKDNVEMDTFQI ECLKDGTWSNKIPTCKKNEIDLESELKSEQVTE
Host:	Rabbit
Reactivity:	Human
Quality Control Testing:	Antibody reactive against mammalian transfected lysate.
Storage Buffer:	In 1x PBS, pH 7.4
Storage Instruction:	Store at -20°C or lower. Aliquot to avoid repeated freezing and thawing.
MSDS:	 Download
Datasheet:	 Download

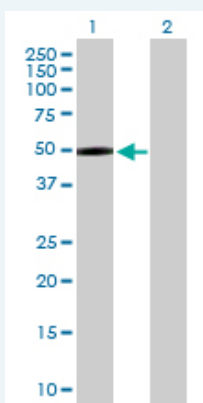
Application Image

Western Blot (Transfected lysate)



Applications

Western Blot (Transfected lysate)



Western Blot analysis of MASP1 expression in transfected 293T cell line ([H00005648-T02](#)) by MASP1 MaxPab polyclonal antibody.

Lane 1: MASP1 transfected lysate(43.60 KDa).

Lane 2: Non-transfected lysate.

 [Protocol Download](#)

Gene Information

Entrez GeneID: [5648](#)

**GeneBank
Accession#:** [NM_001031849](#)

**Protein
Accession#:** [NP_001027019.1](#)

Gene Name: MASP1

Gene Alias: CRARF,CRARF1,DKFZp686I01199,FLJ26383,MASP,MGC126283,MGC126284,PRSS5,RaRF

**Gene
Description:** mannan-binding lectin serine peptidase 1 (C4/C2 activating component of Ra-reactive factor)

Omim ID: [600521](#)

Gene Ontology: [Hyperlink](#)

Gene Summary: The Ra-reactive factor (RARF) is a complement-dependent bactericidal factor that binds to the Ra and R2 polysaccharides expressed by certain enterobacteria. Alternate splicing of this gene results in multiple transcript variants encoding two RARF components that are involved in the mannan-binding lectin (MBL) pathway of complement activation. Two of the isoforms are cleaved into two chains which form a heterodimer linked by a disulfide bond. The encoded proteins are members of the trypsin family of peptidases. [provided by RefSeq]

**Other
Designations:** Ra-reactive factor serine protease p100,manan-binding lectin serine protease-1,mannan-binding lectin serine protease 1,mannan-binding lectin serine protease 1 (C4/C2 activating component of Ra-reactive factor),mannan-binding lectin serine protease 1, isof

Gene Pathway

[Complement and coagulation cascades](#)

Related Disease

[Birth Weight](#) [Genetic Predisposition to Disease](#) [Glioblastoma](#) [Glioma](#) [Inflammation](#)
[Leukemia](#) [Leukemia, Myeloid, Acute](#) [Lung Neoplasms](#) [Lupus Erythematosus, Systemic](#)
[Macular Degeneration](#) [Meningeal Neoplasms](#) [Meningioma](#)
[Pulmonary Disease, Chronic Obstructive](#) [Sepsis Syndrome](#) [Urinary Bladder Neoplasms](#)
[Werner syndrome](#)

[服務條款](#) | [隱私權政策](#) | [著作及商標](#) | [網站地圖](#)

©2016 亞諾法生技股份有限公司 Abnova Corporation. 版權所有.