



# SZABO SCANDIC

Part of Europa Biosite

## Produktinformation



Forschungsprodukte & Biochemikalien



Zellkultur & Verbrauchsmaterial



Diagnostik & molekulare Diagnostik



Laborgeräte & Service

Weitere Information auf den folgenden Seiten!  
See the following pages for more information!



### Lieferung & Zahlungsart

siehe unsere [Liefer- und Versandbedingungen](#)

### Zuschläge

- Mindermengenzuschlag
- Trockeneiszuschlag
- Gefahrgutzuschlag
- Expressversand

### SZABO-SCANDIC HandelsgmbH

Quellenstraße 110, A-1100 Wien

T. +43(0)1 489 3961-0

F. +43(0)1 489 3961-7

[mail@szabo-scandic.com](mailto:mail@szabo-scandic.com)

[www.szabo-scandic.com](http://www.szabo-scandic.com)

[linkedin.com/company/szaboscandic](https://www.linkedin.com/company/szaboscandic) 

## MASP1 293T Cell Transient Overexpression Lysate(Denatured)

Catalog # : H00005648-T01

規格 : [ 100 uL ]

List All

### Specification

**Transfected Cell Line:** 293T

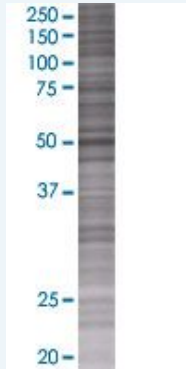
**Plasmid:** pCMV-MASP1 full-length

**Host:** Human

**Theoretical MW (kDa):** 43.6

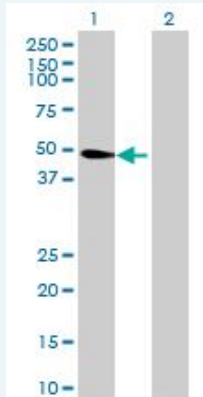
**Quality Control Testing:** Transient overexpression cell lysate was tested with Anti-MASP1 antibody ([H00005648-B01](#)) by Western Blots.

#### SDS-PAGE Gel



MASP1 transfected lysate.

#### Western Blot



Lane 1: MASP1 transfected lysate ( 43.6 KDa)

Lane 2: Non-transfected lysate.

**Storage Buffer:** 1X Sample Buffer (50 mM Tris-HCl, 2% SDS, 10% glycerol, 300 mM 2-mercaptoethanol, 0.01% Bromophenol blue)

**Storage Instruction:** Store at -80°C. Aliquot to avoid repeated freezing and thawing.

**MSDS:**  [Download](#)

### Applications

### Application Image

Western Blot

## Western Blot

### Gene Information

Entrez GeneID: [5648](#)

GeneBank Accession#: [NM\\_001031849](#)

Protein Accession#: [NP\\_001027019](#)

Gene Name: MASP1

Gene Alias: CRARF, CRARF1, DKFZp686i01199, FLJ26383, MASP, MGC126283, MGC126284, PRSS5, RaRF

Gene Description: mannan-binding lectin serine peptidase 1 (C4/C2 activating component of Ra-reactive factor)

Omim ID: [600521](#)

Gene Ontology: [Hyperlink](#)

**Gene Summary:** The Ra-reactive factor (RARF) is a complement-dependent bactericidal factor that binds to the Ra and R2 polysaccharides expressed by certain enterobacteria. Alternate splicing of this gene results in multiple transcript variants encoding two RARF components that are involved in the mannan-binding lectin (MBL) pathway of complement activation. Two of the isoforms are cleaved into two chains which form a heterodimer linked by a disulfide bond. The encoded proteins are members of the trypsin family of peptidases. [provided by RefSeq]

**Other Designations:** Ra-reactive factor serine protease p100, mannan-binding lectin serine protease-1, mannan-binding lectin serine protease 1, mannan-binding lectin serine protease 1 (C4/C2 activating component of Ra-reactive factor), mannan-binding lectin serine protease 1, isof

### Gene Pathway

[Complement and coagulation cascades](#)

### Related Disease

[Birth Weight](#) [Genetic Predisposition to Disease](#) [Glioblastoma](#) [Glioma](#) [Inflammation](#) [Leukemia](#) [Leukemia, Myeloid, Acute](#) [Lung Neoplasms](#) [Lupus Erythematosus, Systemic](#) [Macular Degeneration](#) [Meningeal Neoplasms](#) [Meningioma](#) [Pulmonary Disease, Chronic Obstructive](#) [Sepsis Syndrome](#) [Urinary Bladder Neoplasms](#) [Werner syndrome](#)

[服務條款](#) | [隱私權政策](#) | [著作及商標](#) | [網站地圖](#)

©2016 亞諾法生技股份有限公司 Abnova Corporation. 版權所有.