



SZABO SCANDIC

Part of Europa Biosite

Produktinformation



Forschungsprodukte & Biochemikalien



Zellkultur & Verbrauchsmaterial



Diagnostik & molekulare Diagnostik



Laborgeräte & Service

Weitere Information auf den folgenden Seiten!
See the following pages for more information!



Lieferung & Zahlungsart

siehe unsere [Liefer- und Versandbedingungen](#)

Zuschläge

- Mindermengenzuschlag
- Trockeneiszuschlag
- Gefahrgutzuschlag
- Expressversand

SZABO-SCANDIC HandelsgmbH

Quellenstraße 110, A-1100 Wien

T. +43(0)1 489 3961-0

F. +43(0)1 489 3961-7

mail@szabo-scandic.com

www.szabo-scandic.com



[linkedin.com/company/szaboscandic](https://www.linkedin.com/company/szaboscandic) 

KLK7 purified MaxPab mouse polyclonal antibody (B01P) MaxPab®

Catalog # : H00005650-B01P

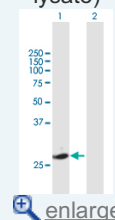
規格 : [50 ug]

[List All](#)
Specification

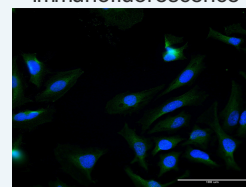
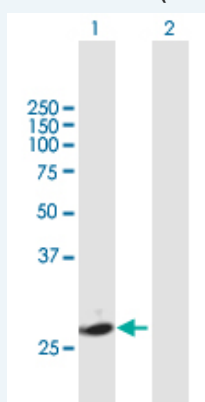
Product Description:	Mouse polyclonal antibody raised against a full-length human KLK7 protein.
Immunogen:	KLK7 (AAH32005, 1 a.a. ~ 253 a.a) full-length human protein.
Sequence:	MARSLLLPLQILLLSLALETAGEEAAQGDKIIDGAPCARGSHPWQVALLSG NQLHCGGVLVNERWVLTAAHCKMNEYTVHLGSDTLGDRRAQRIKASKS FRHPGYSTQTHVNDLMLVKLNSQARLSSMVKKVRLPSRCEPPGTTCTV SGWGTTTSPDVTFPSDLMCVDVKLISPQDCTKVYKDLLENSMLCAGIPD SKKNACNGDSGGPLVCRGTLQGLVSWGTFPCGQPNDPGVYVYQVCKFT KWINDTMKKHR
Host:	Mouse
Reactivity:	Human
Quality Control Testing:	Antibody reactive against mammalian transfected lysate.
Storage Buffer:	In 1x PBS, pH 7.4
Storage Instruction:	Store at -20°C or lower. Aliquot to avoid repeated freezing and thawing.
MSDS:	 Download
Datasheet:	 Download

Application Image

Western Blot (Transfected lysate)


 [enlarge](#)

Immunofluorescence

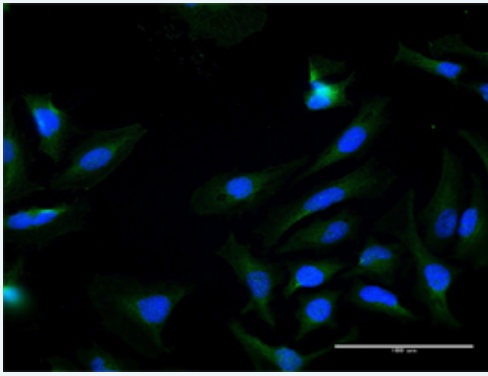

 [enlarge](#)
Applications
Western Blot (Transfected lysate)


Western Blot analysis of KLK7 expression in transfected 293T cell line ([H00005650-T01](#)) by KLK7 MaxPab polyclonal antibody.

Lane 1: KLK7 transfected lysate(27.94 KDa).

Lane 2: Non-transfected lysate.

 [Protocol Download](#)
Immunofluorescence



[enlarge this image](#)

Immunofluorescence of purified MaxPab antibody to KLK7 on HeLa cell. [antibody concentration 10 ug/ml]

 [Protocol Download](#)

Gene Information

Entrez GeneID: [5650](#)

**GeneBank
Accession#:** [BC032005](#)

**Protein
Accession#:** [AAH32005](#)

Gene Name: KLK7

Gene Alias: PRSS6,SCCE

**Gene
Description:** kallikrein-related peptidase 7

Omim ID: [604438](#)

Gene Ontology: [Hyperlink](#)

Gene Summary: Kallikreins are a subgroup of serine proteases having diverse physiological functions. Growing evidence suggests that many kallikreins are implicated in carcinogenesis and some have potential as novel cancer and other disease biomarkers. This gene is one of the fifteen kallikrein subfamily members located in a cluster on chromosome 19. Its encoded enzyme is thought to be involved in the proteolysis of intercellular cohesive structures preceding desquamation, which is the shedding of the outermost layer of the epidermis. Alternative splicing of this gene results in two transcript variants encoding the same protein. [provided by RefSeq]

**Other
Designations:** kallikrein 7 (chymotryptic, stratum corneum),protease, serine, 6,signal protein,stratum corneum chymotryptic enzyme

Related Disease

[Asthma](#) [Birth Weight](#) [Dermatitis](#), [Atopic Eczema](#) [Genetic Predisposition to Disease](#)
[Glioblastoma](#) [Glioma](#) [Leukemia](#) [Leukemia, Myeloid](#), [Acute Meningeal Neoplasms](#)
[Meningioma](#) [Prostatic Neoplasms](#)