



# SZABO SCANDIC

Part of Europa Biosite

## Produktinformation



Forschungsprodukte & Biochemikalien



Zellkultur & Verbrauchsmaterial



Diagnostik & molekulare Diagnostik



Laborgeräte & Service

Weitere Information auf den folgenden Seiten!  
See the following pages for more information!



### Lieferung & Zahlungsart

siehe unsere [Liefer- und Versandbedingungen](#)

### Zuschläge

- Mindermengenzuschlag
- Trockeneiszuschlag
- Gefahrgutzuschlag
- Expressversand

### SZABO-SCANDIC HandelsgmbH

Quellenstraße 110, A-1100 Wien

T. +43(0)1 489 3961-0

F. +43(0)1 489 3961-7

[mail@szabo-scandic.com](mailto:mail@szabo-scandic.com)

[www.szabo-scandic.com](http://www.szabo-scandic.com)

[linkedin.com/company/szaboscandic](https://www.linkedin.com/company/szaboscandic) 

## KLK7 purified MaxPab rabbit polyclonal antibody (D01P) MaxPab®

Catalog # : H00005650-D01P

規格 : [ 100 ug ]

[List All](#)

### Specification

**Product Description:** Rabbit polyclonal antibody raised against a full-length human KLK7 protein.

**Immunogen:** KLK7 (NP\_005037.1, 1 a.a. ~ 253 a.a) full-length human protein.

**Sequence:**  
 MARSLLLPLQILLLSLALETAGEEAAQGDKIIDGAPCARGSHPWQVALLSG  
 NQLHCGGVLVNERWVLTAAHCKMNEYTVHLGSDTLGDRRAQRIKASKS  
 FRHPGYSTQTHVNDLMLVKLNSQARLSSMVKKVRLPSRCEPPGTTCTV  
 SGWGTTTSPDVTFPSDLMCVDVKLISPQDCTKVYKDLENSMLCAGIPD  
 SKKNACNGDSGGPLVCRGTLQGLVSWGTFPCGQPNDPGVYTQVCKFT  
 KWINDTMKKHR

**Host:** Rabbit

**Reactivity:** Human

**Quality Control Testing:** Antibody reactive against mammalian transfected lysate.

**Storage Buffer:** In 1x PBS, pH 7.4

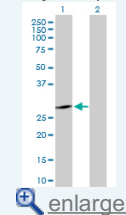
**Storage Instruction:** Store at -20°C or lower. Aliquot to avoid repeated freezing and thawing.

**MSDS:** [Download](#)

**Datasheet:** [Download](#)

### Application Image

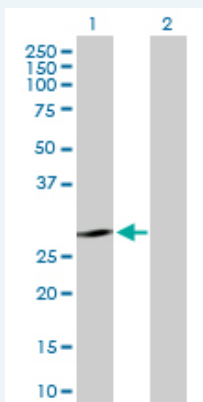
Western Blot (Transfected lysate)



[enlarge](#)

### Applications

Western Blot (Transfected lysate)



Western Blot analysis of KLK7 expression in transfected 293T cell line ([H00005650-T02](#)) by KLK7 MaxPab polyclonal antibody.

Lane 1: KLK7 transfected lysate(27.50 KDa).

Lane 2: Non-transfected lysate.

[Protocol Download](#)

### Gene Information

**Entrez GeneID:** [5650](#)

**GeneBank  
Accession#:** [NM\\_005046.2](#)

**Protein  
Accession#:** [NP\\_005037.1](#)

**Gene Name:** KLK7

**Gene Alias:** PRSS6,SCCE

**Gene  
Description:** kallikrein-related peptidase 7

**Omim ID:** [604438](#)

**Gene Ontology:** [Hyperlink](#)

**Gene Summary:** Kallikreins are a subgroup of serine proteases having diverse physiological functions. Growing evidence suggests that many kallikreins are implicated in carcinogenesis and some have potential as novel cancer and other disease biomarkers. This gene is one of the fifteen kallikrein subfamily members located in a cluster on chromosome 19. Its encoded enzyme is thought to be involved in the proteolysis of intercellular cohesive structures preceding desquamation, which is the shedding of the outermost layer of the epidermis. Alternative splicing of this gene results in two transcript variants encoding the same protein. [provided by RefSeq]

**Other  
Designations:** kallikrein 7 (chymotryptic, stratum corneum),protease, serine, 6,signal protein,stratum corneum chymotryptic enzyme

#### **Related Disease**

[Asthma](#) [Birth Weight](#) [Dermatitis, Atopic](#) [Eczema](#) [Genetic Predisposition to Disease](#)  
[Glioblastoma](#) [Glioma](#) [Leukemia](#) [Leukemia, Myeloid, Acute](#) [Meningeal Neoplasms](#)  
[Meningioma](#) [Prostatic Neoplasms](#)

[服務條款](#) | [隱私權政策](#) | [著作及商標](#) | [網站地圖](#)

©2016 亞諾法生技股份有限公司 Abnova Corporation. 版權所有.