



SZABO SCANDIC

Part of Europa Biosite

Produktinformation



Forschungsprodukte & Biochemikalien



Zellkultur & Verbrauchsmaterial



Diagnostik & molekulare Diagnostik



Laborgeräte & Service

Weitere Information auf den folgenden Seiten!
See the following pages for more information!



Lieferung & Zahlungsart

siehe unsere [Liefer- und Versandbedingungen](#)

Zuschläge

- Mindermengenzuschlag
- Trockeneiszuschlag
- Gefahrgutzuschlag
- Expressversand

SZABO-SCANDIC HandelsgmbH

Quellenstraße 110, A-1100 Wien

T. +43(0)1 489 3961-0

F. +43(0)1 489 3961-7

mail@szabo-scandic.com

www.szabo-scandic.com

[linkedin.com/company/szaboscandic](https://www.linkedin.com/company/szaboscandic) 

KLK7 (Human) IP-WB Antibody Pair

Catalog # : H00005650-PW2

規格 : [1 Set]

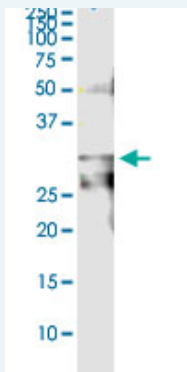
List All

Specification

Product Description: This IP-WB antibody pair set comes with one antibody for immunoprecipitation and another to detect the precipitated protein in western blot.

Reactivity: Human

Quality Control Testing: Immunoprecipitation-Western Blot (IP-WB)



Immunoprecipitation of KLK7 transfected lysate using rabbit polyclonal anti-KLK7 and Protein A Magnetic Bead ([U0007](#)), and immunoblotted with mouse purified polyclonal anti-KLK7.

Supplied Product: Antibody pair set content:
1. Antibody pair for IP: rabbit polyclonal anti-KLK7 (300 ul)
2. Antibody pair for WB: mouse purified polyclonal anti-KLK7 (50 ug)

Storage Instruction: Store reagents of the antibody pair set at -20°C or lower. Please aliquot to avoid repeated freeze thaw cycle. Reagents should be returned to -20°C storage immediately after use.

Applications

Immunoprecipitation-Western Blot

 [Protocol Download](#)

Gene Information

Entrez GeneID: [5650](#)

Gene Name: KLK7

Gene Alias: PRSS6, SCCE

Gene Description: kallikrein-related peptidase 7

Omim ID: [604438](#)

Gene Ontology: [Hyperlink](#)

Gene Summary: Kallikreins are a subgroup of serine proteases having diverse

physiological functions. Growing evidence suggests that many kallikreins are implicated in carcinogenesis and some have potential as novel cancer and other disease biomarkers. This gene is one of the fifteen kallikrein subfamily members located in a cluster on chromosome 19. Its encoded enzyme is thought to be involved in the proteolysis of intercellular cohesive structures preceding desquamation, which is the shedding of the outermost layer of the epidermis. Alternative splicing of this gene results in two transcript variants encoding the same protein. [provided by RefSeq]

Other Designations: kallikrein 7 (chymotryptic, stratum corneum),protease, serine, 6,signal protein,stratum corneum chymotryptic enzyme

Related Disease

[Asthma](#) [Birth Weight](#) [Dermatitis, Atopic](#) [Eczema](#) [Genetic Predisposition to Disease](#)
[Glioblastoma](#) [Glioma](#) [Leukemia](#) [Leukemia, Myeloid, Acute](#) [Meningeal Neoplasms](#)
[Meningioma](#) [Prostatic Neoplasms](#)

[服務條款](#) | [隱私權政策](#) | [著作及商標](#) | [網站地圖](#)

©2016 亞諾法生技股份有限公司 Abnova Corporation. 版權所有.