



# SZABO SCANDIC

Part of Europa Biosite

## Produktinformation



Forschungsprodukte & Biochemikalien



Zellkultur & Verbrauchsmaterial



Diagnostik & molekulare Diagnostik



Laborgeräte & Service

Weitere Information auf den folgenden Seiten!  
See the following pages for more information!



### Lieferung & Zahlungsart

siehe unsere [Liefer- und Versandbedingungen](#)

### Zuschläge

- Mindermengenzuschlag
- Trockeneiszuschlag
- Gefahrgutzuschlag
- Expressversand

### SZABO-SCANDIC HandelsgmbH

Quellenstraße 110, A-1100 Wien

T. +43(0)1 489 3961-0

F. +43(0)1 489 3961-7

[mail@szabo-scandic.com](mailto:mail@szabo-scandic.com)

[www.szabo-scandic.com](http://www.szabo-scandic.com)

[linkedin.com/company/szaboscandic](https://www.linkedin.com/company/szaboscandic) 

## KLK7 293T Cell Transient Overexpression Lysate(Denatured)

Catalog # : H00005650-T02

規格 : [ 100 uL ]

[List All](#)

### Specification

**Transfected Cell Line:** 293T

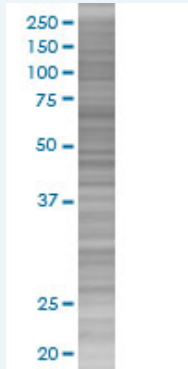
**Plasmid:** pCMV-KLK7 full-length

**Host:** Human

**Theoretical MW (kDa):** 27.5

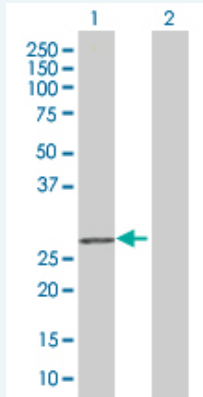
**Quality Control Testing:** Transient overexpression cell lysate was tested with Anti-KLK7 antibody (H00005650-B02) by Western Blots.

#### SDS-PAGE Gel



KLK7 transfected lysate.

#### Western Blot



Lane 1: KLK7 transfected lysate ( 27.5 KDa)

Lane 2: Non-transfected lysate.

**Storage Buffer:** 1X Sample Buffer (50 mM Tris-HCl, 2% SDS, 10% glycerol, 300 mM 2-mercaptoethanol, 0.01% Bromophenol blue)

**Storage Instruction:** Store at -80°C. Aliquot to avoid repeated freezing and thawing.

**MSDS:**  [Download](#)

### Applications

### Application Image

Western Blot

## Western Blot

### Gene Information

Entrez GeneID: [5650](#)

GeneBank Accession#: [NM\\_005046.2](#)

Protein Accession#: =

Gene Name: KLK7

Gene Alias: PRSS6,SCCE

Gene Description: kallikrein-related peptidase 7

Omim ID: [604438](#)

Gene Ontology: [Hyperlink](#)

**Gene Summary:** Kallikreins are a subgroup of serine proteases having diverse physiological functions. Growing evidence suggests that many kallikreins are implicated in carcinogenesis and some have potential as novel cancer and other disease biomarkers. This gene is one of the fifteen kallikrein subfamily members located in a cluster on chromosome 19. Its encoded enzyme is thought to be involved in the proteolysis of intercellular cohesive structures preceding desquamation, which is the shedding of the outermost layer of the epidermis. Alternative splicing of this gene results in two transcript variants encoding the same protein. [provided by RefSeq]

**Other Designations:** kallikrein 7 (chymotryptic, stratum corneum),protease, serine, 6,signal protein,stratum corneum chymotryptic enzyme

### Related Disease

[Asthma](#) [Birth Weight](#) [Dermatitis](#) [Atopic Eczema](#) [Genetic Predisposition to Disease](#)  
[Glioblastoma](#) [Glioma](#) [Leukemia](#) [Leukemia, Myeloid](#) [Acute Meningeal Neoplasms](#)  
[Meningioma](#) [Prostatic Neoplasms](#)

[服務條款](#) | [隱私權政策](#) | [著作及商標](#) | [網站地圖](#)

©2016 亞諾法生技股份有限公司 Abnova Corporation. 版權所有.