



SZABO SCANDIC

Part of Europa Biosite

Produktinformation



Forschungsprodukte & Biochemikalien



Zellkultur & Verbrauchsmaterial



Diagnostik & molekulare Diagnostik



Laborgeräte & Service

Weitere Information auf den folgenden Seiten!
See the following pages for more information!



Lieferung & Zahlungsart

siehe unsere [Liefer- und Versandbedingungen](#)

Zuschläge

- Mindermengenzuschlag
- Trockeneiszuschlag
- Gefahrgutzuschlag
- Expressversand

SZABO-SCANDIC HandelsgmbH

Quellenstraße 110, A-1100 Wien

T. +43(0)1 489 3961-0

F. +43(0)1 489 3961-7

mail@szabo-scandic.com

www.szabo-scandic.com

[linkedin.com/company/szaboscandic](https://www.linkedin.com/company/szaboscandic) 

PRSS8 polyclonal antibody (A01)

Catalog # : H00005652-A01

規格 : [50 uL]

List All

Specification

Product Description: Mouse polyclonal antibody raised against a partial recombinant PRSS8.

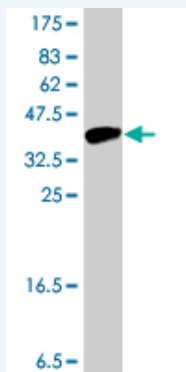
Immunogen: PRSS8 (NP_002764, 33 a.a. ~ 131 a.a) partial recombinant protein with GST tag.

Sequence: AEAPCGVAPQARITGGSSAVAGQWPWQVSITYEGVHVCGGSLVSEQW
VLSAAHCFPSEHHKEAYEVKLG AHQLDSYSEDAKVSTLKDIIHPHPSYQLQEG
S

Host: Mouse

Reactivity: Human

Quality Control Testing: Antibody Reactive Against Recombinant Protein.



Western Blot detection against Immunogen (37 KDa) .

Storage Buffer: 50 % glycerol

Storage Instruction: Store at -20°C or lower. Aliquot to avoid repeated freezing and thawing.

MSDS: [Download](#)

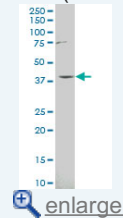
Datasheet: [Download](#)

Applications

Western Blot (Tissue lysate)

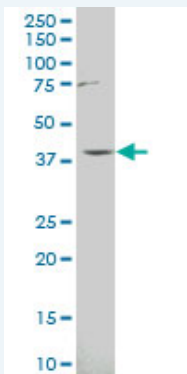
Application Image

Western Blot (Tissue lysate)



Western Blot (Recombinant protein)

ELISA



PRSS8 polyclonal antibody (A01), Lot # 060529JCS1. Western Blot analysis of PRSS8 expression in human ovarian cancer.

 [Protocol Download](#)

Western Blot (Recombinant protein)

 [Protocol Download](#)

ELISA

Gene Information

Entrez GeneID: [5652](#)

GeneBank Accession#: [NM_002773](#)

Protein Accession#: [NP_002764](#)

Gene Name: PRSS8

Gene Alias: CAP1,PROSTASIN

Gene Description: protease, serine, 8

Omim ID: [600823](#)

Gene Ontology: [Hyperlink](#)

Gene Summary: This gene encodes a trypsinogen, which is a member of the trypsin family of serine proteases. This enzyme is highly expressed in prostate epithelia and is one of several proteolytic enzymes found in seminal fluid. The proprotein is cleaved to produce a light chain and a heavy chain which are associated by a disulfide bond. It is active on peptide linkages involving the carboxyl group of lysine or arginine. [provided by RefSeq]

Other Designations: channel-activating protease 1,prostasin

Related Disease

[Hypertension](#)