



SZABO SCANDIC

Part of Europa Biosite

Produktinformation



Forschungsprodukte & Biochemikalien



Zellkultur & Verbrauchsmaterial



Diagnostik & molekulare Diagnostik



Laborgeräte & Service

Weitere Information auf den folgenden Seiten!
See the following pages for more information!



Lieferung & Zahlungsart

siehe unsere [Liefer- und Versandbedingungen](#)

Zuschläge

- Mindermengenzuschlag
- Trockeneiszuschlag
- Gefahrgutzuschlag
- Expressversand

SZABO-SCANDIC HandelsgmbH

Quellenstraße 110, A-1100 Wien

T. +43(0)1 489 3961-0

F. +43(0)1 489 3961-7

mail@szabo-scandic.com

www.szabo-scandic.com

[linkedin.com/company/szaboscandic](https://www.linkedin.com/company/szaboscandic) 

PRSS8 purified MaxPab mouse polyclonal antibody (B01P) MaxPab®

Catalog # : H00005652-B01P

規格 : [50 ug]

[List All](#)

Specification

Product Description: Mouse polyclonal antibody raised against a full-length human PRSS8 protein.

Immunogen: PRSS8 (NP_002764.1, 1 a.a. ~ 343 a.a) full-length human protein.

Sequence:
 MAQKGVLGPGQLGAVAILLYLGLLRSGTGAEGAEAPCGVAPQARITGG
 SSAVAGQWPWQVSITYEGVHVCSSLVSEQWVLSAAHCFPSEHHKEAY
 EVKLG AHLDSYSED AKVSTLKDIIHPHPSYLQEGSQGDIALQLSRPITFS
 RYIRPICLPAANASFPNGLHCTVTGWGHVAPSVLLTPKPLQQLVPLISR
 ETCNCLYNIDAKPEEPHFVQEDMVCAGYVEGKDACQGDSSGGLSCPV
 EGLWYLTGIVSWG DACGARNRPGVYTLASSYASWISQKVT ELQPRVVP
 QTQESQPDSNL CGSHLAFSSAPAQGLLRPILFLPLGLALGLLSPWLSEH

Host: Mouse

Reactivity: Human

Quality Control Testing: Antibody reactive against mammalian transfected lysate.

Storage Buffer: In 1x PBS, pH 7.4

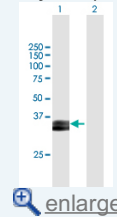
Storage Instruction: Store at -20°C or lower. Aliquot to avoid repeated freezing and thawing.

MSDS:  [Download](#)

Datasheet:  [Download](#)

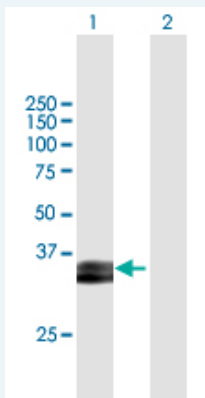
Application Image

Western Blot (Transfected lysate)



Applications


Western Blot (Transfected lysate)



Western Blot analysis of PRSS8 expression in transfected 293T cell line (H00005652-T01) by PRSS8 MaxPab polyclonal antibody.

Lane 1: PRSS8 transfected lysate(37.73 KDa).

Lane 2: Non-transfected lysate.

 [Protocol Download](#)

Gene Information

Entrez GeneID: [5652](#)

**GeneBank
Accession#:** [NM_002773.2](#)

**Protein
Accession#:** [NP_002764.1](#)

Gene Name: PRSS8

Gene Alias: CAP1,PROSTASIN

**Gene
Description:** protease, serine, 8

Omim ID: [600823](#)

Gene Ontology: [Hyperlink](#)

Gene Summary: This gene encodes a trypsinogen, which is a member of the trypsin family of serine proteases. This enzyme is highly expressed in prostate epithelia and is one of several proteolytic enzymes found in seminal fluid. The proprotein is cleaved to produce a light chain and a heavy chain which are associated by a disulfide bond. It is active on peptide linkages involving the carboxyl group of lysine or arginine. [provided by RefSeq]

**Other
Designations:** channel-activating protease 1,prostasin

Related Disease

[Hypertension](#)

[服務條款](#) | [隱私權政策](#) | [著作及商標](#) | [網站地圖](#)

©2016 亞諾法生技股份有限公司 Abnova Corporation. 版權所有.