



SZABO SCANDIC

Part of Europa Biosite

Produktinformation



Forschungsprodukte & Biochemikalien



Zellkultur & Verbrauchsmaterial



Diagnostik & molekulare Diagnostik



Laborgeräte & Service

Weitere Information auf den folgenden Seiten!
See the following pages for more information!



Lieferung & Zahlungsart

siehe unsere [Liefer- und Versandbedingungen](#)

Zuschläge

- Mindermengenzuschlag
- Trockeneiszuschlag
- Gefahrgutzuschlag
- Expressversand

SZABO-SCANDIC HandelsgmbH

Quellenstraße 110, A-1100 Wien

T. +43(0)1 489 3961-0

F. +43(0)1 489 3961-7

mail@szabo-scandic.com

www.szabo-scandic.com

[linkedin.com/company/szaboscandic](https://www.linkedin.com/company/szaboscandic) 

PRSS8 293T Cell Transient Overexpression Lysate(Denatured)

Catalog # : H00005652-T01

規格 : [100 uL]

[List All](#)

Specification

Transfected Cell Line: 293T

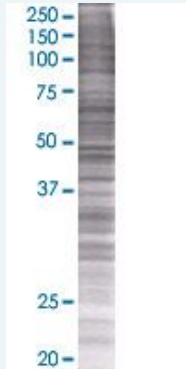
Plasmid: pCMV-PRSS8 full-length

Host: Human

Theoretical MW (kDa): 37.84

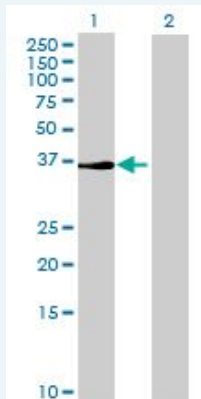
Quality Control Testing: Transient overexpression cell lysate was tested with Anti-PRSS8 antibody ([H00005652-B01](#)) by Western Blots.

SDS-PAGE Gel



PRSS8 transfected lysate.

Western Blot



Lane 1: PRSS8 transfected lysate (37.84 KDa)

Lane 2: Non-transfected lysate.

Storage Buffer: 1X Sample Buffer (50 mM Tris-HCl, 2% SDS, 10% glycerol, 300 mM 2-mercaptoethanol, 0.01% Bromophenol blue)

Storage Instruction: Store at -80°C. Aliquot to avoid repeated freezing and thawing.

MSDS:  [Download](#)

Applications

Western Blot

Gene Information

Entrez GeneID: [5652](#)

GeneBank Accession#: [NM_002773.2](#)

Protein Accession#: [NP_002764.1](#)

Gene Name: PRSS8

Gene Alias: CAP1,PROSTASIN

Gene Description: protease, serine, 8

Omim ID: [600823](#)

Gene Ontology: [Hyperlink](#)

Gene Summary: This gene encodes a trypsinogen, which is a member of the trypsin family of serine proteases. This enzyme is highly expressed in prostate epithelia and is one of several proteolytic enzymes found in seminal fluid. The proprotein is cleaved to produce a light chain and a heavy chain which are associated by a disulfide bond. It is active on peptide linkages involving the carboxyl group of lysine or arginine. [provided by RefSeq]

Other Designations: channel-activating protease 1,prostasin

Related Disease

[Hypertension](#)

[服務條款](#) | [隱私權政策](#) | [著作及商標](#) | [網站地圖](#)

©2016 亞諾法生技股份有限公司 Abnova Corporation. 版權所有.