



SZABO SCANDIC

Part of Europa Biosite

Produktinformation



Forschungsprodukte & Biochemikalien



Zellkultur & Verbrauchsmaterial



Diagnostik & molekulare Diagnostik



Laborgeräte & Service

Weitere Information auf den folgenden Seiten!
See the following pages for more information!



Lieferung & Zahlungsart

siehe unsere [Liefer- und Versandbedingungen](#)

Zuschläge

- Mindermengenzuschlag
- Trockeneiszuschlag
- Gefahrgutzuschlag
- Expressversand

SZABO-SCANDIC HandelsgmbH

Quellenstraße 110, A-1100 Wien

T. +43(0)1 489 3961-0

F. +43(0)1 489 3961-7

mail@szabo-scandic.com

www.szabo-scandic.com

[linkedin.com/company/szaboscandic](https://www.linkedin.com/company/szaboscandic) 

KLK10 monoclonal antibody (M01), clone 1G8

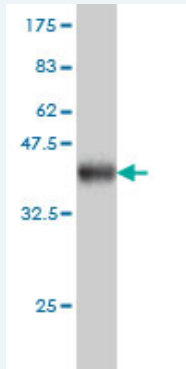
Catalog # : H00005655-M01

規格 : [100 ug]

[List All](#)

Specification

Product Description:	Mouse monoclonal antibody raised against a partial recombinant KLK10.
Immunogen:	KLK10 (NP_002767, 167 a.a. ~ 276 a.a) partial recombinant protein with GST tag. MW of the GST tag alone is 26 KDa.
Sequence:	DQCQVAGWGTTAARRVKYNKGLTCCSSITILSPKECEVFYPGWVTNNMIC AGLDRGQDPCQSDSGGPLVCDLQGILSWGVPYPCGSAQHPAVYTQIC KYMSWINKVIRSN
Host:	Mouse
Reactivity:	Human
Isotype:	IgG1 lambda
Quality Control Testing:	Antibody Reactive Against Recombinant Protein.



Western Blot detection against Immunogen (37.84 KDa) .

Storage Buffer: In 1x PBS, pH 7.4

Storage Instruction: Store at -20°C or lower. Aliquot to avoid repeated freezing and thawing.

MSDS: [Download](#)

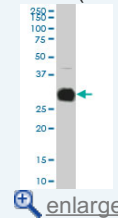
Datasheet: [Download](#)

Applications

Western Blot (Cell lysate)

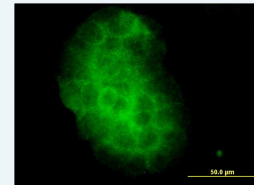
Application Image

Western Blot (Cell lysate)

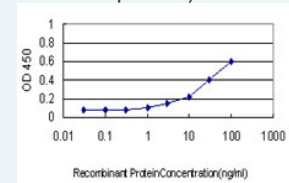


Western Blot (Recombinant protein)

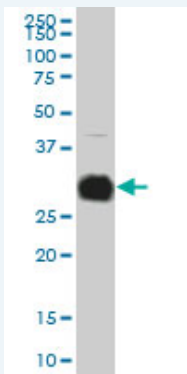
Immunofluorescence



Sandwich ELISA (Recombinant protein)



ELISA



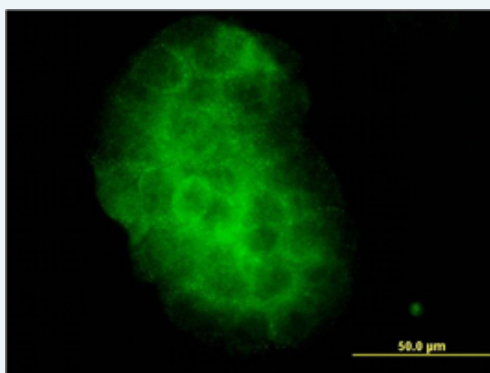
KLK10 monoclonal antibody (M01), clone 1G8 Western Blot analysis of KLK10 expression in A-431(Cat # L015V1).

[Protocol Download](#)

Western Blot (Recombinant protein)

[Protocol Download](#)

Immunofluorescence

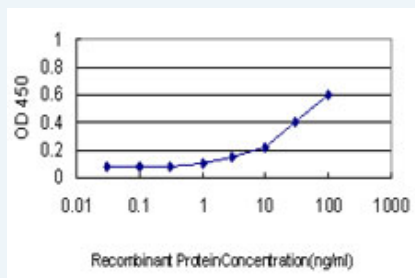


[enlarge this image](#)

Immunofluorescence of monoclonal antibody to KLK10 on A-431 cell. [antibody concentration 10 ug/ml]

[Protocol Download](#)

Sandwich ELISA (Recombinant protein)



Detection limit for recombinant GST tagged KLK10 is approximately 1ng/ml as a capture antibody.

[Protocol Download](#)

ELISA

Gene Information

Entrez GeneID: [5655](#)

GeneBank [NM_002776](#)
Accession#:

Protein [NP_002767](#)
Accession#:

Gene Name: KLK10

Gene Alias: NES1, PRSSL1

Gene kallikrein-related peptidase 10

Description:

Omim ID: [602673](#)

Gene Ontology: [Hyperlink](#)

Gene Summary: Kallikreins are a subgroup of serine proteases having diverse physiological functions. Growing evidence suggests that many kallikreins are implicated in carcinogenesis and some have potential as novel cancer and other disease biomarkers. This gene is one of the fifteen kallikrein subfamily members located in a cluster on chromosome 19. Its encoded protein is secreted and may play a role in suppression of tumorigenesis in breast and prostate cancers. Alternate splicing of this gene results in multiple transcript variants encoding the same protein. [provided by RefSeq]

Other Designations: breast normal epithelial cell associated serine protease,kallikrein 10,normal epithelial cell-specific 1,protease, serine-like, 1

Related Disease

[Adenocarcinoma](#), [Clear Cell Adenocarcinoma](#), [Mucinous Breast cancer](#) [Breast Neoplasms](#) [Cystadenocarcinoma](#), [Serous Endometrial Neoplasms](#) [Genetic Predisposition to Disease](#) [Neoplasms](#), [Glandular and Epithelial Ovarian cancer](#) [Ovarian Neoplasms](#) [Prostate cancer](#) [Prostatic Neoplasms](#) [Testicular Neoplasms](#)

[服務條款](#) | [隱私權政策](#) | [著作及商標](#) | [網站地圖](#)

©2016 亞諾法生技股份有限公司 Abnova Corporation. 版權所有.