



# SZABO SCANDIC

Part of Europa Biosite

## Produktinformation



Forschungsprodukte & Biochemikalien



Zellkultur & Verbrauchsmaterial



Diagnostik & molekulare Diagnostik



Laborgeräte & Service

Weitere Information auf den folgenden Seiten!  
See the following pages for more information!



### Lieferung & Zahlungsart

siehe unsere [Liefer- und Versandbedingungen](#)

### Zuschläge

- Mindermengenzuschlag
- Trockeneiszuschlag
- Gefahrgutzuschlag
- Expressversand

### SZABO-SCANDIC HandelsgmbH

Quellenstraße 110, A-1100 Wien

T. +43(0)1 489 3961-0

F. +43(0)1 489 3961-7

[mail@szabo-scandic.com](mailto:mail@szabo-scandic.com)

[www.szabo-scandic.com](http://www.szabo-scandic.com)

[linkedin.com/company/szaboscandic](https://www.linkedin.com/company/szaboscandic) 

## KLK10 (Human) IP-WB Antibody Pair

Catalog # : H00005655-PW2

規格 : [ 1 Set ]

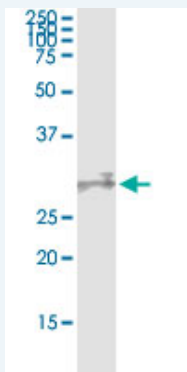
List All

### Specification

**Product Description:** This IP-WB antibody pair set comes with one antibody for immunoprecipitation and another to detect the precipitated protein in western blot.

**Reactivity:** Human

**Quality Control Testing:** Immunoprecipitation-Western Blot (IP-WB)



Immunoprecipitation of KLK10 transfected lysate using rabbit polyclonal anti-KLK10 and Protein A Magnetic Bead ([U000Z](#)), and immunoblotted with mouse purified polyclonal anti-KLK10.

**Supplied Product:** Antibody pair set content:  
1. Antibody pair for IP: rabbit polyclonal anti-KLK10 (300 ul)  
2. Antibody pair for WB: mouse purified polyclonal anti-KLK10 (50 ug)

**Storage Instruction:** Store reagents of the antibody pair set at -20°C or lower. Please aliquot to avoid repeated freeze thaw cycle. Reagents should be returned to -20°C storage immediately after use.

### Applications

Immunoprecipitation-Western Blot

 [Protocol Download](#)

### Gene Information

**Entrez GeneID:** [5655](#)

**Gene Name:** KLK10

**Gene Alias:** NES1, PRSSL1

**Gene Description:** kallikrein-related peptidase 10

**Omim ID:** [602673](#)

**Gene Ontology:** [Hyperlink](#)

**Gene Summary:** Kallikreins are a subgroup of serine proteases having diverse

physiological functions. Growing evidence suggests that many kallikreins are implicated in carcinogenesis and some have potential as novel cancer and other disease biomarkers. This gene is one of the fifteen kallikrein subfamily members located in a cluster on chromosome 19. Its encoded protein is secreted and may play a role in suppression of tumorigenesis in breast and prostate cancers. Alternate splicing of this gene results in multiple transcript variants encoding the same protein. [provided by RefSeq]

---

**Other** breast normal epithelial cell associated serine protease,kallikrein  
**Designations:** 10,normal epithelial cell-specific 1,protease, serine-like, 1

---

### **Related Disease**

---

[Adenocarcinoma, Clear Cell](#) [Adenocarcinoma, Mucinous](#) [Breast cancer](#) [Breast Neoplasms](#)  
[Cystadenocarcinoma, Serous](#) [Endometrial Neoplasms](#) [Genetic Predisposition to Disease](#)  
[Neoplasms, Glandular and Epithelial](#) [Ovarian cancer](#) [Ovarian Neoplasms](#) [Prostate cancer](#)  
[Prostatic Neoplasms](#) [Testicular Neoplasms](#)

---

[服務條款](#) | [隱私權政策](#) | [著作及商標](#) | [網站地圖](#)

©2016 亞諾法生技股份有限公司 Abnova Corporation. 版權所有.