



SZABO SCANDIC

Part of Europa Biosite

Produktinformation



Forschungsprodukte & Biochemikalien



Zellkultur & Verbrauchsmaterial



Diagnostik & molekulare Diagnostik



Laborgeräte & Service

Weitere Information auf den folgenden Seiten!
See the following pages for more information!



Lieferung & Zahlungsart

siehe unsere [Liefer- und Versandbedingungen](#)

Zuschläge

- Mindermengenzuschlag
- Trockeneiszuschlag
- Gefahrgutzuschlag
- Expressversand

SZABO-SCANDIC HandelsgmbH

Quellenstraße 110, A-1100 Wien

T. +43(0)1 489 3961-0

F. +43(0)1 489 3961-7

mail@szabo-scandic.com

www.szabo-scandic.com

[linkedin.com/company/szaboscandic](https://www.linkedin.com/company/szaboscandic) 

PSEN1 polyclonal antibody (A01)

Catalog # : H00005663-A01

規格 : [50 uL]

List All

Specification

Product Description: Mouse polyclonal antibody raised against a partial recombinant PSEN1.

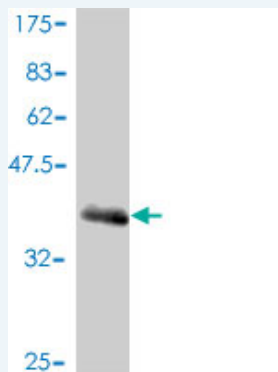
Immunogen: PSEN1 (AAH11729, 280 a.a. ~ 379 a.a) partial recombinant protein with GST tag.

Sequence: PALIYSSTMWLVNMAEGDPEAQRRVSKNSKYNAESTERESQDTVAEND
DGGFSEEWEAQRDShLGPHRSTPESRAAVQELSSSILAGEDPEERGVK
LGL

Host: Mouse

Reactivity: Human

Quality Control Testing: Antibody Reactive Against Recombinant Protein.



Western Blot detection against Immunogen (37 KDa) .

Storage Buffer: 50 % glycerol

Storage Instruction: Store at -20°C or lower. Aliquot to avoid repeated freezing and thawing.

MSDS: [Download](#)

Datasheet: [Download](#)

Applications

Western Blot (Recombinant protein)

[Protocol Download](#)

ELISA

Gene Information

Entrez GeneID: [5663](#)

GeneBank Accession#: [BC011729](#)

Application Image

Western Blot (Recombinant protein)

ELISA

Protein [AAH11729](#)
Accession#:

Gene Name: PSEN1

Gene Alias: AD3,FAD,PS1,S182

Gene presenilin 1
Description:

Omim ID: [104311](#), [172700](#), [600274](#), [607822](#)

Gene Ontology: [Hyperlink](#)

Gene Summary: Alzheimer's disease (AD) patients with an inherited form of the disease carry mutations in the presenilin proteins (PSEN1; PSEN2) or in the amyloid precursor protein (APP). These disease-linked mutations result in increased production of the longer form of amyloid-beta (main component of amyloid deposits found in AD brains). Presenilins are postulated to regulate APP processing through their effects on gamma-secretase, an enzyme that cleaves APP. Also, it is thought that the presenilins are involved in the cleavage of the Notch receptor, such that they either directly regulate gamma-secretase activity or themselves are protease enzymes. Several alternatively spliced transcript variants encoding different isoforms have been identified for this gene, the full-length nature of only some have been determined. [provided by RefSeq]

Other -
Designations:

Gene Pathway

[Alzheimer's disease](#) [Neurotrophin signaling pathway](#) [Notch signaling pathway](#)
[Wnt signaling pathway](#)

Related Disease

[Alzheimer Disease](#) [Alzheimer disease](#) [Amyotrophic Lateral Sclerosis](#)
[Amyotrophic lateral sclerosis](#) [Anomia](#) [Cardiovascular Diseases](#) [Chromosome Disorders](#)
[Cognition](#) [Cognition Disorders](#) [Dementia](#) [Dementia, Vascular](#) [Depressive Disorder, Major](#)
[Diabetes Complications](#) [Disease Progression](#) [Down Syndrome](#)
[Genetic Predisposition to Disease](#) [Headache](#) [Lewy Body Disease](#) [Macular Degeneration](#)

... see more