



# SZABO SCANDIC

Part of Europa Biosite

## Produktinformation



Forschungsprodukte & Biochemikalien



Zellkultur & Verbrauchsmaterial



Diagnostik & molekulare Diagnostik



Laborgeräte & Service

Weitere Information auf den folgenden Seiten!  
See the following pages for more information!



### Lieferung & Zahlungsart

siehe unsere [Liefer- und Versandbedingungen](#)

### Zuschläge

- Mindermengenzuschlag
- Trockeneiszuschlag
- Gefahrgutzuschlag
- Expressversand

### SZABO-SCANDIC HandelsgmbH

Quellenstraße 110, A-1100 Wien

T. +43(0)1 489 3961-0

F. +43(0)1 489 3961-7

[mail@szabo-scandic.com](mailto:mail@szabo-scandic.com)

[www.szabo-scandic.com](http://www.szabo-scandic.com)

[linkedin.com/company/szaboscandic](https://www.linkedin.com/company/szaboscandic) 

## PSEN2 polyclonal antibody (A01)

Catalog # : H00005664-A01

規格 : [ 50 uL ]

[List All](#)

### Specification

**Product Description:** Mouse polyclonal antibody raised against a partial recombinant PSEN2.

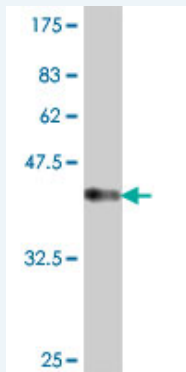
**Immunogen:** PSEN2 (NP\_000438, 1 a.a. ~ 86 a.a) partial recombinant protein with GST tag.

**Sequence:** MLTFMASDSEEEVCDERTSLMSAESPTPRSCQEGRQGPEDGENTAQW  
RSQENEEDGEEDPDRYVCSGVPGRPPGLEEELTLKYGAK

**Host:** Mouse

**Reactivity:** Human

**Quality Control Testing:** Antibody Reactive Against Recombinant Protein.



Western Blot detection against Immunogen (35.57 KDa) .

**Storage Buffer:** 50 % glycerol

**Storage Instruction:** Store at -20°C or lower. Aliquot to avoid repeated freezing and thawing.

**MSDS:** [Download](#)

**Datasheet:** [Download](#)

### Applications

**Western Blot (Recombinant protein)**

[Protocol Download](#)

**ELISA**

### Gene Information

**Entrez GeneID:** [5664](#)

**GeneBank Accession#:** [NM\\_000447](#)

### Application Image

Western Blot (Recombinant protein)

ELISA

**Protein** [NP\\_000438](#)

**Accession#:**

**Gene Name:** PSEN2

**Gene Alias:** AD3L,AD4,PS2,STM2

**Gene** presenilin 2 (Alzheimer disease 4)

**Description:**

**Omim ID:** [600759](#), [606889](#)

**Gene Ontology:** [Hyperlink](#)

**Gene Summary:** Alzheimer's disease (AD) patients with an inherited form of the disease carry mutations in the presenilin proteins (PSEN1 or PSEN2) or the amyloid precursor protein (APP). These disease-linked mutations result in increased production of the longer form of amyloid-beta (main component of amyloid deposits found in AD brains). Presenilins are postulated to regulate APP processing through their effects on gamma-secretase, an enzyme that cleaves APP. Also, it is thought that the presenilins are involved in the cleavage of the Notch receptor such that, they either directly regulate gamma-secretase activity, or themselves act as protease enzymes. Two alternatively spliced transcript variants encoding different isoforms of PSEN2 have been identified. [provided by RefSeq]

**Other** Alzheimer's disease 3-like,OTTHUMP00000035671,presenilin 2

**Designations:**

#### **Gene Pathway**

[Alzheimer's disease Notch signaling pathway](#)

#### **Related Disease**

[Alzheimer Disease](#) [Alzheimer disease](#) [Amnesia](#) [Cardiovascular Diseases](#) [Cognition Disorders](#) [Dementia](#) [Diabetes Complications](#) [Diabetes Mellitus, Type 2](#) [Edema](#) [Genetic Predisposition to Disease](#) [Macular Degeneration](#) [Metabolic Syndrome X](#) [Narcolepsy](#) [Neoplasms](#) [Neuropsychological Tests](#) [Osteoporosis](#) [Tourette Syndrome](#)

[服務條款](#) | [隱私權政策](#) | [著作及商標](#) | [網站地圖](#)

©2016 亞諾法生技股份有限公司 Abnova Corporation. 版權所有.