



# SZABO SCANDIC

Part of Europa Biosite

## Produktinformation



Forschungsprodukte & Biochemikalien



Zellkultur & Verbrauchsmaterial



Diagnostik & molekulare Diagnostik



Laborgeräte & Service

Weitere Information auf den folgenden Seiten!  
See the following pages for more information!



### Lieferung & Zahlungsart

siehe unsere [Liefer- und Versandbedingungen](#)

### Zuschläge

- Mindermengenzuschlag
- Trockeneiszuschlag
- Gefahrgutzuschlag
- Expressversand

### SZABO-SCANDIC HandelsgmbH

Quellenstraße 110, A-1100 Wien

T. +43(0)1 489 3961-0

F. +43(0)1 489 3961-7

[mail@szabo-scandic.com](mailto:mail@szabo-scandic.com)

[www.szabo-scandic.com](http://www.szabo-scandic.com)

[linkedin.com/company/szaboscandic](https://www.linkedin.com/company/szaboscandic) 

**PSG1 purified MaxPab mouse polyclonal antibody (B02P)** MaxPab®

Catalog # : H00005669-B02P

規格 : [ 50 ug ]

[List All](#)

**Specification**

**Product Description:** Mouse polyclonal antibody raised against a full-length human PSG1 protein.

**Immunogen:** PSG1 (NP\_008836.2, 1 a.a. ~ 426 a.a) full-length human protein.

**Sequence:**  
 MGTLSAPPCTQRIKWKGLLLTASLLNFWNLPTTAQVTIEAeptKVSEgK  
 DVLLLvhnlPQnLTGYIWYKGMrdLYHYITSYVVDGEIIYGpaysGREt  
 AYSNASLLIQNVTREDAGSYTLHIIKGGDDGTRGVTGRFTFTLHLETpkPSI  
 SSSNLNPREtMEAVSLtCDPETPDAsYLWwMNGQSLpMTHSLKLSEtN  
 RTLFLLGVTKYTAGPYECEIRNPVSASrSDPvTLNLLPKLPkPYITInNLNP  
 RENKdVLNFTCEPKSENYTYMwWLNqQSLpVSPrvKRPIENRILIPSVTR  
 NETGPYQCEIRDRYGGIRSDPvTLNMLYgPDLpRIYPSFTYyRSGEVLYL  
 SCSADSNPPAQYSWTINEKFQLPGQKLFIRHITTKHSGLYVCSVRNSATG  
 KESSKSMtVEVSGKWIPASLAIGF

**Host:** Mouse

**Reactivity:** Human

**Quality Control Testing:** Antibody reactive against mammalian transfected lysate.

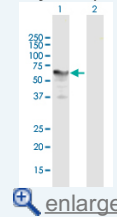
**Storage Buffer:** In 1x PBS, pH 7.4

**Storage Instruction:** Store at -20°C or lower. Aliquot to avoid repeated freezing and thawing.

**Datasheet:**  [Download](#)

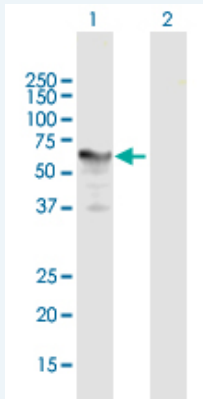
**Application Image**

Western Blot (Transfected lysate)



**Applications**


**Western Blot (Transfected lysate)**



Western Blot analysis of PSG1 expression in transfected 293T cell line (H00005669-T02) by PSG1 MaxPab polyclonal antibody.

Lane 1: PSG1 transfected lysate(46.86 KDa).

Lane 2: Non-transfected lysate.

 [Protocol Download](#)

## Gene Information

---

**Entrez GeneID:** [5669](#)

---

**GeneBank  
Accession#:** [NM\\_006905.2](#)

---

**Protein  
Accession#:** [NP\\_008836.2](#)

---

**Gene Name:** PSG1

---

**Gene Alias:** B1G1,CD66f,DHFRP2,FLJ90598,FLJ90654,PBG1,PSBG1,PSGGA,PSGIA,SP1

---

**Gene  
Description:** pregnancy specific beta-1-glycoprotein 1

---

**Omim ID:** [176390](#)

---

**Gene Ontology:** [Hyperlink](#)

---

**Other  
Designations:** pregnancy-specific B-1 glycoprotein

---

---

[服務條款](#) | [隱私權政策](#) | [著作及商標](#) | [網站地圖](#)

©2016 亞諾法生技股份有限公司 Abnova Corporation. 版權所有.