



# SZABO SCANDIC

Part of Europa Biosite

## Produktinformation



Forschungsprodukte & Biochemikalien



Zellkultur & Verbrauchsmaterial



Diagnostik & molekulare Diagnostik



Laborgeräte & Service

Weitere Information auf den folgenden Seiten!  
See the following pages for more information!



### Lieferung & Zahlungsart

siehe unsere [Liefer- und Versandbedingungen](#)

### Zuschläge

- Mindermengenzuschlag
- Trockeneiszuschlag
- Gefahrgutzuschlag
- Expressversand

### SZABO-SCANDIC HandelsgmbH

Quellenstraße 110, A-1100 Wien

T. +43(0)1 489 3961-0

F. +43(0)1 489 3961-7

[mail@szabo-scandic.com](mailto:mail@szabo-scandic.com)

[www.szabo-scandic.com](http://www.szabo-scandic.com)

[linkedin.com/company/szaboscandic](https://www.linkedin.com/company/szaboscandic) 

## PSG2 MaxPab mouse polyclonal antibody (B01) MaxPab®

Catalog # : H00005670-B01

規格 : [ 50 uL ]

[List All](#)

### Specification

**Product Description:** Mouse polyclonal antibody raised against a full-length human PSG2 protein.

**Immunogen:** PSG2 (AAH22316.1, 1 a.a. ~ 335 a.a) full-length human protein.

**Sequence:**  
 MGPLSAPPCTEHIKWKGLLLTASLLNFWNLPTTAQVTIEAQPPKVSEGKD  
 VLLL VHNL PQNL TGYWYKQIRDLYHYITSYVVDGQIIIGPAYSGRETAY  
 SNASLLIQNVTRDAGSYTLHIIKRGDGTGVTGYFTFTLYLETPKPSISS  
 SNLNPREAMETVILTCDPETPDTSYQWWWNGQSLPMTHRFQLSETNRT  
 LFLFGVTKYTAGPYECEIRNSGSASRSDPVTLLNLLHGPDLPRIHPSYTN  
 RSGDNL YLSCFANSNPPAQYSWTINGKFQQSGQNL FIPQITTKHSGLYVC  
 SVRNSATGEESSTSLTVKVSASTRIGLLPLLNT

**Host:** Mouse

**Reactivity:** Human

**Quality Control Testing:** Antibody reactive against mammalian transfected lysate.

**Storage Buffer:** No additive

**Storage Instruction:** Store at -20°C or lower. Aliquot to avoid repeated freezing and thawing.

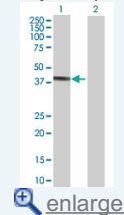
**Note:** For IHC and IF applications, antibody purification with Protein A will be needed prior to use.

**MSDS:**  [Download](#)

**Datasheet:**  [Download](#)

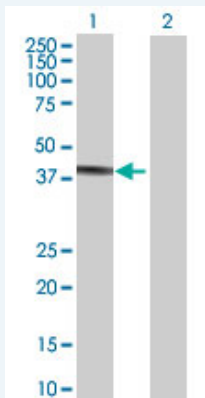
### Application Image

Western Blot (Transfected lysate)



### Applications

#### Western Blot (Transfected lysate)



Western Blot analysis of PSG2 expression in transfected 293T cell line (H00005670-T01) by PSG2 MaxPab polyclonal antibody.

Lane 1: PSG2 transfected lysate(36.85 KDa).

Lane 2: Non-transfected lysate.

## Gene Information

---

**Entrez GeneID:** [5670](#)

---

**GeneBank  
Accession#:** [BC022316.1](#)

---

**Protein  
Accession#:** [AAH22316.1](#)

---

**Gene Name:** PSG2

---

**Gene Alias:** CEA,PSBG2,PSG1,PSGGB

---

**Gene  
Description:** pregnancy specific beta-1-glycoprotein 2

---

**Omim ID:** [176391](#)

---

**Gene Ontology:** [Hyperlink](#)

---

**Other  
Designations:** Pregnancy-specific beta-1-glycoprotein-2,carcinoembryonic antigen  
SG8,pregnancy-specific beta-1 glycoprotein,pregnancy-specific beta-1-  
glycoprotein 7

---