



SZABO SCANDIC

Part of Europa Biosite

Produktinformation



Forschungsprodukte & Biochemikalien



Zellkultur & Verbrauchsmaterial



Diagnostik & molekulare Diagnostik



Laborgeräte & Service

Weitere Information auf den folgenden Seiten!
See the following pages for more information!



Lieferung & Zahlungsart

siehe unsere [Liefer- und Versandbedingungen](#)

Zuschläge

- Mindermengenzuschlag
- Trockeneiszuschlag
- Gefahrgutzuschlag
- Expressversand

SZABO-SCANDIC HandelsgmbH

Quellenstraße 110, A-1100 Wien

T. +43(0)1 489 3961-0

F. +43(0)1 489 3961-7

mail@szabo-scandic.com

www.szabo-scandic.com

[linkedin.com/company/szaboscandic](https://www.linkedin.com/company/szaboscandic) 



PSG2 purified MaxPab mouse polyclonal antibody (B01P) MaxPab®

Catalog # : H00005670-B01P

規格 : [50 ug]

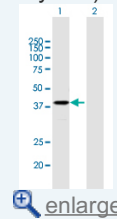
[List All](#)


Specification

Product Description:	Mouse polyclonal antibody raised against a full-length human PSG2 protein.
Immunogen:	PSG2 (AAH22316.1, 1 a.a. ~ 335 a.a) full-length human protein.
Sequence:	MGPLSAPPCTEHIKWKGLLLTASLLNFWNLPTTAQVTIEAQPPKVSEGKD VLLLVHNLQPQLTGYIWYKQIRDLYHYITSYVVDGQIIYGPAYSGRETAY SNASLLIQNVTRDAGSYTLHIIKRGDGTGRVGTGYFTFTLYLETPKPSISS SNLNPREAMETVILTCDPETPDTSYQWWWNGQSLPMTHRFQLSETNRT LFLFGVTKYTAGPYECEIRNSGSASRSDPVTLLNLLHGPDLPRIHPSYTN RSGDNLVLSCFANSNPPAQYSWTINGKFQQSGQNLFIPIQITTKHSGLYVC SVRNSATGEESSTSLTVKVSASTRIGLLPLLNT
Host:	Mouse
Reactivity:	Human
Quality Control Testing:	Antibody reactive against mammalian transfected lysate.
Storage Buffer:	In 1x PBS, pH 7.4
Storage Instruction:	Store at -20°C or lower. Aliquot to avoid repeated freezing and thawing.
MSDS:	 Download
Datasheet:	 Download

Application Image

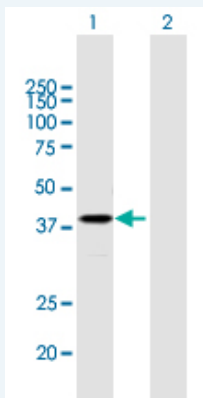
Western Blot (Transfected lysate)



 [enlarge](#)

Applications


Western Blot (Transfected lysate)



Western Blot analysis of PSG2 expression in transfected 293T cell line (H00005670-T01) by PSG2 MaxPab polyclonal antibody.

Lane 1: PSG2 transfected lysate(36.85 KDa).

Lane 2: Non-transfected lysate.

 [Protocol Download](#)

Gene Information

Entrez GeneID: [5670](#)

**GeneBank
Accession#:** [BC022316.1](#)

**Protein
Accession#:** [AAH22316.1](#)

Gene Name: PSG2

Gene Alias: CEA,PSBG2,PSG1,PSGGB

**Gene
Description:** pregnancy specific beta-1-glycoprotein 2

Omim ID: [176391](#)

Gene Ontology: [Hyperlink](#)

**Other
Designations:** Pregnancy-specific beta-1-glycoprotein-2,carcinoembryonic antigen
SG8, pregnancy-specific beta-1 glycoprotein, pregnancy-specific beta-1-
glycoprotein 7

[服務條款](#) | [隱私權政策](#) | [著作及商標](#) | [網站地圖](#)

©2016 亞諾法生技股份有限公司 Abnova Corporation. 版權所有.