



SZABO SCANDIC

Part of Europa Biosite

Produktinformation



Forschungsprodukte & Biochemikalien



Zellkultur & Verbrauchsmaterial



Diagnostik & molekulare Diagnostik



Laborgeräte & Service

Weitere Information auf den folgenden Seiten!
See the following pages for more information!



Lieferung & Zahlungsart

siehe unsere [Liefer- und Versandbedingungen](#)

Zuschläge

- Mindermengenzuschlag
- Trockeneiszuschlag
- Gefahrgutzuschlag
- Expressversand

SZABO-SCANDIC HandelsgmbH

Quellenstraße 110, A-1100 Wien

T. +43(0)1 489 3961-0

F. +43(0)1 489 3961-7

mail@szabo-scandic.com

www.szabo-scandic.com

[linkedin.com/company/szaboscandic](https://www.linkedin.com/company/szaboscandic) 

PSG3 purified MaxPab mouse polyclonal antibody (B01P) MaxPab®

Catalog # : H00005671-B01P

規格 : [50 ug]

[List All](#)

Specification

Product Description: Mouse polyclonal antibody raised against a full-length human PSG3 protein.

Immunogen: PSG3 (AAH05924.2, 1 a.a. ~ 428 a.a) full-length human protein.

Sequence:
 MGPLSAPPCTQRITWKGLLLTALLLNFWNLPTTAQVTIEAEPKVKSGKD
 VLLLVHNLQPQLAGYIWYKGMKDLHYHITSYVVDGQIIYGPAYSGRETV
 YSNALLIQNVTREDAGSYTLHIVKRGDGTGETGHFTFTLYLETPKPSIS
 SSNLYPREDMEAVSLTCDPETPDASYLWWMNGQSLPMT HSLQLSKNKR
 TLFVGFVTKYTAGPYECEIRNPVSASRSDPVTLNLLPKLPKPYITINLNPR
 ENKDVLAFTCEPKSENYTYWWLNGQSLPVS PRVKRPIENRILIPSVTRN
 ETGPYQCEIQDRYGGIRSYPTLVNLYGPDLPRIYPSFTYYHSGENLYLS
 CFADSNPPAEYSWTINGKFQLSGQKLFIPQITTKHSGLYACSVRNSATGM
 ESSKSMTVEVSAPSGTGHLPLGNPL

Host: Mouse

Reactivity: Human

Quality Control Testing: Antibody reactive against mammalian transfected lysate.

Storage Buffer: In 1x PBS, pH 7.4

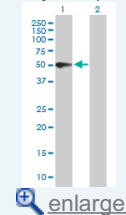
Storage Instruction: Store at -20°C or lower. Aliquot to avoid repeated freezing and thawing.


MSDS:  [Download](#)

Datasheet:  [Download](#)

Application Image

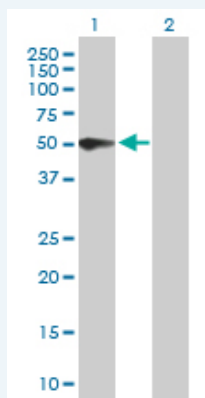
Western Blot (Transfected lysate)



 [enlarge](#)

Applications

Western Blot (Transfected lysate)



Western Blot analysis of PSG3 expression in transfected 293T cell line (H00005671-T02) by PSG3 MaxPab polyclonal antibody.

Lane 1: PSG3 transfected lysate(47.08 KDa).

Lane 2: Non-transfected lysate.

Gene Information

Entrez GeneID: [5671](#)

**GeneBank
Accession#:** [BC005924](#)

**Protein
Accession#:** [AAH05924.2](#)

Gene Name: PSG3

Gene Alias: -

**Gene
Description:** pregnancy specific beta-1-glycoprotein 3

Omim ID: [176392](#)

Gene Ontology: [Hyperlink](#)

**Other
Designations:** -
