



SZABO SCANDIC

Part of Europa Biosite

Produktinformation



Forschungsprodukte & Biochemikalien



Zellkultur & Verbrauchsmaterial



Diagnostik & molekulare Diagnostik



Laborgeräte & Service

Weitere Information auf den folgenden Seiten!
See the following pages for more information!



Lieferung & Zahlungsart

siehe unsere [Liefer- und Versandbedingungen](#)

Zuschläge

- Mindermengenzuschlag
- Trockeneiszuschlag
- Gefahrgutzuschlag
- Expressversand

SZABO-SCANDIC HandelsgmbH

Quellenstraße 110, A-1100 Wien

T. +43(0)1 489 3961-0

F. +43(0)1 489 3961-7

mail@szabo-scandic.com

www.szabo-scandic.com

[linkedin.com/company/szaboscandic](https://www.linkedin.com/company/szaboscandic) 

PSG6 MaxPab mouse polyclonal antibody (B01) MaxPab®

Catalog # : H00005675-B01

規格 : [50 uL]

[List All](#)

Specification

Product Description: Mouse polyclonal antibody raised against a full-length human PSG6 protein.

Immunogen: PSG6 (NP_001027020, 1 a.a. ~ 424 a.a) full-length human protein.

Sequence:
 MGPLSAPPCTQHITWKGLLLTASLLNFWNLPTTAQVIEAKPPKVSEGKD
 VLLL VHNL PQNLTGYIWYKGQMTDLYHYITSYVWHGQIYGPAYSGRET
 VY SNASLLIQNVTQEDAGSYTLHIIKRGDGTGGVTGYFTVTLYSETPKPSISS
 SNLNPREVMEAVRLICDPETPDASYLWLLNGQNLPMTHRLQLSKTNRTL
 YLFGVTKYIAGPYECEIRNPVSASRSDPVTLNLLPKLPMPYITINLNPREK
 KDVLAFTECPKSRNYTIMWWLNGQSLPVSPRVKRPIENRILIPSVTRNET
 GPYQCEIRDYGGIRSNPVTLMVLYGPDLPRIYPSFTYYRSGENLDLSCF
 ADSNPPAEYSWTINGKFLSGQKLFIPQITTNHSGLYACSVRNSATGKEIS
 KSMIVKVSGPCHGNQTESH

Host: Mouse

Reactivity: Human

Quality Control Testing: Antibody reactive against mammalian transfected lysate.

Storage Buffer: No additive

Storage Instruction: Store at -20°C or lower. Aliquot to avoid repeated freezing and thawing.

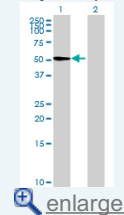
Note: For IHC and IF applications, antibody purification with Protein A will be needed prior to use.

MSDS: [Download](#)

Datasheet: [Download](#)

Application Image

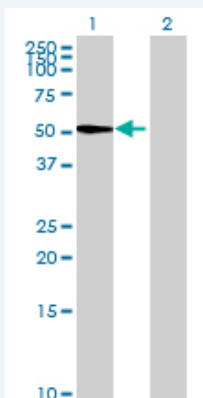
Western Blot (Transfected lysate)



[enlarge](#)

Applications

Western Blot (Transfected lysate)



Western Blot analysis of PSG6 expression in transfected 293T cell line (H00005675-T01) by PSG6 MaxPab polyclonal antibody.

Lane 1: PSG6 transfected lysate(46.64 KDa).
Lane 2: Non-transfected lysate.

 [Protocol Download](#)

Gene Information

Entrez GeneID: [5675](#)

**GeneBank
Accession#:** [NM_001031850](#)

**Protein
Accession#:** [NP_001027020](#)

Gene Name: PSG6

Gene Alias: PSG10

**Gene
Description:** pregnancy specific beta-1-glycoprotein 6

Omim ID: [176395](#)

Gene Ontology: [Hyperlink](#)

**Other
Designations:** -

[服務條款](#) | [隱私權政策](#) | [著作及商標](#) | [網站地圖](#)

©2016 亞諾法生技股份有限公司 Abnova Corporation. 版權所有.