



# SZABO SCANDIC

Part of Europa Biosite

## Produktinformation



Forschungsprodukte & Biochemikalien



Zellkultur & Verbrauchsmaterial



Diagnostik & molekulare Diagnostik



Laborgeräte & Service

Weitere Information auf den folgenden Seiten!  
See the following pages for more information!



### Lieferung & Zahlungsart

siehe unsere [Liefer- und Versandbedingungen](#)

### Zuschläge

- Mindermengenzuschlag
- Trockeneiszuschlag
- Gefahrgutzuschlag
- Expressversand

### SZABO-SCANDIC HandelsgmbH

Quellenstraße 110, A-1100 Wien

T. +43(0)1 489 3961-0

F. +43(0)1 489 3961-7

[mail@szabo-scandic.com](mailto:mail@szabo-scandic.com)

[www.szabo-scandic.com](http://www.szabo-scandic.com)

[linkedin.com/company/szaboscandic](https://www.linkedin.com/company/szaboscandic) 

## PSMA1 monoclonal antibody (M01), clone 1D9-1C7

Catalog # : H00005682-M01

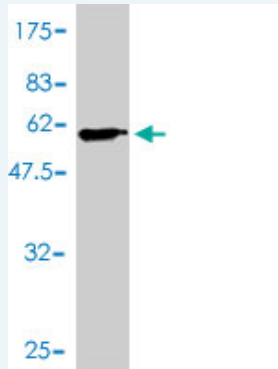
規格 : [ 100 ug ]

[List All](#)

### Specification

<b>Product Description:</b>	Mouse monoclonal antibody raised against a full length recombinant PSMA1.
<b>Immunogen:</b>	PSMA1 (AAH02577, 1 a.a. ~ 263 a.a) full-length recombinant protein with GST tag. MW of the GST tag alone is 26 KDa.
<b>Sequence:</b>	MFRNQYDNDVTWSPQGRIHQIEYAMEAVKQGSATVGLKSKTHAVLVAL KRAQSELAHQKKILHVDNHIGISAGLTADARLLCNFMRQECLDSRFVFD RPLPVSRLVSLIGSKTIPTQRYGRRPYGVLLIAGYDDMGPHIFQTCPS ANYFDCRAMSIGARSQSARTYLERHMSEFMECNLNELVKHGLRALRETL PAEQDLTTKNVSIGVGDLEFTIYDDDDVSPFLEGLEERPQRKAQPAQP ADEPAEKADPEMEH
<b>Host:</b>	Mouse
<b>Reactivity:</b>	Human
<b>Isotype:</b>	IgG1 kappa

**Quality Control Testing:** Antibody Reactive Against Recombinant Protein.



Western Blot detection against Immunogen (54.67 KDa) .

**Storage Buffer:** In 1x PBS, pH 7.4

**Storage Instruction:** Store at -20°C or lower. Aliquot to avoid repeated freezing and thawing.

**MSDS:** [Download](#)

**Datasheet:** [Download](#)

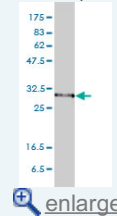
### Publication Reference

1. [The Role of Translationally Controlled Tumor Protein in Tumor Growth and Metastasis of Colon Adenocarcinoma Cells.](#)  
Ma Q, Geng Y, Xu W, Wu Y, He F, Shu W, Huang M, Du H, Li M. J Proteome Res. 2009 Aug 11. [Epub ahead of print]

### Applications

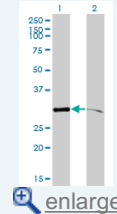
### Application Image

Western Blot (Cell lysate)



[enlarge](#)

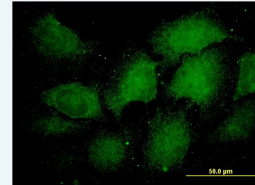
Western Blot (Transfected lysate)



[enlarge](#)

Western Blot (Recombinant protein)

Immunofluorescence

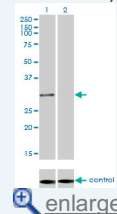


[enlarge](#)

Sandwich ELISA (Recombinant protein)

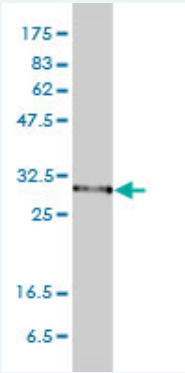
ELISA

RNAi Knockdown (Antibody validated)




[enlarge](#)

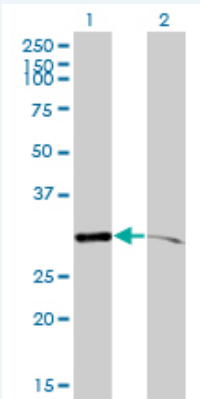
### Western Blot (Cell lysate)



PSMA1 monoclonal antibody (M01), clone 1D9-1C7 Western Blot analysis of PSMA1 expression in HeLa ( Cat # L013V1 ).

 [Protocol Download](#)

### Western Blot (Transfected lysate)



Western Blot analysis of PSMA1 expression in transfected 293T cell line by PSMA1 monoclonal antibody (M01), clone 1D9-1C7.

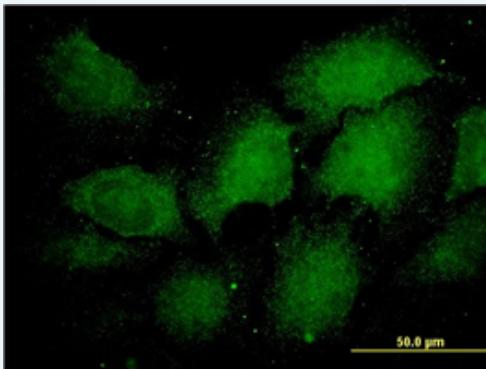
Lane 1: PSMA1 transfected lysate(30.2 KDa).  
Lane 2: Non-transfected lysate.


 [Protocol Download](#)

### Western Blot (Recombinant protein)

 [Protocol Download](#)

### Immunofluorescence



 [enlarge this image](#)

Immunofluorescence of monoclonal antibody to PSMA1 on HeLa cell. [antibody concentration 60 ug/ml]

 [Protocol Download](#)

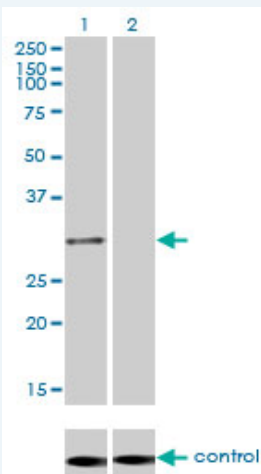
### Sandwich ELISA (Recombinant protein)

Detection limit for recombinant GST tagged PSMA1 is approximately 3ng/ml as a capture antibody.


 [Protocol Download](#)

### ELISA

### RNAi Knockdown (Antibody validated)



Western blot analysis of PSMA1 over-expressed 293 cell line, cotransfected with PSMA1 Validated Chimera RNAi ( Cat # H00005682-R01V ) (Lane 2) or non-transfected control (Lane 1). Blot probed with PSMA1 monoclonal antibody (M01), clone 1D9-1C7 (Cat # H00005682-M01 ). GAPDH ( 36.1 kDa ) used as specificity and loading control.

 [Protocol Download](#)

## Gene Information

**Entrez GeneID:** [5682](#)

**GeneBank** [BC002577](#)

**Accession#:**

**Protein** [AAH02577](#)

**Accession#:**

**Gene Name:** PSMA1

**Gene Alias:** HC2,MGC14542,MGC14575,MGC14751,MGC1667,MGC21459,MGC22853,MGC23915,NU,PROS30

**Gene Description:** proteasome (prosome, macropain) subunit, alpha type, 1

**Omim ID:** [602854](#)

**Gene Ontology:** [Hyperlink](#)

**Gene Summary:** The proteasome is a multicatalytic proteinase complex with a highly ordered ring-shaped 20S core structure. The core structure is composed of 4 rings of 28 non-identical subunits; 2 rings are composed of 7 alpha subunits and 2 rings are composed of 7 beta subunits. Proteasomes are distributed throughout eukaryotic cells at a high concentration and cleave peptides in an ATP/ubiquitin-dependent process in a non-lysosomal pathway. An essential function of a modified proteasome, the immunoproteasome, is the processing of class I MHC peptides. This gene encodes a member of the peptidase T1A family, that is a 20S core alpha subunit. Alternative splicing results in multiple transcript variants encoding distinct isoforms

**Other Designations:** 30 kDa prosomal protein,macropain subunit nu,multicatalytic endopeptidase complex subunit C2,proteasome alpha 1 subunit,proteasome component C2,proteasome nu chain,proteasome subunit nu,proteasome subunit, alpha-type, 1,protein P30-33K

## Gene Pathway

[Proteasome](#)

