



SZABO SCANDIC

Part of Europa Biosite

Produktinformation



Forschungsprodukte & Biochemikalien



Zellkultur & Verbrauchsmaterial



Diagnostik & molekulare Diagnostik



Laborgeräte & Service

Weitere Information auf den folgenden Seiten!
See the following pages for more information!



Lieferung & Zahlungsart

siehe unsere [Liefer- und Versandbedingungen](#)

Zuschläge

- Mindermengenzuschlag
- Trockeneiszuschlag
- Gefahrgutzuschlag
- Expressversand

SZABO-SCANDIC HandelsgmbH

Quellenstraße 110, A-1100 Wien

T. +43(0)1 489 3961-0

F. +43(0)1 489 3961-7

mail@szabo-scandic.com

www.szabo-scandic.com

[linkedin.com/company/szaboscandic](https://www.linkedin.com/company/szaboscandic) 

PSMA1 monoclonal antibody (M02), clone 3F12-2C9

Catalog # : H00005682-M02

規格 : [100 ug]

[List All](#)

Specification

Product Description: Mouse monoclonal antibody raised against a full-length recombinant PSMA1.

Immunogen: PSMA1 (AAH02577, 1 a.a. ~ 263 a.a) full-length recombinant protein with GST tag. MW of the GST tag alone is 26 KDa.

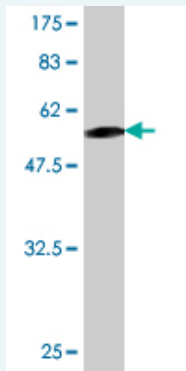
Sequence:
 MFRNQYDNDVTWSPQGRIHQIEYAMEAVKQGSATVGLKSKTHAVLVAL
 KRAQSELAHQKKILHVDNHIGISIAGLTADARLLCNFMRQECLDSRFVFD
 RPLPVSRLVSLIGSKTIPTQRYGRRPYGVGLLIAGYDDMGPHIFQTCPS
 ANYFDCRAMSIGARSQSARTYLERHMSEFMECNLNLVKHGLRALRETL
 PAEQDLTTKNVSIGVKGDLFTIYDDDDVSPFLEGLEERPQRKAQPAQP
 ADEPAEKADPEMEH

Host: Mouse

Reactivity: Human

Isotype: IgG1 Kappa

Quality Control Testing: Antibody Reactive Against Recombinant Protein.



Western Blot detection against Immunogen (54.67 KDa) .

Storage Buffer: In 1x PBS, pH 7.4

Storage Instruction: Store at -20°C or lower. Aliquot to avoid repeated freezing and thawing.

MSDS: [Download](#)

Datasheet: [Download](#)

Applications

Western Blot (Recombinant protein)

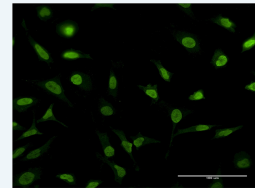
[Protocol Download](#)

Immunofluorescence

Application Image

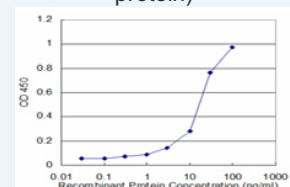
Western Blot (Recombinant protein)

Immunofluorescence



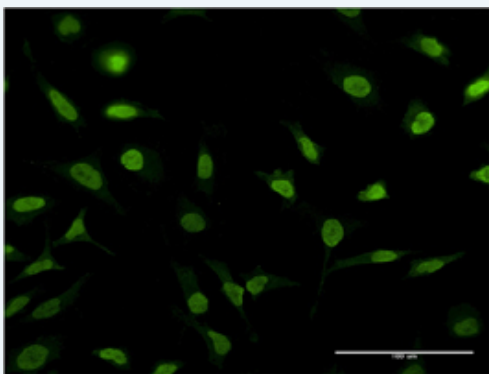
[enlarge](#)

Sandwich ELISA (Recombinant protein)



[enlarge](#)

ELISA

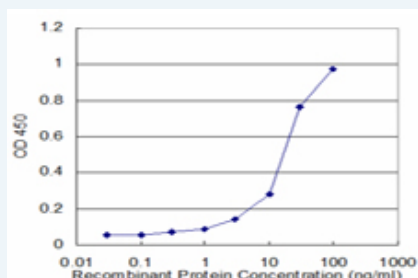


[enlarge this image](#)

Immunofluorescence of monoclonal antibody to PSMA1 on HeLa cell . [antibody concentration 10 ug/ml]

[Protocol Download](#)

Sandwich ELISA (Recombinant protein)



Detection limit for recombinant GST tagged PSMA1 is approximately 3ng/ml as a capture antibody.

[Protocol Download](#)

ELISA

Gene Information

Entrez GeneID: [5682](#)

GeneBank Accession#: [BC002577](#)

Protein Accession#: [AAH02577](#)

Gene Name: PSMA1

Gene Alias: HC2,MGC14542,MGC14575,MGC14751,MGC1667,MGC21459,MGC22853,MGC23915,NU,PROS30

Gene Description: proteasome (prosome, macropain) subunit, alpha type, 1

Omim ID: [602854](#)

Gene Ontology: [Hyperlink](#)

Gene Summary: The proteasome is a multicatalytic proteinase complex with a highly ordered ring-shaped 20S core structure. The core structure is composed of 4 rings of 28 non-identical subunits; 2 rings are composed of 7 alpha subunits and 2 rings are composed of 7 beta subunits. Proteasomes are distributed throughout eukaryotic cells at a high concentration and cleave peptides in an ATP/ubiquitin-dependent process in a non-lysosomal pathway. An essential function of a modified proteasome, the immunoproteasome, is the processing of class I MHC peptides. This gene encodes a member of the peptidase T1A family, that is a 20S core alpha subunit. Alternative splicing results in multiple transcript variants encoding distinct isoforms

Other 30 kDa prosomal protein,macropain subunit nu,multicatalytic
Designations: endopeptidase complex subunit C2,proteasome alpha 1
subunit,proteasome component C2,proteasome nu chain,proteasome
subunit nu,proteasome subunit, alpha-type, 1,protein P30-33K

Gene Pathway

Proteasome

[服務條款](#) | [隱私權政策](#) | [著作及商標](#) | [網站地圖](#)

©2016 亞諾法生技股份有限公司 Abnova Corporation. 版權所有.