



SZABO SCANDIC

Part of Europa Biosite

Produktinformation



Forschungsprodukte & Biochemikalien



Zellkultur & Verbrauchsmaterial



Diagnostik & molekulare Diagnostik



Laborgeräte & Service

Weitere Information auf den folgenden Seiten!
See the following pages for more information!



Lieferung & Zahlungsart

siehe unsere [Liefer- und Versandbedingungen](#)

Zuschläge

- Mindermengenzuschlag
- Trockeneiszuschlag
- Gefahrgutzuschlag
- Expressversand

SZABO-SCANDIC HandelsgmbH

Quellenstraße 110, A-1100 Wien

T. +43(0)1 489 3961-0

F. +43(0)1 489 3961-7

mail@szabo-scandic.com

www.szabo-scandic.com

[linkedin.com/company/szaboscandic](https://www.linkedin.com/company/szaboscandic) 



PSMA6 purified MaxPab mouse polyclonal antibody (B01P) MaxPab®

Catalog # : H00005687-B01P

規格 : [50 ug]

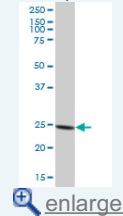
[List All](#)

Specification

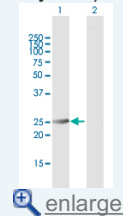
Product Description:	Mouse polyclonal antibody raised against a full-length human PSMA6 protein.
Immunogen:	PSMA6 (NP_002782.1, 1 a.a. ~ 246 a.a) full-length human protein.
Sequence:	MSRGSSAGFDRHITIFSPEGRLYQVEYAFKAINQGGLTSVAVRGKDCAVI VTQKKVPDKLLDSSTVTHLFKITENIGCVMTGMTADSRSQVQRARYEAA NWKYKYGYEIPVDMLCKRIADISQVYTQNAEMRPLGCCMILIGIDEEQGPQ VYKCDPAGYYCGFKATAAGVKQTESTSFLEKKVKKKFDWTFEQTVETAI TCLSTVLSIDFKPSEIEVGWVTVENPKFRILTEAEIDAHLVALAERD
Host:	Mouse
Reactivity:	Human
Quality Control Testing:	Antibody reactive against mammalian transfected lysate.
Storage Buffer:	In 1x PBS, pH 7.4
Storage Instruction:	Store at -20°C or lower. Aliquot to avoid repeated freezing and thawing.
MSDS:	 Download
Datasheet:	 Download

Application Image

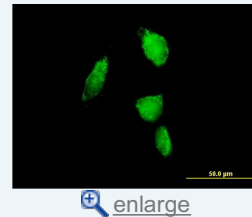
Western Blot (Tissue lysate)



Western Blot (Transfected lysate)

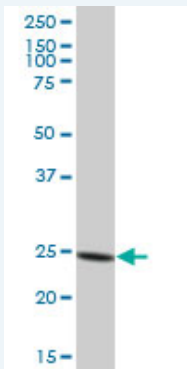


Immunofluorescence




Applications

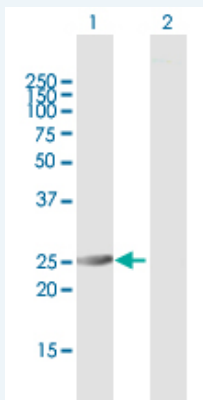
Western Blot (Tissue lysate)



PSMA6 MaxPab polyclonal antibody. Western Blot analysis of PSMA6 expression in human liver.

 [Protocol Download](#)

Western Blot (Transfected lysate)

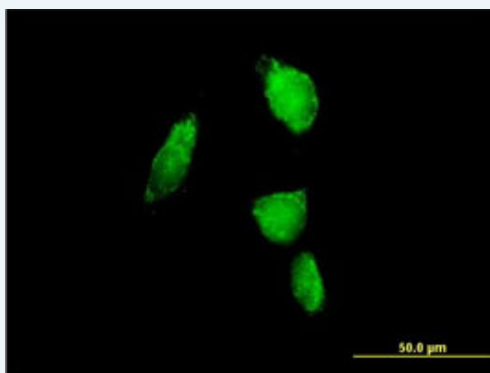


Western Blot analysis of PSMA6 expression in transfected 293T cell line ([H00005687-T01](#)) by PSMA6 MaxPab polyclonal antibody.

Lane 1: PSMA6 transfected lysate(27.06 KDa).
Lane 2: Non-transfected lysate.

[Protocol Download](#)

Immunofluorescence



[enlarge this image](#)

Immunofluorescence of [purified](#) MaxPab antibody to PSMA6 on HeLa cell. [antibody concentration 10 ug/ml]

[Protocol Download](#)

Gene Information

Entrez GeneID: [5687](#)

GeneBank [NM_002791.1](#)
Accession#:

Protein [NP_002782.1](#)
Accession#:

Gene Name: PSMA6

Gene Alias: IOTA,MGC22756,MGC2333,MGC23846,PROS27,p27K

Gene Description: proteasome (prosome, macropain) subunit, alpha type, 6

Omim ID: [602855](#)

Gene Ontology: [Hyperlink](#)

Gene Summary: The proteasome is a multicatalytic proteinase complex with a highly ordered ring-shaped 20S core structure. The core structure is composed of 4 rings of 28 non-identical subunits; 2 rings are composed of 7 alpha subunits and 2 rings are composed of 7 beta subunits. Proteasomes are distributed throughout eukaryotic cells at a high concentration and cleave peptides in an ATP/ubiquitin-dependent process in a non-lysosomal pathway. An essential function of a modified proteasome, the immunoproteasome, is the processing of class I MHC

peptides. This gene encodes a member of the peptidase T1A family, that is a 20S core alpha subunit. A pseudogene has been identified on the Y chromosome. [provided by RefSeq]

Other Designations: 27 kDa prosomal protein,OTTHUMP00000178843,macropain iota chain,macropain subunit iota,multicatalytic endopeptidase complex iota chain,prosomal P27K protein,proteasome alpha 6 subunit,proteasome iota chain,proteasome subunit iota

Gene Pathway

[Proteasome](#)

Related Disease

[Angina](#), [Unstable Arthritis](#), [Juvenile Rheumatoid Arthritis](#), [Psoriatic Atherosclerosis](#), [Atherosclerosis](#), [Brain Ischemia](#), [Cardiovascular Diseases](#), [Coronary Artery Disease](#), [Coronary Disease](#), [Coronary Stenosis](#), [Diabetes Mellitus, Type 2](#), [Edema](#), [Genetic Predisposition to Disease](#), [Hypertension](#), [Inflammation](#), [Kidney Failure, Chronic](#), [Metabolic Syndrome X](#), [Multiple Myeloma](#), [Myocardial Infarction](#)

... see more

[服務條款](#) | [隱私權政策](#) | [著作及商標](#) | [網站地圖](#)

©2016 亞諾法生技股份有限公司 Abnova Corporation. 版權所有.