



SZABO SCANDIC

Part of Europa Biosite

Produktinformation



Forschungsprodukte & Biochemikalien



Zellkultur & Verbrauchsmaterial



Diagnostik & molekulare Diagnostik



Laborgeräte & Service

Weitere Information auf den folgenden Seiten!
See the following pages for more information!



Lieferung & Zahlungsart

siehe unsere [Liefer- und Versandbedingungen](#)

Zuschläge

- Mindermengenzuschlag
- Trockeneiszuschlag
- Gefahrgutzuschlag
- Expressversand

SZABO-SCANDIC HandelsgmbH

Quellenstraße 110, A-1100 Wien

T. +43(0)1 489 3961-0

F. +43(0)1 489 3961-7

mail@szabo-scandic.com

www.szabo-scandic.com

[linkedin.com/company/szaboscandic](https://www.linkedin.com/company/szaboscandic) 

PSMA6 293T Cell Transient Overexpression Lysate(Denatured)

Catalog # : H00005687-T01

規格 : [100 uL]

[List All](#)

Specification

Transfected Cell Line: 293T

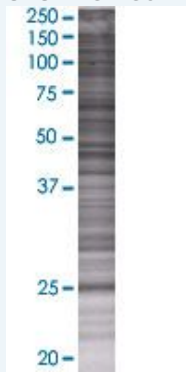
Plasmid: pCMV-PSMA6 full-length

Host: Human

Theoretical MW (kDa): 27.17

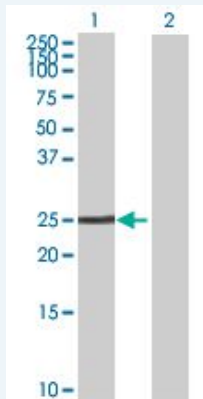
Quality Control Testing: Transient overexpression cell lysate was tested with Anti-PSMA6 antibody (H00005687-B01) by Western Blots.

SDS-PAGE Gel



PSMA6 transfected lysate.

Western Blot



Lane 1: PSMA6 transfected lysate (27.17 KDa)

Lane 2: Non-transfected lysate.

Storage Buffer: 1X Sample Buffer (50 mM Tris-HCl, 2% SDS, 10% glycerol, 300 mM 2-mercaptoethanol, 0.01% Bromophenol blue)

Storage Instruction: Store at -80°C. Aliquot to avoid repeated freezing and thawing.

MSDS:  [Download](#)

Applications

Western Blot

Gene Information

Entrez GeneID: [5687](#)

GeneBank [NM_002791.1](#)
Accession#:

Protein [NP_002782.1](#)
Accession#:

Gene Name: PSMA6

Gene Alias: IOTA,MGC22756,MGC2333,MGC23846,PROS27,p27K

Gene Description: proteasome (prosome, macropain) subunit, alpha type, 6

Omim ID: [602855](#)

Gene Ontology: [Hyperlink](#)

Gene Summary: The proteasome is a multicatalytic proteinase complex with a highly ordered ring-shaped 20S core structure. The core structure is composed of 4 rings of 28 non-identical subunits; 2 rings are composed of 7 alpha subunits and 2 rings are composed of 7 beta subunits. Proteasomes are distributed throughout eukaryotic cells at a high concentration and cleave peptides in an ATP/ubiquitin-dependent process in a non-lysosomal pathway. An essential function of a modified proteasome, the immunoproteasome, is the processing of class I MHC peptides. This gene encodes a member of the peptidase T1A family, that is a 20S core alpha subunit. A pseudogene has been identified on the Y chromosome. [provided by RefSeq]

Other Designations: 27 kDa prosomal protein,OTTHUMP00000178843,macropain iota chain,macropain subunit iota,multicatalytic endopeptidase complex iota chain,prosomal P27K protein,proteasome alpha 6 subunit,proteasome iota chain,proteasome subunit iota

Gene Pathway

[Proteasome](#)

Related Disease

[Angina](#), [Unstable Arthritis](#), [Juvenile Rheumatoid Arthritis](#), [Psoriatic Atherosclerosis](#), [Atherosclerosis](#), [Brain Ischemia](#), [Cardiovascular Diseases](#), [Coronary Artery Disease](#), [Coronary Disease](#), [Coronary Stenosis](#), [Diabetes Mellitus, Type 2](#), [Edema](#), [Genetic Predisposition to Disease](#), [Hypertension](#), [Inflammation](#), [Kidney Failure](#), [Chronic Metabolic Syndrome X](#), [Multiple Myeloma](#), [Myocardial Infarction](#)

... see more