



SZABO SCANDIC

Part of Europa Biosite

Produktinformation



Forschungsprodukte & Biochemikalien



Zellkultur & Verbrauchsmaterial



Diagnostik & molekulare Diagnostik



Laborgeräte & Service

Weitere Information auf den folgenden Seiten!
See the following pages for more information!



Lieferung & Zahlungsart

siehe unsere [Liefer- und Versandbedingungen](#)

Zuschläge

- Mindermengenzuschlag
- Trockeneiszuschlag
- Gefahrgutzuschlag
- Expressversand

SZABO-SCANDIC HandelsgmbH

Quellenstraße 110, A-1100 Wien

T. +43(0)1 489 3961-0

F. +43(0)1 489 3961-7

mail@szabo-scandic.com

www.szabo-scandic.com

[linkedin.com/company/szaboscandic](https://www.linkedin.com/company/szaboscandic) 

PSMB3 polyclonal antibody (A01)

Catalog # : H00005691-A01

規格 : [50 uL]

[List All](#)

Specification

Product Description: Mouse polyclonal antibody raised against a partial recombinant PSMB3.

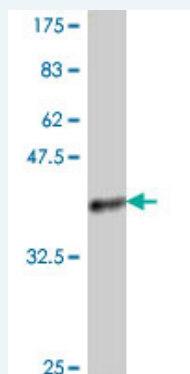
Immunogen: PSMB3 (AAH13008, 106 a.a. ~ 205 a.a) partial recombinant protein with GST tag.

Sequence: EPVIAGLDPKTFKPFICSLDLIGCPMVTDDFVSGTCAEQMYGMCESLW
EPNMDPDHFLFETISQAMLNAVDRDAVSGMGVIVHIEKDKITRTLKARMD

Host: Mouse

Reactivity: Human

Quality Control Testing: Antibody Reactive Against Recombinant Protein.



Western Blot detection against Immunogen (37.11 kDa) .

Storage Buffer: 50 % glycerol

Storage Instruction: Store at -20°C or lower. Aliquot to avoid repeated freezing and thawing.

MSDS: [Download](#)

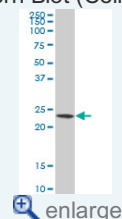
Datasheet: [Download](#)

Applications

Western Blot (Cell lysate)

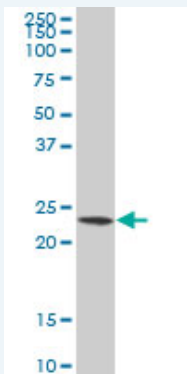
Application Image

Western Blot (Cell lysate)



Western Blot (Recombinant protein)


ELISA



PSMB3 polyclonal antibody (A01), Lot # 051011JC01 Western Blot analysis of PSMB3 expression in HL-60 (Cat # L014V1).

 [Protocol Download](#)

Western Blot (Recombinant protein)

 [Protocol Download](#)

ELISA

Gene Information

Entrez GeneID: [5691](#)

GeneBank Accession#: [BC013008](#)

Protein Accession#: [AAH13008](#)

Gene Name: PSMB3

Gene Alias: HC10-II,MGC4147

Gene Description: proteasome (prosome, macropain) subunit, beta type, 3

Omim ID: [602176](#)

Gene Ontology: [Hyperlink](#)

Gene Summary: The proteasome is a multicatalytic proteinase complex with a highly ordered ring-shaped 20S core structure. The core structure is composed of 4 rings of 28 non-identical subunits; 2 rings are composed of 7 alpha subunits and 2 rings are composed of 7 beta subunits. Proteasomes are distributed throughout eukaryotic cells at a high concentration and cleave peptides in an ATP/ubiquitin-dependent process in a non-lysosomal pathway. An essential function of a modified proteasome, the immunoproteasome, is the processing of class I MHC peptides. This gene encodes a member of the proteasome B-type family, also known as the T1B family, that is a 20S core beta subunit. Pseudogenes have been identified on chromosomes 2 and 12. [provided by RefSeq]

Other Designations: proteasome beta 3 subunit,proteasome chain 13,proteasome component C10-II,proteasome theta chain

Gene Pathway

[Proteasome](#)

