



# SZABO SCANDIC

Part of Europa Biosite

## Produktinformation



Forschungsprodukte & Biochemikalien



Zellkultur & Verbrauchsmaterial



Diagnostik & molekulare Diagnostik



Laborgeräte & Service

Weitere Information auf den folgenden Seiten!  
See the following pages for more information!



### Lieferung & Zahlungsart

siehe unsere [Liefer- und Versandbedingungen](#)

### Zuschläge

- Mindermengenzuschlag
- Trockeneiszuschlag
- Gefahrgutzuschlag
- Expressversand

### SZABO-SCANDIC HandelsgmbH

Quellenstraße 110, A-1100 Wien

T. +43(0)1 489 3961-0

F. +43(0)1 489 3961-7

[mail@szabo-scandic.com](mailto:mail@szabo-scandic.com)

[www.szabo-scandic.com](http://www.szabo-scandic.com)

[linkedin.com/company/szaboscandic](https://www.linkedin.com/company/szaboscandic) 



**PSMB5 purified MaxPab mouse polyclonal antibody (B01P)** MaxPab®

Catalog # : H00005693-B01P

規格 : [ 50 ug ]

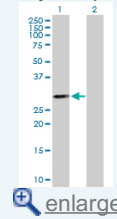
List All

**Specification**

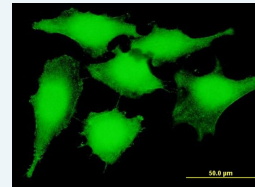
<b>Product Description:</b>	Mouse polyclonal antibody raised against a full-length human PSMB5 protein.
<b>Immunogen:</b>	PSMB5 (AAH57840, 1 a.a. ~ 263 a.a) full-length human protein.
<b>Sequence:</b>	MALASVLERPLPVNQRGFFGLGGRADLLDLGPGSLSDGLSLAAPGWG VPEEPGIEMLHGTTTTLAFKFRHGIVVAADSRATAGAYIASQTVKKVIEINPY LLGTMAGGAADCSFWERLLARQCRIYELRNKERISVAAASKLLANMVYQ YKGMGLSMGTMICGWDKRGPGLYYVDSEGNRISGATFSVSGSVYAY GVMDRGYSYDLEVEQAYDLARRAIQATYRDAYS GGAVNLYHVREDGW IRVSSDNVADLHEKYS GSTP
<b>Host:</b>	Mouse
<b>Reactivity:</b>	Human
<b>Quality Control Testing:</b>	Antibody reactive against mammalian transfected lysate.
<b>Storage Buffer:</b>	In 1x PBS, pH 7.4
<b>Storage Instruction:</b>	Store at -20°C or lower. Aliquot to avoid repeated freezing and thawing.
<b>MSDS:</b>	 <a href="#">Download</a>
<b>Datasheet:</b>	 <a href="#">Download</a>

**Application Image**

Western Blot (Transfected lysate)

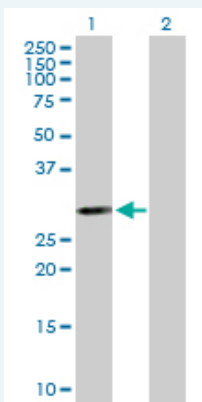


Immunofluorescence



**Applications**

**Western Blot (Transfected lysate)**

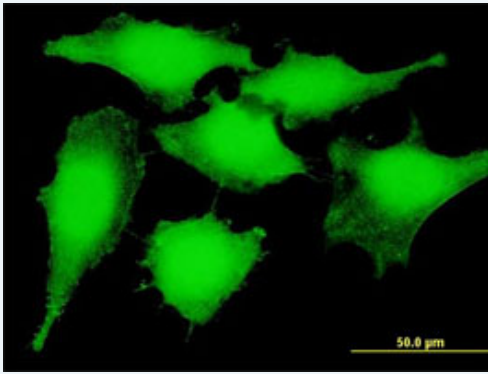


Western Blot analysis of PSMB5 expression in transfected 293T cell line (H00005693-T03) by PSMB5 MaxPab polyclonal antibody.

Lane 1: PSMB5 transfected lysate(29.04 KDa).  
Lane 2: Non-transfected lysate.

 [Protocol Download](#)

**Immunofluorescence**



[enlarge this image](#)

Immunofluorescence of purified MaxPab antibody to PSMB5 on HeLa cell. [antibody concentration 10 ug/ml]

 [Protocol Download](#)

## Gene Information

**Entrez GeneID:** [5693](#)

**GeneBank Accession#:** [BC057840](#)

**Protein Accession#:** [AAH57840](#)

**Gene Name:** PSMB5

**Gene Alias:** LMPX,MB1,MGC104214,X

**Gene Description:** proteasome (prosome, macropain) subunit, beta type, 5

**Omim ID:** [600306](#)

**Gene Ontology:** [Hyperlink](#)

**Gene Summary:** The proteasome is a multicatalytic proteinase complex with a highly ordered ring-shaped 20S core structure. The core structure is composed of 4 rings of 28 non-identical subunits; 2 rings are composed of 7 alpha subunits and 2 rings are composed of 7 beta subunits. Proteasomes are distributed throughout eukaryotic cells at a high concentration and cleave peptides in an ATP/ubiquitin-dependent process in a non-lysosomal pathway. An essential function of a modified proteasome, the immunoproteasome, is the processing of class I MHC peptides. This gene encodes a member of the proteasome B-type family, also known as the T1B family, that is a 20S core beta subunit in the proteasome. This catalytic subunit is not present in the immunoproteasome and is replaced by catalytic subunit 3i (proteasome beta 8 subunit). Multiple transcript variants encoding different isoforms have been found for this gene. [provided by RefSeq]

**Other Designations:** PSX large multifunctional protease X,macropain epsilon chain,multicatalytic endopeptidase complex epsilon chain,proteasome beta 5 subunit,proteasome catalytic subunit 3,proteasome chain 6,proteasome epsilon chain,proteasome subunit MB1,proteasome subunit

## Gene Pathway

[Proteasome](#)

