



SZABO SCANDIC

Part of Europa Biosite

Produktinformation



Forschungsprodukte & Biochemikalien



Zellkultur & Verbrauchsmaterial



Diagnostik & molekulare Diagnostik



Laborgeräte & Service

Weitere Information auf den folgenden Seiten!
See the following pages for more information!



Lieferung & Zahlungsart

siehe unsere [Liefer- und Versandbedingungen](#)

Zuschläge

- Mindermengenzuschlag
- Trockeneiszuschlag
- Gefahrgutzuschlag
- Expressversand

SZABO-SCANDIC HandelsgmbH

Quellenstraße 110, A-1100 Wien

T. +43(0)1 489 3961-0

F. +43(0)1 489 3961-7

mail@szabo-scandic.com

www.szabo-scandic.com

[linkedin.com/company/szaboscandic](https://www.linkedin.com/company/szaboscandic) 

PSMB6 polyclonal antibody (A01)

Catalog # : H00005694-A01

規格 : [50 uL]

List All

Specification

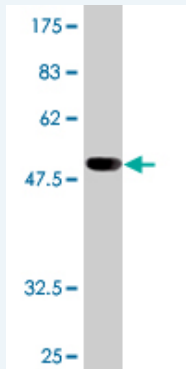
Product Description:	Mouse polyclonal antibody raised against a full-length recombinant PSMB6.
Immunogen:	PSMB6 (AAH00835, 1 a.a. ~ 239 a.a) full-length recombinant protein with GST tag.
Sequence:	MAATLLAARGAGPAPAWGPEAFTPDWESREVSTGTTIMAVQFDGGVWL GADSRITTTGSYIANRVTDDELTPIHDRIFCCRSRSAADTQAVADAVTYQLG FHSIELNEPPLVHTAASLFKEMCYRYREDLMAGIIIIAGWDPQEGGQVYSV PMGGMMVRQSFAGGSGSSYIYGVDATYREGMTKEECLQFTANALAL AMERDGSSGGVIRLAAIAESGVERQVLLGDQIPKFAVATLPPA
Host:	Mouse
Reactivity:	Human

Application Image

Western Blot (Recombinant protein)

ELISA

Quality Control Testing: Antibody Reactive Against Recombinant Protein.



Western Blot detection against Immunogen (52.4 KDa) .

Storage Buffer: 50 % glycerol

Storage Instruction: Store at -20°C or lower. Aliquot to avoid repeated freezing and thawing.

MSDS: [Download](#)

Datasheet: [Download](#)

Applications

Western Blot (Recombinant protein)

[Protocol Download](#)

ELISA

Gene Information

Entrez GeneID: [5694](#)

**GeneBank
Accession#:** [BC000835](#)

**Protein
Accession#:** [AAH00835](#)

Gene Name: PSMB6

Gene Alias: DELTA,LMPY,MGC5169,Y

**Gene
Description:** proteasome (prosome, macropain) subunit, beta type, 6

Omim ID: [600307](#)

Gene Ontology: [Hyperlink](#)

Gene Summary: The proteasome is a multicatalytic proteinase complex with a highly ordered ring-shaped 20S core structure. The core structure is composed of 4 rings of 28 non-identical subunits; 2 rings are composed of 7 alpha subunits and 2 rings are composed of 7 beta subunits. Proteasomes are distributed throughout eukaryotic cells at a high concentration and cleave peptides in an ATP/ubiquitin-dependent process in a non-lysosomal pathway. An essential function of a modified proteasome, the immunoproteasome, is the processing of class I MHC peptides. This gene encodes a member of the proteasome B-type family, also known as the T1B family, that is a 20S core beta subunit in the proteasome. This catalytic subunit is not present in the immunoproteasome and is replaced by catalytic subunit 1i (proteasome beta 9 subunit). [provided by RefSeq]

**Other
Designations:** PSY large multifunctional protease Y,macropain delta chain,multicatalytic endopeptidase complex delta chain,proteasome beta 6 subunit,proteasome catalytic subunit 1,proteasome delta chain,proteasome subunit Y,proteasome subunit beta 6,proteasome subunit d

Gene Pathway

[Proteasome](#)

Related Disease

[Kidney Failure, Chronic](#)

[服務條款](#) | [隱私權政策](#) | [著作及商標](#) | [網站地圖](#)

©2016 亞諾法生技股份有限公司 Abnova Corporation. 版權所有.