



# SZABO SCANDIC

Part of Europa Biosite

## Produktinformation



Forschungsprodukte & Biochemikalien



Zellkultur & Verbrauchsmaterial



Diagnostik & molekulare Diagnostik



Laborgeräte & Service

Weitere Information auf den folgenden Seiten!  
See the following pages for more information!



### Lieferung & Zahlungsart

siehe unsere [Liefer- und Versandbedingungen](#)

### Zuschläge

- Mindermengenzuschlag
- Trockeneiszuschlag
- Gefahrgutzuschlag
- Expressversand

### SZABO-SCANDIC HandelsgmbH

Quellenstraße 110, A-1100 Wien

T. +43(0)1 489 3961-0

F. +43(0)1 489 3961-7

[mail@szabo-scandic.com](mailto:mail@szabo-scandic.com)

[www.szabo-scandic.com](http://www.szabo-scandic.com)

[linkedin.com/company/szaboscandic](https://www.linkedin.com/company/szaboscandic) 

## PSMB6 monoclonal antibody (M01), clone 2A3-5A8

Catalog # : H00005694-M01

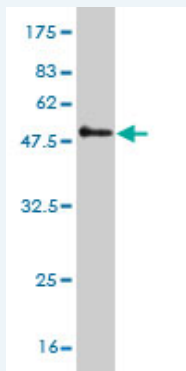
規格 : [ 100 ug ]

[List All](#)

### Specification

<b>Product Description:</b>	Mouse monoclonal antibody raised against a full length recombinant PSMB6.
<b>Immunogen:</b>	PSMB6 (AAH00835, 1 a.a. ~ 239 a.a) full-length recombinant protein with GST tag. MW of the GST tag alone is 26 KDa.
<b>Sequence:</b>	MAATLLAARGAGPAPAWGPEAFTPDWESREVSTGTTIMAVQFDGGVVL GADSRRTTGSYIANRVTDDELTPHDRIFCCRSQSAADTQAVADAVTYQLG FHSIELNEPPLVHTAASLFKEMCYRYREDLMAGIIAGWDPQEGGQVYSV PMGGMMVRQSFAIGGSGSSYIYGVDATYREGMTKEECLQFTANALAL AMERDGSSTGGVIRLAAIAESGVERQVLLGDQIPKFAVATLPPA
<b>Host:</b>	Mouse
<b>Reactivity:</b>	Human
<b>Isotype:</b>	IgG1 Kappa

**Quality Control Testing:** Antibody Reactive Against Recombinant Protein.



Western Blot detection against Immunogen (52.03 KDa) .

**Storage Buffer:** In 1x PBS, pH 7.4

**Storage Instruction:** Store at -20°C or lower. Aliquot to avoid repeated freezing and thawing.

**MSDS:** [Download](#)

**Datasheet:** [Download](#)

### Applications

**Western Blot (Recombinant protein)**

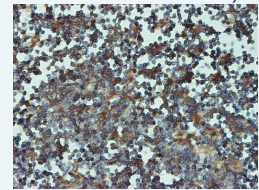
[Protocol Download](#)

**Immunohistochemistry (Formalin/PFA-fixed paraffin-embedded sections)**

### Application Image

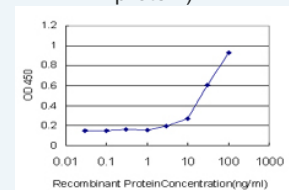
Western Blot (Recombinant protein)

Immunohistochemistry (Formalin/PFA-fixed paraffin-embedded sections)



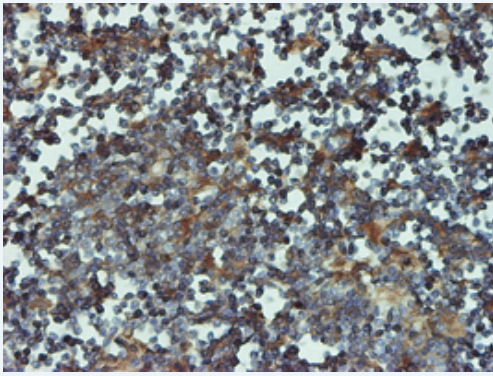
[enlarge](#)

Sandwich ELISA (Recombinant protein)



[enlarge](#)

ELISA

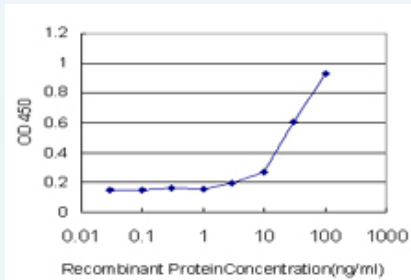


[enlarge this image](#)

Immunoperoxidase of monoclonal antibody to PSMB6 on formalin-fixed paraffin-embedded human lymph node tissue. [antibody concentration 1 ~ 10 ug/ml]

[Protocol Download](#)

### Sandwich ELISA (Recombinant protein)



Detection limit for recombinant GST tagged PSMB6 is approximately 3ng/ml as a capture antibody.

[Protocol Download](#)

### ELISA

#### Gene Information

Entrez GeneID: [5694](#)

GeneBank Accession#: [BC000835](#)

Protein Accession#: [AAH00835](#)

Gene Name: PSMB6

Gene Alias: DELTA,LMPY,MGC5169,Y

Gene Description: proteasome (prosome, macropain) subunit, beta type, 6

Omim ID: [600307](#)

Gene Ontology: [Hyperlink](#)

**Gene Summary:** The proteasome is a multicatalytic proteinase complex with a highly ordered ring-shaped 20S core structure. The core structure is composed of 4 rings of 28 non-identical subunits; 2 rings are composed of 7 alpha subunits and 2 rings are composed of 7 beta subunits. Proteasomes are distributed throughout eukaryotic cells at a high concentration and cleave peptides in an ATP/ubiquitin-dependent process in a non-lysosomal pathway. An essential function of a modified proteasome, the immunoproteasome, is the processing of class I MHC peptides. This gene encodes a member of the proteasome B-type family, also known as the T1B family, that is a 20S core beta subunit in the proteasome. This catalytic subunit is not present in the immunoproteasome and is replaced by catalytic subunit 1i (proteasome beta 9 subunit). [provided by RefSeq]

**Other** PSY large multifunctional protease Y,macropain delta  
**Designations:** chain,multicatalytic endopeptidase complex delta chain,proteasome  
beta 6 subunit,proteasome catalytic subunit 1,proteasome delta  
chain,proteasome subunit Y,proteasome subunit beta 6,proteasome  
subunit d

---

### Gene Pathway

[Proteasome](#)

---

### Related Disease

[Kidney Failure, Chronic](#)

---

[服務條款](#) | [隱私權政策](#) | [著作及商標](#) | [網站地圖](#)

©2016 亞諾法生技股份有限公司 Abnova Corporation. 版權所有.