



SZABO SCANDIC

Part of Europa Biosite

Produktinformation



Forschungsprodukte & Biochemikalien



Zellkultur & Verbrauchsmaterial



Diagnostik & molekulare Diagnostik



Laborgeräte & Service

Weitere Information auf den folgenden Seiten!
See the following pages for more information!



Lieferung & Zahlungsart

siehe unsere [Liefer- und Versandbedingungen](#)

Zuschläge

- Mindermengenzuschlag
- Trockeneiszuschlag
- Gefahrgutzuschlag
- Expressversand

SZABO-SCANDIC HandelsgmbH

Quellenstraße 110, A-1100 Wien

T. +43(0)1 489 3961-0

F. +43(0)1 489 3961-7

mail@szabo-scandic.com

www.szabo-scandic.com

[linkedin.com/company/szaboscandic](https://www.linkedin.com/company/szaboscandic) 

PSMB6 monoclonal antibody (M02), clone S51

產品編號 # : H00005694-M02

規格 : [100 ug]

[List All](#)

Specification

Product Description: Mouse monoclonal antibody raised against a full length recombinant PSMB6.

Immunogen: PSMB6 (AAH00835, 1 a.a. ~ 239 a.a) full-length recombinant protein with GST tag. MW of the GST tag alone is 26 KDa.

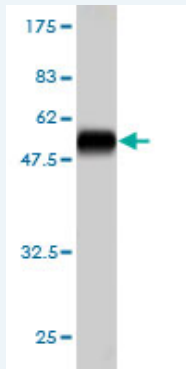
Sequence: MAATLLAARGAGPAPAWGPEAFTPDWESREVSTGTTIMAVQFDGGVVL
GADSRRTTGSYIANRVTDLTPIHDRIFCCRSRSAADTQAVADAVTYQLG
FHSIELNEPPLVHTAASLFKEMCYRYREDLMAGIIIAGWDPQEGGQVYSV
PMGGMMVRQSF AIGGSGSSYIYGVDATYREGMTKEECLQFTANALAL
AMERDGSSGGVIRLAAIAESGVERQVLLGDQIPKFAVATLPPA

Host: Mouse

Reactivity: Human

Isotype: IgG2b Kappa

Quality Control Testing: Antibody Reactive Against Recombinant Protein.



Western Blot detection against Immunogen (52.03 KDa) .

Storage Buffer: In 1x PBS, pH 7.4

Storage Instruction: Store at -20°C or lower. Aliquot to avoid repeated freezing and thawing.

MSDS: [Download](#)

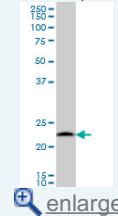
Datasheet: [Download](#)

Applications

Western Blot (Cell lysate)

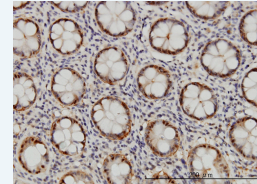
Application Image

Western Blot (Cell lysate)



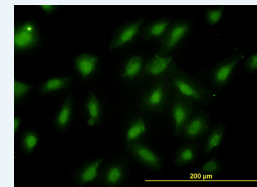
Western Blot (Recombinant protein)

Immunohistochemistry (Formalin/PFA-fixed paraffin-embedded sections)



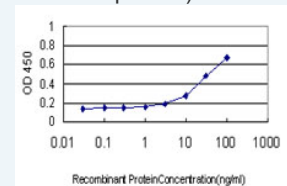
[enlarge](#)

Immunofluorescence



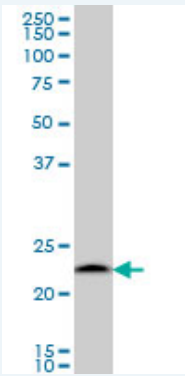
[enlarge](#)

Sandwich ELISA (Recombinant protein)



[enlarge](#)

ELISA



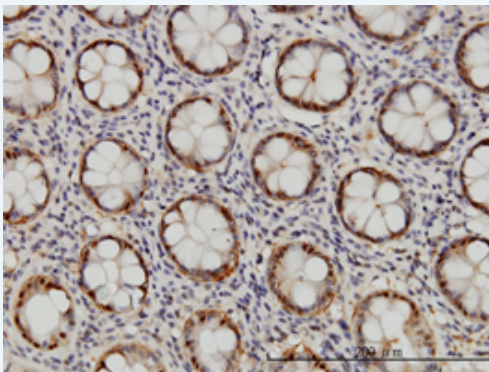
PSMB6 monoclonal antibody (M02), clone S51 Western Blot analysis of PSMB6 expression in A-431 (Cat # L015V1).

[Protocol Download](#)

Western Blot (Recombinant protein)

[Protocol Download](#)

Immunohistochemistry (Formalin/PFA-fixed paraffin-embedded sections)

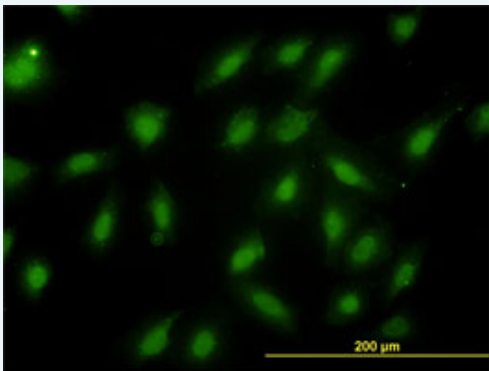


[enlarge this image](#)

Immunoperoxidase of monoclonal antibody to PSMB6 on formalin-fixed paraffin-embedded human colon. [antibody concentration 1 ug/ml]

[Protocol Download](#)

Immunofluorescence

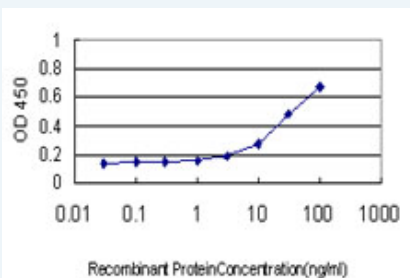


[enlarge this image](#)

Immunofluorescence of monoclonal antibody to PSMB6 on HeLa cell. [antibody concentration 10 ug/ml]

[Protocol Download](#)

Sandwich ELISA (Recombinant protein)



Detection limit for recombinant GST tagged PSMB6 is approximately 0.3ng/ml as a capture antibody.

ELISA

Gene Information

Entrez GeneID: [5694](#)

GeneBank Accession#: [BC000835](#)

Protein Accession#: [AAH00835](#)

Gene Name: PSMB6

Gene Alias: DELTA,LMPY,MGC5169,Y

Gene Description: proteasome (prosome, macropain) subunit, beta type, 6

Omim ID: [600307](#)

Gene Ontology: [Hyperlink](#)

Gene Summary: The proteasome is a multicatalytic proteinase complex with a highly ordered ring-shaped 20S core structure. The core structure is composed of 4 rings of 28 non-identical subunits; 2 rings are composed of 7 alpha subunits and 2 rings are composed of 7 beta subunits. Proteasomes are distributed throughout eukaryotic cells at a high concentration and cleave peptides in an ATP/ubiquitin-dependent process in a non-lysosomal pathway. An essential function of a modified proteasome, the immunoproteasome, is the processing of class I MHC peptides. This gene encodes a member of the proteasome B-type family, also known as the T1B family, that is a 20S core beta subunit in the proteasome. This catalytic subunit is not present in the immunoproteasome and is replaced by catalytic subunit 1i (proteasome beta 9 subunit). [provided by RefSeq]

Other Designations: PSY large multifunctional protease Y,macropain delta chain,multicatalytic endopeptidase complex delta chain,proteasome beta 6 subunit,proteasome catalytic subunit 1,proteasome delta chain,proteasome subunit Y,proteasome subunit beta 6,proteasome subunit d

Gene Pathway

[Proteasome](#)

Related Disease

[Kidney Failure, Chronic](#)