



SZABO SCANDIC

Part of Europa Biosite

Produktinformation



Forschungsprodukte & Biochemikalien



Zellkultur & Verbrauchsmaterial



Diagnostik & molekulare Diagnostik



Laborgeräte & Service

Weitere Information auf den folgenden Seiten!
See the following pages for more information!



Lieferung & Zahlungsart

siehe unsere [Liefer- und Versandbedingungen](#)

Zuschläge

- Mindermengenzuschlag
- Trockeneiszuschlag
- Gefahrgutzuschlag
- Expressversand

SZABO-SCANDIC HandelsgmbH

Quellenstraße 110, A-1100 Wien

T. +43(0)1 489 3961-0

F. +43(0)1 489 3961-7

mail@szabo-scandic.com

www.szabo-scandic.com

[linkedin.com/company/szaboscandic](https://www.linkedin.com/company/szaboscandic) 



PSMB7 purified MaxPab mouse polyclonal antibody (B01P) MaxPab®

Catalog # : H00005695-B01P

規格 : [50 ug]

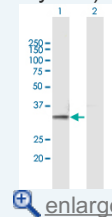
[List All](#)


Specification

Product Description:	Mouse polyclonal antibody raised against a full-length human PSMB7 protein.
Immunogen:	PSMB7 (NP_002790.1, 1 a.a. ~ 277 a.a) full-length human protein.
Sequence:	MAAVSVYAPPVGGFSFDNCRRNAVLEADFAKRGYKLPKVRKTGTTIAGV VYKDGIVLGADTRATEGMVVADKNC斯基HFISPNIYCCGAGTAADTDMTT QLISSNLELHSLSTGRLPRVVTANRMLKQMLFRYQGYGAALVGGVDVT GPHLYSIYPHGSTDKLPYVTMGSGSLAAMAVFEDKFRPDMEEEEAKNLV SEAIAGIFNDLGSGSNIDLCVISKNKLDLFRPYTPVNKKGTRLGRYRCEK GTTAVLTEKITPLEIEVLEETVQTMDS
Host:	Mouse
Reactivity:	Human
Quality Control Testing:	Antibody reactive against mammalian transfected lysate.
Storage Buffer:	In 1x PBS, pH 7.4
Storage Instruction:	Store at -20°C or lower. Aliquot to avoid repeated freezing and thawing.
MSDS:	 Download
Datasheet:	 Download

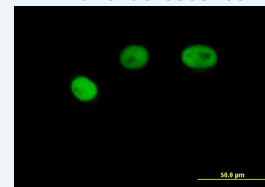
Application Image

Western Blot (Transfected lysate)



 [enlarge](#)

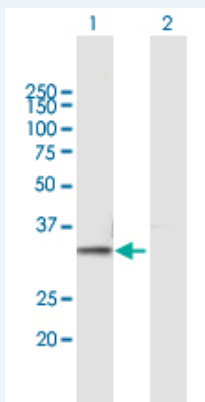
Immunofluorescence



 [enlarge](#)

Applications

Western Blot (Transfected lysate)

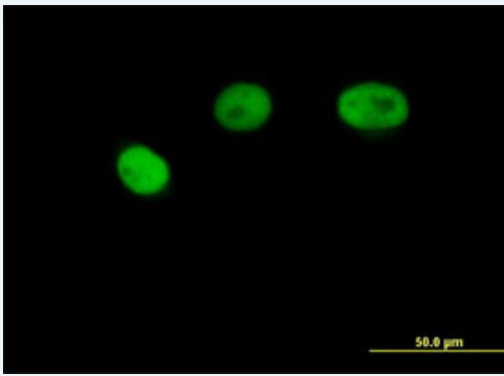


Western Blot analysis of PSMB7 expression in transfected 293T cell line (H00005695-T01) by PSMB7 MaxPab polyclonal antibody.

Lane 1: PSMB7 transfected lysate(30.47 KDa).
Lane 2: Non-transfected lysate.

 [Protocol Download](#)

Immunofluorescence



[enlarge this image](#)

Immunofluorescence of purified MaxPab antibody to PSMB7 on HeLa cell. [antibody concentration 10 ug/ml]

 [Protocol Download](#)

Gene Information

Entrez GeneID: [5695](#)

**GeneBank
Accession#:** [NM_002799.2](#)

**Protein
Accession#:** [NP_002790.1](#)

Gene Name: PSMB7

Gene Alias: Z

**Gene
Description:** proteasome (prosome, macropain) subunit, beta type, 7

Omim ID: [604030](#)

Gene Ontology: [Hyperlink](#)

Gene Summary: The proteasome is a multicatalytic proteinase complex with a highly ordered ring-shaped 20S core structure. The core structure is composed of 4 rings of 28 non-identical subunits; 2 rings are composed of 7 alpha subunits and 2 rings are composed of 7 beta subunits. Proteasomes are distributed throughout eukaryotic cells at a high concentration and cleave peptides in an ATP/ubiquitin-dependent process in a non-lysosomal pathway. An essential function of a modified proteasome, the immunoproteasome, is the processing of class I MHC peptides. This gene encodes a member of the proteasome B-type family, also known as the T1B family, that is a 20S core beta subunit in the proteasome. Expression of this catalytic subunit is downregulated by gamma interferon and proteolytic processing is required to generate a mature subunit. This subunit is not present in the immunoproteasome and is replaced by catalytic subunit 2i (proteasome beta 10 subunit). [provided by RefSeq]

**Other
Designations:** OTTHUMP00000022798,macropain chain Z,multicatalytic endopeptidase complex chain Z,proteasome beta 7 subunit,proteasome catalytic subunit 2,proteasome subunit Z,proteasome subunit alpha,proteasome subunit beta 7

Gene Pathway

[Proteasome](#)

Related Disease

[Kidney Failure, Chronic Tobacco Use Disorder](#)

