



SZABO SCANDIC

Part of Europa Biosite

Produktinformation



Forschungsprodukte & Biochemikalien



Zellkultur & Verbrauchsmaterial



Diagnostik & molekulare Diagnostik



Laborgeräte & Service

Weitere Information auf den folgenden Seiten!
See the following pages for more information!



Lieferung & Zahlungsart

siehe unsere [Liefer- und Versandbedingungen](#)

Zuschläge

- Mindermengenzuschlag
- Trockeneiszuschlag
- Gefahrgutzuschlag
- Expressversand

SZABO-SCANDIC HandelsgmbH

Quellenstraße 110, A-1100 Wien

T. +43(0)1 489 3961-0

F. +43(0)1 489 3961-7

mail@szabo-scandic.com

www.szabo-scandic.com

[linkedin.com/company/szaboscandic](https://www.linkedin.com/company/szaboscandic) 



PSMB8 purified MaxPab mouse polyclonal antibody (B01P) MaxPab®

Catalog # : H00005696-B01P

規格 : [50 ug]

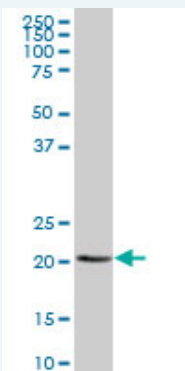
[List All](#)

Specification

Product Description:	Mouse polyclonal antibody raised against a full-length human PSMB8 protein.
Immunogen:	PSMB8 (NP_004150.1, 1 a.a. ~ 272 a.a) full-length human protein.
Sequence:	MLIGTPTPRDTPSSWLTSSLLVEAAPLDDTTLPTPVSSGCPGLEPTEF FQSLGGDGERNVQIEMAHGTTTTLAFKFQHGVI AAVDSRASAGSYISALRV NKVIEINPYLLGTMSGCAADCQYWERLLAKECRLYYLRNGERISVSAASK LLSNMMCQYRGMGLSMGSMICGWKKGPGLYYVDEHGTRL.SGNMFST GSGNTYAYGVMDSGYRPNLSPEEAYDLGRRAIAYATHRDSYSGGVNM YHMKEDGWVKVESTDVS DLLHQYREANQ
Host:	Mouse
Reactivity:	Human
Quality Control Testing:	Antibody reactive against mammalian transfected lysate.
Storage Buffer:	In 1x PBS, pH 7.4
Storage Instruction:	Store at -20°C or lower. Aliquot to avoid repeated freezing and thawing.
MSDS:	 Download
Datasheet:	 Download

Applications

Western Blot (Tissue lysate)



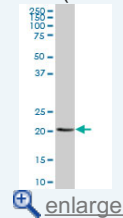
PSMB8 MaxPab polyclonal antibody. Western Blot analysis of PSMB8 expression in human placenta.


 [Protocol Download](#)

Western Blot (Transfected lysate)

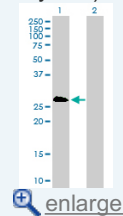
Application Image

Western Blot (Tissue lysate)



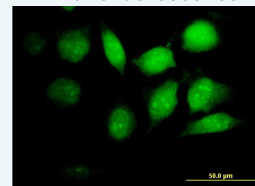
 [enlarge](#)

Western Blot (Transfected lysate)

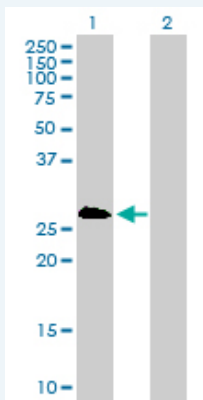


 [enlarge](#)

Immunofluorescence



 [enlarge](#)

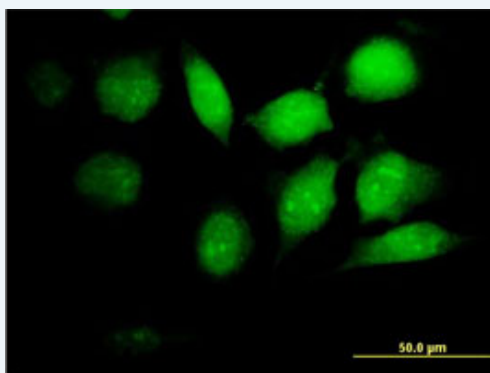


Western Blot analysis of PSMB8 expression in transfected 293T cell line ([H00005696-T01](#)) by PSMB8 MaxPab polyclonal antibody.

Lane 1: PSMB8 transfected lysate(29.92 KDa).
Lane 2: Non-transfected lysate.

[Protocol Download](#)

Immunofluorescence



enlarge this image

Immunofluorescence of purified MaxPab antibody to PSMB8 on HeLa cell. [antibody concentration 10 ug/ml]

[Protocol Download](#)

Gene Information

Entrez GeneID: [5696](#)

GeneBank [NM_004159](#)
Accession#:

Protein [NP_004150.1](#)
Accession#:

Gene Name: PSMB8

Gene Alias: D6S216,D6S216E,LMP7,MGC1491,PSMB5i,RING10,beta5i

Gene Description: proteasome (prosome, macropain) subunit, beta type, 8 (large multifunctional peptidase 7)

Omim ID: [177046](#)

Gene Ontology: [Hyperlink](#)

Gene Summary: The proteasome is a multicatalytic proteinase complex with a highly ordered ring-shaped 20S core structure. The core structure is composed of 4 rings of 28 non-identical subunits; 2 rings are composed of 7 alpha subunits and 2 rings are composed of 7 beta subunits. Proteasomes are distributed throughout eukaryotic cells at a high concentration and cleave peptides in an ATP/ubiquitin-dependent process in a non-lysosomal pathway. An essential function of a modified proteasome, the immunoproteasome, is the processing of class I MHC

peptides. This gene encodes a member of the proteasome B-type family, also known as the T1B family, that is a 20S core beta subunit. This gene is located in the class II region of the MHC (major histocompatibility complex). Expression of this gene is induced by gamma interferon and this gene product replaces catalytic subunit 3 (proteasome beta 5 subunit) in the immunoproteasome. Proteolytic processing is required to generate a mature subunit. Two alternative transcripts encoding two isoforms have been identified; both isoforms are processed to yield the same mature subunit. [provided by RefSeq]

Other Designations: OTTHUMP00000029420,OTTHUMP00000029421,OTTHUMP000000062981,low molecular weight protein 7,macropain subunit C13,multicatalytic endopeptidase complex subunit C13,protease component C13,proteasome (prosome, macropain) subunit beta type 8 (large multifunctiona

Gene Pathway

[Proteasome](#)

Related Disease

[Acute Disease](#) [Alveolitis](#), [Extrinsic Allergic Arthritis](#), [Juvenile Rheumatoid Arthritis](#), [Reactive Asthma](#) [Asthma](#) [Bronchiolitis](#), [Viral Brucellosis](#) [Cardiovascular Diseases](#) [Coronary Disease](#) [Dermatitis](#), [Atopic](#) [Diabetes Mellitus](#), [Type 1](#) [Diabetes Mellitus](#), [Type 2](#) [Diseases in Twins](#) [Edema](#) [Genetic Predisposition to Disease](#) [Hepatitis B](#) [Hepatitis C](#) [Hepatitis C](#), [Chronic](#)

[... see more](#)

[服務條款](#) | [隱私權政策](#) | [著作及商標](#) | [網站地圖](#)

©2016 亞諾法生技股份有限公司 Abnova Corporation. 版權所有.