



# SZABO SCANDIC

Part of Europa Biosite

## Produktinformation



Forschungsprodukte & Biochemikalien



Zellkultur & Verbrauchsmaterial



Diagnostik & molekulare Diagnostik



Laborgeräte & Service

Weitere Information auf den folgenden Seiten!  
See the following pages for more information!



### Lieferung & Zahlungsart

siehe unsere [Liefer- und Versandbedingungen](#)

### Zuschläge

- Mindermengenzuschlag
- Trockeneiszuschlag
- Gefahrgutzuschlag
- Expressversand

### SZABO-SCANDIC HandelsgmbH

Quellenstraße 110, A-1100 Wien

T. +43(0)1 489 3961-0

F. +43(0)1 489 3961-7

[mail@szabo-scandic.com](mailto:mail@szabo-scandic.com)

[www.szabo-scandic.com](http://www.szabo-scandic.com)

[linkedin.com/company/szaboscandic](https://www.linkedin.com/company/szaboscandic) 

## PSMB8 monoclonal antibody (M03), clone 1G7

Catalog # : H00005696-M03

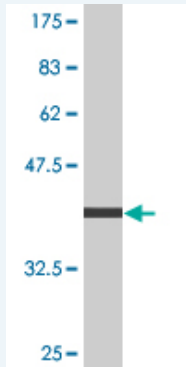
規格 : [ 100 ug ]

[List All](#)

### Specification

<b>Product Description:</b>	Mouse monoclonal antibody raised against a partial recombinant PSMB8.
<b>Immunogen:</b>	PSMB8 (AAH01114, 173 a.a. ~ 272 a.a) partial recombinant protein with GST tag. MW of the GST tag alone is 26 KDa.
<b>Sequence:</b>	DKKGPGLYYVDEHGTRLSGNMFSTGSGNTYAYGVMDSGYRPNLSPEE AYDLGRRAIAYATHRDSYSGGVNMYHMKEDGWVKVESTDVSDLLHQY REANQ
<b>Host:</b>	Mouse
<b>Reactivity:</b>	Human
<b>Isotype:</b>	IgG2a Kappa

**Quality Control Testing:** Antibody Reactive Against Recombinant Protein.



Western Blot detection against Immunogen (36.74 KDa) .

**Storage Buffer:** In 1x PBS, pH 7.4

**Storage Instruction:** Store at -20°C or lower. Aliquot to avoid repeated freezing and thawing.

**MSDS:** [Download](#)

**Datasheet:** [Download](#)

### Applications

**Western Blot (Recombinant protein)**

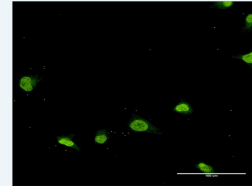
[Protocol Download](#)

**Immunofluorescence**

### Application Image

Western Blot (Recombinant protein)

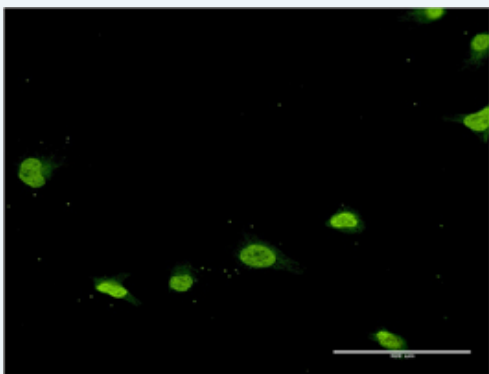
Immunofluorescence



[enlarge](#)

Sandwich ELISA (Recombinant protein)

ELISA



[enlarge this image](#)

Immunofluorescence of monoclonal antibody to PSMB8 on HeLa cell . [antibody concentration 10 ug/ml]

[Protocol Download](#)

### Sandwich ELISA (Recombinant protein)

Detection limit for recombinant GST tagged PSMB8 is approximately 30ng/ml as a capture antibody.

[Protocol Download](#)

### ELISA

### Gene Information

Entrez GeneID: [5696](#)

GeneBank Accession#: [BC001114](#)

Protein Accession#: [AAH01114](#)

Gene Name: PSMB8

Gene Alias: D6S216,D6S216E,LMP7,MGC1491,PSMB5i,RING10,beta5i

Gene Description: proteasome (prosome, macropain) subunit, beta type, 8 (large multifunctional peptidase 7)

Omim ID: [177046](#)

Gene Ontology: [Hyperlink](#)

**Gene Summary:** The proteasome is a multicatalytic proteinase complex with a highly ordered ring-shaped 20S core structure. The core structure is composed of 4 rings of 28 non-identical subunits; 2 rings are composed of 7 alpha subunits and 2 rings are composed of 7 beta subunits. Proteasomes are distributed throughout eukaryotic cells at a high concentration and cleave peptides in an ATP/ubiquitin-dependent process in a non-lysosomal pathway. An essential function of a modified proteasome, the immunoproteasome, is the processing of class I MHC peptides. This gene encodes a member of the proteasome B-type family, also known as the T1B family, that is a 20S core beta subunit. This gene is located in the class II region of the MHC (major histocompatibility complex). Expression of this gene is induced by gamma interferon and this gene product replaces catalytic subunit 3 (proteasome beta 5 subunit) in the immunoproteasome. Proteolytic processing is required to generate a mature subunit. Two alternative transcripts encoding two isoforms have been identified; both isoforms are processed to yield the same mature subunit. [provided by RefSeq]

**Other Designations:** OTTHUMP00000029420,OTTHUMP00000029421,OTTHUMP00000062981,low molecular weight protein 7,macropain subunit C13,multicatalytic endopeptidase complex subunit C13,protease component C13,proteasome (prosome, macropain) subunit beta type 8 (large multifunctiona

## Gene Pathway

---

[Proteasome](#)

## Related Disease

---

[Acute Disease](#) [Alveolitis](#), [Extrinsic Allergic Arthritis](#), [Juvenile Rheumatoid Arthritis](#), [Reactive Asthma](#) [Asthma](#) [Bronchiolitis](#), [Viral Brucellosis](#) [Cardiovascular Diseases](#) [Coronary Disease](#) [Dermatitis](#), [Atopic](#) [Diabetes Mellitus](#), [Type 1 Diabetes Mellitus](#), [Type 2 Diseases in Twins](#) [Edema](#) [Genetic Predisposition to Disease](#) [Hepatitis B](#) [Hepatitis C](#) [Hepatitis C, Chronic](#)

[... see more](#)

---

[服務條款](#) | [隱私權政策](#) | [著作及商標](#) | [網站地圖](#)

©2016 亞諾法生技股份有限公司 Abnova Corporation. 版權所有.