



SZABO SCANDIC

Part of Europa Biosite

Produktinformation



Forschungsprodukte & Biochemikalien



Zellkultur & Verbrauchsmaterial



Diagnostik & molekulare Diagnostik



Laborgeräte & Service

Weitere Information auf den folgenden Seiten!
See the following pages for more information!



Lieferung & Zahlungsart

siehe unsere [Liefer- und Versandbedingungen](#)

Zuschläge

- Mindermengenzuschlag
- Trockeneiszuschlag
- Gefahrgutzuschlag
- Expressversand

SZABO-SCANDIC HandelsgmbH

Quellenstraße 110, A-1100 Wien

T. +43(0)1 489 3961-0

F. +43(0)1 489 3961-7

mail@szabo-scandic.com

www.szabo-scandic.com

[linkedin.com/company/szaboscandic](https://www.linkedin.com/company/szaboscandic) 

PSMB8 293T Cell Transient Overexpression Lysate(Denatured)

Catalog # : H00005696-T01

規格 : [100 uL]

List All

Specification

Transfected Cell Line: 293T

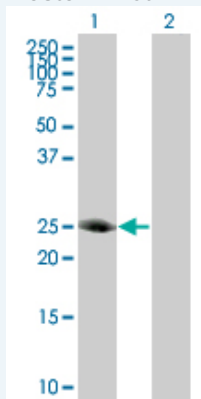
Plasmid: pCMV-PSMB8 full-length

Host: Human

Theoretical MW (kDa): 30.03

Quality Control Testing: Transient overexpression cell lysate was tested with Anti-PSMB8 antibody ([H00005696-B01](#)) by Western Blots.

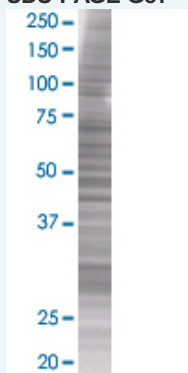
Western Blot



Lane 1: PSMB8 transfected lysate (29.8 KDa)

Lane 2: Non-transfected lysate.

SDS-PAGE Gel



PSMB8 transfected lysate.

Storage Buffer: 1X Sample Buffer (50 mM Tris-HCl, 2% SDS, 10% glycerol, 300 mM 2-mercaptoethanol, 0.01% Bromophenol blue)

Storage Instruction: Store at -80°C. Aliquot to avoid repeated freezing and thawing.

MSDS:  [Download](#)

Applications

Application Image

Western Blot

Western Blot

Gene Information

Entrez GeneID: [5696](#)

GeneBank Accession#: [NM_004159](#)

Protein Accession#: [NP_004150](#)

Gene Name: PSMB8

Gene Alias: D6S216,D6S216E,LMP7,MGC1491,PSMB5i,RING10,beta5i

Gene Description: proteasome (prosome, macropain) subunit, beta type, 8 (large multifunctional peptidase 7)

Omim ID: [177046](#)

Gene Ontology: [Hyperlink](#)

Gene Summary: The proteasome is a multicatalytic proteinase complex with a highly ordered ring-shaped 20S core structure. The core structure is composed of 4 rings of 28 non-identical subunits; 2 rings are composed of 7 alpha subunits and 2 rings are composed of 7 beta subunits. Proteasomes are distributed throughout eukaryotic cells at a high concentration and cleave peptides in an ATP/ubiquitin-dependent process in a non-lysosomal pathway. An essential function of a modified proteasome, the immunoproteasome, is the processing of class I MHC peptides. This gene encodes a member of the proteasome B-type family, also known as the T1B family, that is a 20S core beta subunit. This gene is located in the class II region of the MHC (major histocompatibility complex). Expression of this gene is induced by gamma interferon and this gene product replaces catalytic subunit 3 (proteasome beta 5 subunit) in the immunoproteasome. Proteolytic processing is required to generate a mature subunit. Two alternative transcripts encoding two isoforms have been identified; both isoforms are processed to yield the same mature subunit. [provided by RefSeq]

Other Designations: OTTHUMP00000029420,OTTHUMP00000029421,OTTHUMP00000062981,low molecular weight protein 7,macropain subunit C13,multicatalytic endopeptidase complex subunit C13,protease component C13,proteasome (prosome, macropain) subunit beta type 8 (large multifunctiona

Gene Pathway

[Proteasome](#)

Related Disease

[Acute Disease](#) [Alveolitis](#), [Extrinsic Allergic Arthritis](#), [Juvenile Rheumatoid Arthritis](#), [Reactive Asthma](#) [Asthma](#) [Bronchiolitis](#), [Viral Brucellosis](#) [Cardiovascular Diseases](#) [Coronary Disease](#) [Dermatitis](#), [Atopic Diabetes Mellitus](#), [Type 1 Diabetes Mellitus](#), [Type 2 Diseases in Twins](#) [Edema](#) [Genetic Predisposition to Disease](#) [Hepatitis B](#) [Hepatitis C](#) [Hepatitis C](#), [Chronic](#)

... see more