



# SZABO SCANDIC

Part of Europa Biosite

## Produktinformation



Forschungsprodukte & Biochemikalien



Zellkultur & Verbrauchsmaterial



Diagnostik & molekulare Diagnostik



Laborgeräte & Service

Weitere Information auf den folgenden Seiten!  
See the following pages for more information!



### Lieferung & Zahlungsart

siehe unsere [Liefer- und Versandbedingungen](#)

### Zuschläge

- Mindermengenzuschlag
- Trockeneiszuschlag
- Gefahrgutzuschlag
- Expressversand

### SZABO-SCANDIC HandelsgmbH

Quellenstraße 110, A-1100 Wien

T. +43(0)1 489 3961-0

F. +43(0)1 489 3961-7

[mail@szabo-scandic.com](mailto:mail@szabo-scandic.com)

[www.szabo-scandic.com](http://www.szabo-scandic.com)

[linkedin.com/company/szaboscandic](https://www.linkedin.com/company/szaboscandic) 

## PSMB9 polyclonal antibody (A01)

Catalog # : H00005698-A01

規格 : [ 50 uL ]

[List All](#)

### Specification

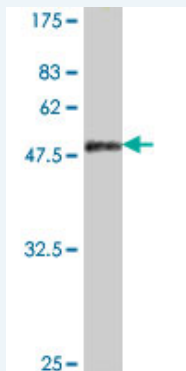
<b>Product Description:</b>	Mouse polyclonal antibody raised against a full-length recombinant PSMB9.
<b>Immunogen:</b>	PSMB9 (AAH65513, 1 a.a. ~ 219 a.a) full-length recombinant protein with GST tag.
<b>Sequence:</b>	MLRAGAPTGDLPRAGEVHTGTTIMAVEFDGGVVMGSDSRVSAGEAVN RVFDKLSPLHERIYCALSGSAADAQAVADMAAYQLELHGIELEEPPLVLA AANVVRNISKYREDLSAHLMVAGWDQREGGQVYGTGGMLTRQPFAI GGSGSTFIYGYVDAAYKPGMSPEECRRFTTDAIALAMSRDGGSSGGVIYL VTITAAGVDHRVILGNELPKFYDE
<b>Host:</b>	Mouse
<b>Reactivity:</b>	Human

### Application Image

Western Blot (Recombinant protein)

ELISA

**Quality Control Testing:** Antibody Reactive Against Recombinant Protein.



Western Blot detection against Immunogen (50.2 KDa) .

**Storage Buffer:** 50 % glycerol

**Storage Instruction:** Store at -20°C or lower. Aliquot to avoid repeated freezing and thawing.

**MSDS:** [Download](#)

**Datasheet:** [Download](#)

### Applications

**Western Blot (Recombinant protein)**

[Protocol Download](#)

**ELISA**

### Gene Information

**Entrez GeneID:** [5698](#)

**GeneBank Accession#:** [BC065513](#)

**Protein Accession#:** [AAH65513](#)

**Gene Name:** PSMB9

**Gene Alias:** LMP2,MGC70470,PSMB6i,RING12,beta1i

**Gene Description:** proteasome (prosome, macropain) subunit, beta type, 9 (large multifunctional peptidase 2)

**Omim ID:** [177045](#)

**Gene Ontology:** [Hyperlink](#)

**Gene Summary:** The proteasome is a multicatalytic proteinase complex with a highly ordered ring-shaped 20S core structure. The core structure is composed of 4 rings of 28 non-identical subunits; 2 rings are composed of 7 alpha subunits and 2 rings are composed of 7 beta subunits. Proteasomes are distributed throughout eukaryotic cells at a high concentration and cleave peptides in an ATP/ubiquitin-dependent process in a non-lysosomal pathway. An essential function of a modified proteasome, the immunoproteasome, is the processing of class I MHC peptides. This gene encodes a member of the proteasome B-type family, also known as the T1B family, that is a 20S core beta subunit. This gene is located in the class II region of the MHC (major histocompatibility complex). Expression of this gene is induced by gamma interferon and this gene product replaces catalytic subunit 1 (proteasome beta 6 subunit) in the immunoproteasome. Proteolytic processing is required to generate a mature subunit. Two alternative transcripts encoding different isoforms have been identified; both isoforms are processed to yield the same mature subunit. [provided by RefSeq]

**Other Designations:** OTTHUMP00000029423,OTTHUMP00000062982,low molecular mass protein 2,macropain chain 7,multicatalytic endopeptidase complex chain 7,proteasome beta 9 subunit,proteasome catalytic subunit 1i,proteasome chain 7,proteasome subunit beta 6i,proteasome-related ge

### Gene Pathway

[Proteasome](#)

### Related Disease

[Acute Disease](#) [Alveolitis](#), [Extrinsic Allergic Alzheimer Disease](#) [Alzheimer disease](#) [Arthritis](#), [Juvenile Rheumatoid Arthritis](#), [Reactive Brucellosis](#) [Cadaver Cardiovascular Diseases](#) [Colorectal Neoplasms](#) [Coronary Disease](#) [Dermatitis](#), [Atopic Diabetes Mellitus](#), [Type 2 Diseases in Twins](#) [Edema](#) [Genetic Predisposition to Disease](#) [Hepatitis B](#) [Hepatitis C](#), [Chronic Hypertension](#)

... see more