



SZABO SCANDIC

Part of Europa Biosite

Produktinformation



Forschungsprodukte & Biochemikalien



Zellkultur & Verbrauchsmaterial



Diagnostik & molekulare Diagnostik



Laborgeräte & Service

Weitere Information auf den folgenden Seiten!
See the following pages for more information!



Lieferung & Zahlungsart

siehe unsere [Liefer- und Versandbedingungen](#)

Zuschläge

- Mindermengenzuschlag
- Trockeneiszuschlag
- Gefahrgutzuschlag
- Expressversand

SZABO-SCANDIC HandelsgmbH

Quellenstraße 110, A-1100 Wien

T. +43(0)1 489 3961-0

F. +43(0)1 489 3961-7

mail@szabo-scandic.com

www.szabo-scandic.com

[linkedin.com/company/szaboscandic](https://www.linkedin.com/company/szaboscandic) 

PSMC2 monoclonal antibody (M01), clone 4C10-2C8

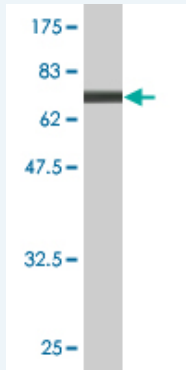
Catalog # : H00005701-M01

規格 : [100 ug]

[List All](#)

Specification

Product Description:	Mouse monoclonal antibody raised against a full length recombinant PSMC2.
Immunogen:	PSMC2 (AAH02589.1, 1 a.a. ~ 433 a.a) full-length recombinant protein with GST tag. MW of the GST tag alone is 26 KDa.
Sequence:	MPDYLGADQRKTKEDDKPIRALDEGDIALLKTYGQSTYSRQIKQVE DDIQLLKKINELTGIKESDTGLAPPALWDLAADKQTLQSEQPLQVARCT KIINADSEDPKYIINVKQFAKFVVDLSDQVAPTDIEEGMRVGVDRNKYQIHIP LPPKIDPTVTMMQVEEKPDVTYSDVGGCKEQIEKLREVVETPLLHPERFV NLGIEPPKGVLLFGPPGTGKTLCAVANRTDACFIRVIGSELVQKYVGE GARMVRELFEMARTKKACLIFFDEIDAIGGARFDDGAGGDNEVQRTMLE LINQLDGFDPKGNKVLNATNRPDTLDPALMRPGRDLDRKIEFSLPDLEGR THIFKIHARMSVERDIRFELLARLCPNSTGAEIRSVCTEAGMFAIRARRKI ATEKDFLEAVNKVIKSYAKFSATPRYMTYN
Host:	Mouse
Reactivity:	Human
Isotype:	IgG1 kappa
Quality Control Testing:	Antibody Reactive Against Recombinant Protein.



Western Blot detection against Immunogen (73.37 KDa) .

Storage Buffer: In 1x PBS, pH 7.4

Storage Instruction: Store at -20°C or lower. Aliquot to avoid repeated freezing and thawing.

MSDS: [Download](#)

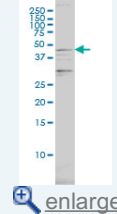
Datasheet: [Download](#)

Applications

Western Blot (Cell lysate)

Application Image

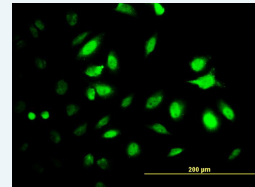
Western Blot (Cell lysate)



[enlarge](#)

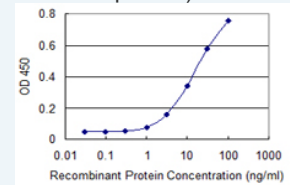
Western Blot (Recombinant protein)

Immunofluorescence



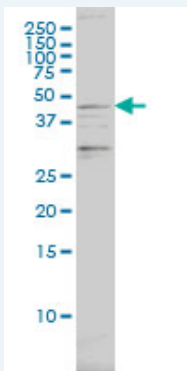
[enlarge](#)

Sandwich ELISA (Recombinant protein)



[enlarge](#)

ELISA



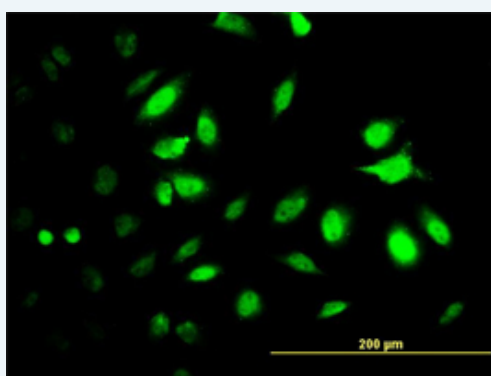
PSMC2 monoclonal antibody (M01), clone 4C10-2C8 Western Blot analysis of PSMC2 expression in SW-13 (Cat # L005V1).

[Protocol Download](#)

Western Blot (Recombinant protein)

[Protocol Download](#)

Immunofluorescence

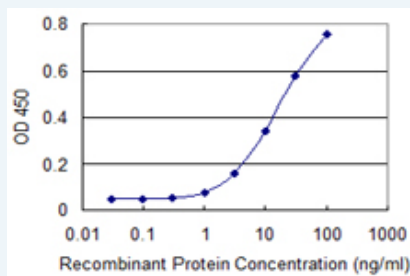


[enlarge this image](#)

Immunofluorescence of monoclonal antibody to PSMC2 on HeLa cell. [antibody concentration 10 ug/ml]

[Protocol Download](#)

Sandwich ELISA (Recombinant protein)



Detection limit for recombinant GST tagged PSMC2 is 0.3 ng/ml as a capture antibody.

[Protocol Download](#)

ELISA

Gene Information

Entrez GeneID: [5701](#)

GeneBank [BC002589](#)

Accession#:

Protein [AAH02589.1](#)

Accession#:

Gene Name: PSMC2

Gene Alias: MGC3004, MSS1, Nbla10058, S7

Gene Description: proteasome (prosome, macropain) 26S subunit, ATPase, 2

Omim ID: [154365](#)

Gene Ontology: [Hyperlink](#)

Gene Summary: The 26S proteasome is a multicatalytic proteinase complex with a highly ordered structure composed of 2 complexes, a 20S core and a 19S regulator. The 20S core is composed of 4 rings of 28 non-identical subunits; 2 rings are composed of 7 alpha subunits and 2 rings are composed of 7 beta subunits. The 19S regulator is composed of a base, which contains 6 ATPase subunits and 2 non-ATPase subunits, and a lid, which contains up to 10 non-ATPase subunits. Proteasomes are distributed throughout eukaryotic cells at a high concentration and cleave peptides in an ATP/ubiquitin-dependent process in a non-lysosomal pathway. An essential function of a modified proteasome, the immunoproteasome, is the processing of class I MHC peptides. This gene encodes one of the ATPase subunits, a member of the triple-A family of ATPases which have a chaperone-like activity. This subunit has been shown to interact with several of the basal transcription factors so, in addition to participation in proteasome functions, this subunit may participate in the regulation of transcription. This subunit may also compete with PSMC3 for binding to the HIV tat protein to regulate the interaction between the viral protein and the transcription complex. [provided by RefSeq]

Other Designations: mammalian suppressor of sgv-1 of yeast, protease 26S subunit 7, proteasome 26S ATPase subunit 2, proteasome 26S subunit, ATPase, 2, putative protein product of Nbla10058

Gene Pathway

[Proteasome](#)