



SZABO SCANDIC

Part of Europa Biosite

Produktinformation



Forschungsprodukte & Biochemikalien



Zellkultur & Verbrauchsmaterial



Diagnostik & molekulare Diagnostik



Laborgeräte & Service

Weitere Information auf den folgenden Seiten!
See the following pages for more information!



Lieferung & Zahlungsart

siehe unsere [Liefer- und Versandbedingungen](#)

Zuschläge

- Mindermengenzuschlag
- Trockeneiszuschlag
- Gefahrgutzuschlag
- Expressversand

SZABO-SCANDIC HandelsgmbH

Quellenstraße 110, A-1100 Wien

T. +43(0)1 489 3961-0

F. +43(0)1 489 3961-7

mail@szabo-scandic.com

www.szabo-scandic.com

[linkedin.com/company/szaboscandic](https://www.linkedin.com/company/szaboscandic) 

PSMC4 monoclonal antibody (M01), clone 3G8

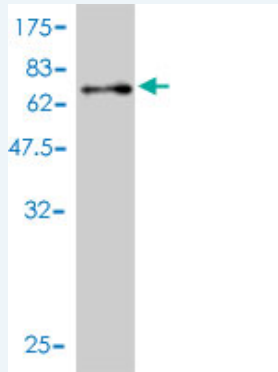
Catalog # : H00005704-M01

規格 : [100 ug]

[List All](#)

Specification

Product Description:	Mouse monoclonal antibody raised against a full length recombinant PSMC4.
Immunogen:	PSMC4 (AAH00343, 1 a.a. ~ 418 a.a) full-length recombinant protein with GST tag. MW of the GST tag alone is 26 KDa.
Sequence:	MEEIGILVEKAQDEIPALSISRPTGLSFLGPEPEDELDLYSRYKKLQQE LEFLEVQEEYIKDEQKNLKKEFLHAQEEVKRIQSIPLVIGQFLEAVDQNTAI VGSTTGSNYYRILSTIDRELLKPNASVALHKHSNALVDVLPPEADSSIMM LTSDQKPDVYADIGGMDIQKQEVREAVELPLTHFELYKQIGIDPPRGVL MYGPPGCGKTMALAKAVAHHTTAAFIRVVGSEFVQKYLGEPRMVRDVF RLAKENAPAIIFIDEIDAIATKRFDAQTGADREVQRILLELLNQMDGFDQNV NVKVMATNRADTLDPALLRPGRLDRKIEFPLPDRRQKRLIFSTITSKMNL SEEVDLEDYVARPKISGADINSICQESGMLAVRENRYVLAKDFEKAYKT VIKKDEQEHEFYK
Host:	Mouse
Reactivity:	Human
Isotype:	IgG2a kappa
Quality Control Testing:	Antibody Reactive Against Recombinant Protein.



Western Blot detection against Immunogen (71.72 KDa) .

Storage Buffer: In 1x PBS, pH 7.4

Storage Instruction: Store at -20°C or lower. Aliquot to avoid repeated freezing and thawing.

MSDS: [Download](#)

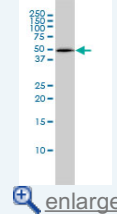
Datasheet: [Download](#)

Applications

Western Blot (Cell lysate)

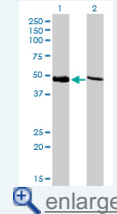
Application Image

Western Blot (Cell lysate)



[enlarge](#)

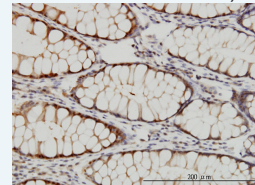
Western Blot (Transfected lysate)



[enlarge](#)

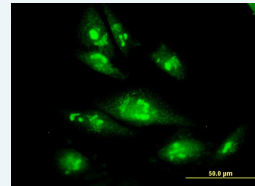
Western Blot (Recombinant protein)

Immunohistochemistry (Formalin/PFA-fixed paraffin-embedded sections)



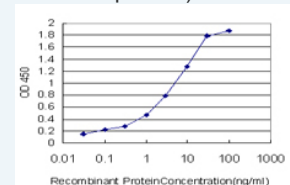
[enlarge](#)

Immunofluorescence



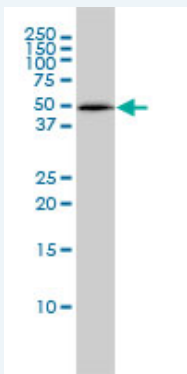
[enlarge](#)

Sandwich ELISA (Recombinant protein)



[enlarge](#)

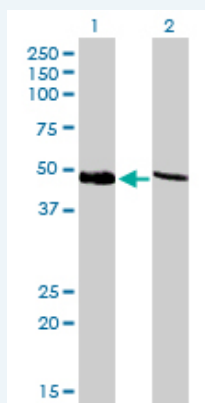
ELISA



PSMC4 monoclonal antibody (M01), clone 3G8 Western Blot analysis of PSMC4 expression in HepG2 (Cat # L019V1).

 [Protocol Download](#)

Western Blot (Transfected lysate)



Western Blot analysis of PSMC4 expression in transfected 293T cell line by PSMC4 monoclonal antibody (M01), clone 3G8.

Lane 1: PSMC4 transfected lysate(47.4 KDa).

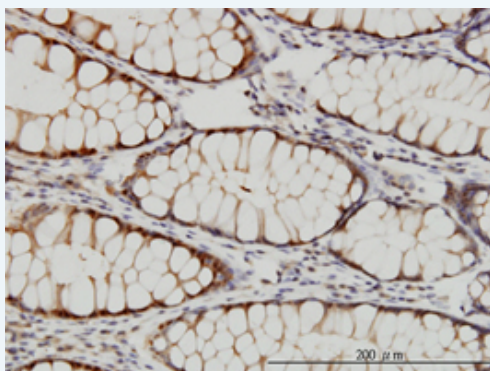
Lane 2: Non-transfected lysate.


 [Protocol Download](#)

Western Blot (Recombinant protein)

 [Protocol Download](#)

Immunohistochemistry (Formalin/PFA-fixed paraffin-embedded sections)

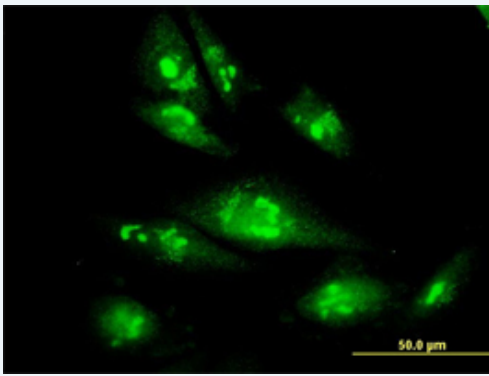


 [enlarge this image](#)

Immunoperoxidase of monoclonal antibody to PSMC4 on formalin-fixed paraffin-embedded human colon. [antibody concentration 3 ug/ml]

 [Protocol Download](#)

Immunofluorescence

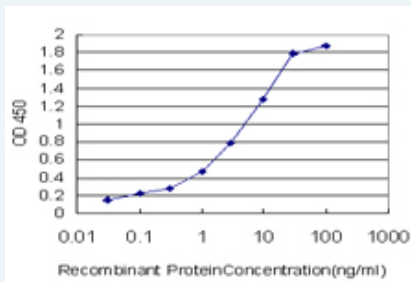


[enlarge this image](#)

Immunofluorescence of monoclonal antibody to PSMC4 on HepG2 cell. [antibody concentration 10 ug/ml]

[Protocol Download](#)

Sandwich ELISA (Recombinant protein)



Detection limit for recombinant GST tagged PSMC4 is approximately 0.03ng/ml as a capture antibody.

[Protocol Download](#)

ELISA

Gene Information

Entrez GeneID: [5704](#)

GeneBank [BC000343](#)

Accession#:

Protein [AAH00343](#)

Accession#:

Gene Name: PSMC4

Gene Alias: MGC13687,MGC23214,MGC8570,MIP224,S6,TBP7

Gene Description: proteasome (prosome, macropain) 26S subunit, ATPase, 4

Omim ID: [602707](#)

Gene Ontology: [Hyperlink](#)

Gene Summary: The 26S proteasome is a multicatalytic proteinase complex with a highly ordered structure composed of 2 complexes, a 20S core and a 19S regulator. The 20S core is composed of 4 rings of 28 non-identical subunits; 2 rings are composed of 7 alpha subunits and 2 rings are composed of 7 beta subunits. The 19S regulator is composed of a base, which contains 6 ATPase subunits and 2 non-ATPase subunits, and a lid, which contains up to 10 non-ATPase subunits. Proteasomes are distributed throughout eukaryotic cells at a high concentration and cleave peptides in an ATP/ubiquitin-dependent process in a non-lysosomal pathway. An essential function of a modified proteasome, the immunoproteasome, is the processing of class I MHC peptides. This gene encodes one of the ATPase subunits, a member of the triple-A family of ATPases which have a chaperone-like activity. This subunit

has been shown to interact with an orphan member of the nuclear hormone receptor superfamily highly expressed in liver, and with gankyrin, a liver oncoprotein. Two transcript variants encoding different isoforms have been identified. [provided by RefSeq

Other MB67 interacting protein, Tat-binding protein 7, protease 26S subunit
Designations: 6, proteasome 26S ATPase subunit 4

Gene Pathway

Proteasome

[服務條款](#) | [隱私權政策](#) | [著作及商標](#) | [網站地圖](#)

©2016 亞諾法生技股份有限公司 Abnova Corporation. 版權所有.