



# SZABO SCANDIC

Part of Europa Biosite

## Produktinformation



Forschungsprodukte & Biochemikalien



Zellkultur & Verbrauchsmaterial



Diagnostik & molekulare Diagnostik



Laborgeräte & Service

Weitere Information auf den folgenden Seiten!  
See the following pages for more information!



### Lieferung & Zahlungsart

siehe unsere [Liefer- und Versandbedingungen](#)

### Zuschläge

- Mindermengenzuschlag
- Trockeneiszuschlag
- Gefahrgutzuschlag
- Expressversand

### SZABO-SCANDIC HandelsgmbH

Quellenstraße 110, A-1100 Wien

T. +43(0)1 489 3961-0

F. +43(0)1 489 3961-7

[mail@szabo-scandic.com](mailto:mail@szabo-scandic.com)

[www.szabo-scandic.com](http://www.szabo-scandic.com)

[linkedin.com/company/szaboscandic](https://www.linkedin.com/company/szaboscandic) 

## PSMC6 monoclonal antibody (M02), clone 2C4

Catalog # : H00005706-M02

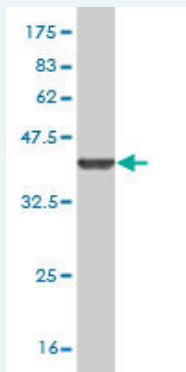
規格 : [ 100 ug ]

[List All](#)

### Specification

<b>Product Description:</b>	Mouse monoclonal antibody raised against a partial recombinant PSMC6.
<b>Immunogen:</b>	PSMC6 (AAH05390, 290 a.a. ~ 389 a.a) partial recombinant protein with GST tag. MW of the GST tag alone is 26 KDa.
<b>Sequence:</b>	LRPGRLLDRKIHIDLPNEQARLDILKIHAGPITKHGEIDYEAIVKLSDFNGAD LRNVCTEAGMFAIRADHDFVQEDFMKAVRKVADSKKLESKLDYKPV
<b>Host:</b>	Mouse
<b>Reactivity:</b>	Human, Mouse, Rat
<b>Isotype:</b>	IgG2a Kappa

**Quality Control Testing:** Antibody Reactive Against Recombinant Protein.



Western Blot detection against Immunogen (36.74 KDa) .

**Storage Buffer:** In 1x PBS, pH 7.4

**Storage Instruction:** Store at -20°C or lower. Aliquot to avoid repeated freezing and thawing.

**MSDS:** [Download](#)

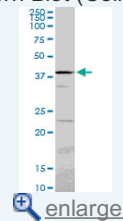
**Datasheet:** [Download](#)

### Applications

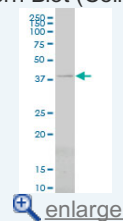
Western Blot (Cell lysate)

### Application Image

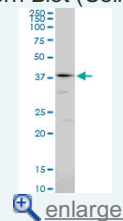
Western Blot (Cell lysate)



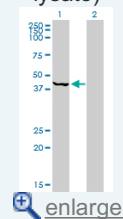
Western Blot (Cell lysate)



Western Blot (Cell lysate)

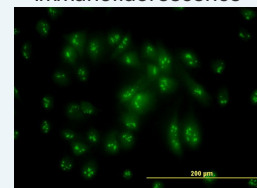


Western Blot (Transfected lysate)



Western Blot (Recombinant protein)

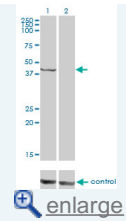
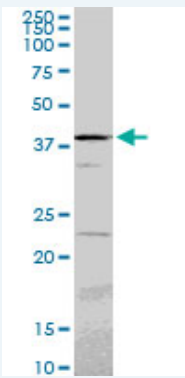
Immunofluorescence



Sandwich ELISA (Recombinant protein)

ELISA

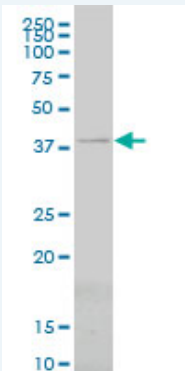
RNAi Knockdown (Antibody validated)



PSMC6 monoclonal antibody (M02), clone 2C4. Western Blot analysis of PSMC6 expression in PC-12(Cat # L012V1 ).

[Protocol Download](#)

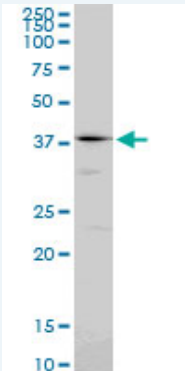
#### Western Blot (Cell lysate)



PSMC6 monoclonal antibody (M02), clone 2C4 Western Blot analysis of PSMC6 expression in HeLa S3 NE ( Cat # L013V3 ).

[Protocol Download](#)

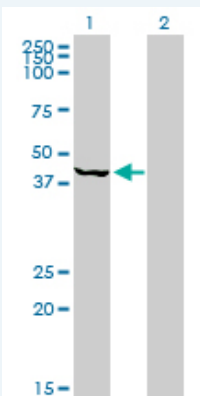
#### Western Blot (Cell lysate)



PSMC6 monoclonal antibody (M02), clone 2C4. Western Blot analysis of PSMC6 expression in NIH/3T3(Cat # L018V1 ).

[Protocol Download](#)

#### Western Blot (Transfected lysate)



Western Blot analysis of PSMC6 expression in transfected 293T cell line by PSMC6 monoclonal antibody (M02), clone 2C4.

Lane 1: PSMC6 transfected lysate(44.2 KDa).  
Lane 2: Non-transfected lysate.

 [Protocol Download](#)

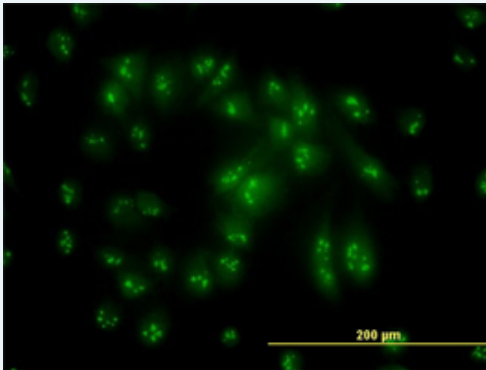
---


### Western Blot (Recombinant protein)

 [Protocol Download](#)

---

### Immunofluorescence



 [enlarge this image](#)

Immunofluorescence of monoclonal antibody to PSMC6 on HeLa cell. [antibody concentration 10 ug/ml]

 [Protocol Download](#)

---

### Sandwich ELISA (Recombinant protein)

Detection limit for recombinant GST tagged PSMC6 is approximately 30ng/ml as a capture antibody.

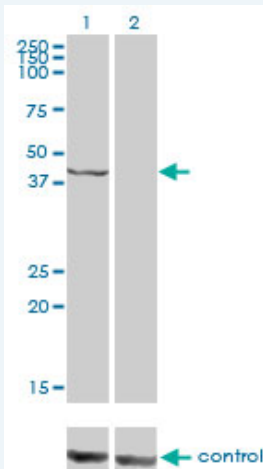
 [Protocol Download](#)

---

### ELISA

---

#### RNAi Knockdown (Antibody validated)



Western blot analysis of PSMC6 over-expressed 293 cell line, cotransfected with PSMC6 Validated Chimera RNAi ( Cat # H00005706-R01V ) (Lane 2) or non-transfected control (Lane 1). Blot probed with PSMC6 monoclonal antibody (M02), clone 2C4 (Cat # H00005706-M02 ). GAPDH ( 36.1 kDa ) used as specificity and loading control.

 [Protocol Download](#)

---

### Gene Information

Entrez GeneID: [5706](#)

GeneBank [BC005390](#)  
Accession#:

Protein [AAH05390](#)  
Accession#:

Gene Name: PSMC6

**Gene Alias:** CADP44,MGC12520,P44,SUG2,p42

**Gene Description:** proteasome (prosome, macropain) 26S subunit, ATPase, 6

**Omim ID:** [602708](#)

**Gene Ontology:** [Hyperlink](#)

**Gene Summary:** The 26S proteasome is a multicatalytic proteinase complex with a highly ordered structure composed of 2 complexes, a 20S core and a 19S regulator. The 20S core is composed of 4 rings of 28 non-identical subunits; 2 rings are composed of 7 alpha subunits and 2 rings are composed of 7 beta subunits. The 19S regulator is composed of a base, which contains 6 ATPase subunits and 2 non-ATPase subunits, and a lid, which contains up to 10 non-ATPase subunits. Proteasomes are distributed throughout eukaryotic cells at a high concentration and cleave peptides in an ATP/ubiquitin-dependent process in a non-lysosomal pathway. An essential function of a modified proteasome, the immunoproteasome, is the processing of class I MHC peptides. This gene encodes one of the ATPase subunits, a member of the triple-A family of ATPases which have a chaperone-like activity. Pseudogenes have been identified on chromosomes 8 and 12. [provided by RefSeq]

**Other Designations:** 26S protease regulatory subunit S10B,conserved ATPase domain protein 44,proteasome 26S ATPase subunit 6,proteasome subunit p42

#### Gene Pathway

[Proteasome](#)

[服務條款](#) | [隱私權政策](#) | [著作及商標](#) | [網站地圖](#)

©2016 亞諾法生技股份有限公司 Abnova Corporation. 版權所有.