



SZABO SCANDIC

Part of Europa Biosite

Produktinformation



Forschungsprodukte & Biochemikalien



Zellkultur & Verbrauchsmaterial



Diagnostik & molekulare Diagnostik



Laborgeräte & Service

Weitere Information auf den folgenden Seiten!
See the following pages for more information!



Lieferung & Zahlungsart

siehe unsere [Liefer- und Versandbedingungen](#)

Zuschläge

- Mindermengenzuschlag
- Trockeneiszuschlag
- Gefahrgutzuschlag
- Expressversand

SZABO-SCANDIC HandelsgmbH

Quellenstraße 110, A-1100 Wien

T. +43(0)1 489 3961-0

F. +43(0)1 489 3961-7

mail@szabo-scandic.com

www.szabo-scandic.com

[linkedin.com/company/szaboscandic](https://www.linkedin.com/company/szaboscandic) 

PSMC6 monoclonal antibody (M04), clone 1E5

Catalog # : H00005706-M04

規格 : [100 ug]

[List All](#)

Specification

Product Description: Mouse monoclonal antibody raised against a full-length recombinant PSMC6.

Immunogen: PSMC6 (AAH05390, 1 a.a. ~ 389 a.a) full-length recombinant protein with GST tag. MW of the GST tag alone is 26 KDa.

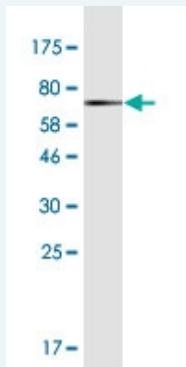
Sequence:
 MADPRDKALQDYRKKLLEHEEIDGRLKELREQLKELTKQYEKSENDLKA
 LQSVGQIVGEVLKQLTEEFIVKATNGPRYVVGCRRLDKSKLKPGTRV
 ALDMTTLTIMRYLPREVDPLVYNMSHEDPGNVSYSEIGGLSEQIRELREVI
 ELPLTNPELRFQRVGIIPKGCCLLYGPPGTGKTLLARAVASQLDCNFLKVV
 SSSIVDKYIGESARLIREMFNYARDHQPCIFMGEIDAIGGRRFSEGT SADR
 EIQR TLMELLNQMDGFDTLHRVKMIMATNRPDTLDPALLRPGRLDRKIHI
 DLPNEQARLDILKIHAGPITKHGEIDYEAVKLSDFNGADLRNVCTEAGM
 FAIRADHDFVQEDFMKAVRKVADSKKLESKLDYKPV

Host: Mouse

Reactivity: Human

Isotype: IgG1 Kappa

Quality Control Testing: Antibody Reactive Against Recombinant Protein.



Western Blot detection against Immunogen (68.31 KDa) .

Storage Buffer: In 1x PBS, pH 7.4

Storage Instruction: Store at -20°C or lower. Aliquot to avoid repeated freezing and thawing.

MSDS: [Download](#)

Datasheet: [Download](#)

Applications

Western Blot (Recombinant protein)

[Protocol Download](#)

ELISA

Application Image

Western Blot (Recombinant protein)

ELISA

Gene Information

Entrez GeneID: [5706](#)

**GeneBank
Accession#:** [BC005390](#)

**Protein
Accession#:** [AAH05390](#)

Gene Name: PSMC6

Gene Alias: CADP44,MGC12520,P44,SUG2,p42

**Gene
Description:** proteasome (prosome, macropain) 26S subunit, ATPase, 6

Omim ID: [602708](#)

Gene Ontology: [Hyperlink](#)

Gene Summary: The 26S proteasome is a multicatalytic proteinase complex with a highly ordered structure composed of 2 complexes, a 20S core and a 19S regulator. The 20S core is composed of 4 rings of 28 non-identical subunits; 2 rings are composed of 7 alpha subunits and 2 rings are composed of 7 beta subunits. The 19S regulator is composed of a base, which contains 6 ATPase subunits and 2 non-ATPase subunits, and a lid, which contains up to 10 non-ATPase subunits. Proteasomes are distributed throughout eukaryotic cells at a high concentration and cleave peptides in an ATP/ubiquitin-dependent process in a non-lysosomal pathway. An essential function of a modified proteasome, the immunoproteasome, is the processing of class I MHC peptides. This gene encodes one of the ATPase subunits, a member of the triple-A family of ATPases which have a chaperone-like activity. Pseudogenes have been identified on chromosomes 8 and 12. [provided by RefSeq]

**Other
Designations:** 26S protease regulatory subunit S10B,conserved ATPase domain protein 44,proteasome 26S ATPase subunit 6,proteasome subunit p42

Gene Pathway

[Proteasome](#)

[服務條款](#) | [隱私權政策](#) | [著作及商標](#) | [網站地圖](#)

©2016 亞諾法生技股份有限公司 Abnova Corporation. 版權所有.