



SZABO SCANDIC

Part of Europa Biosite

Produktinformation



Forschungsprodukte & Biochemikalien



Zellkultur & Verbrauchsmaterial



Diagnostik & molekulare Diagnostik



Laborgeräte & Service

Weitere Information auf den folgenden Seiten!
See the following pages for more information!



Lieferung & Zahlungsart

siehe unsere [Liefer- und Versandbedingungen](#)

Zuschläge

- Mindermengenzuschlag
- Trockeneiszuschlag
- Gefahrgutzuschlag
- Expressversand

SZABO-SCANDIC HandelsgmbH

Quellenstraße 110, A-1100 Wien

T. +43(0)1 489 3961-0

F. +43(0)1 489 3961-7

mail@szabo-scandic.com

www.szabo-scandic.com

[linkedin.com/company/szaboscandic](https://www.linkedin.com/company/szaboscandic) 

PSMD1 polyclonal antibody (A01)

Catalog # : H00005707-A01

規格 : [50 uL]

List All

Specification

Product Description: Mouse polyclonal antibody raised against a partial recombinant PSMD1.

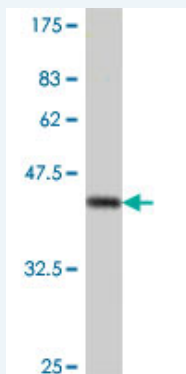
Immunogen: PSMD1 (NP_002798, 1 a.a. ~ 110 a.a) partial recombinant protein with GST tag.

Sequence: MITSAGIISLLDEDEPQLKEFALHKLNAVWVDFWAEISESVDKIEVLYEDE
GFRSRQFAALVASKVFYHLGAFEESLNYALGAGDLFMVNDNSEYVETIIA
KCIDHYTK

Host: Mouse

Reactivity: Human

Quality Control Testing: Antibody Reactive Against Recombinant Protein.



Western Blot detection against Immunogen (38.21 kDa) .

Storage Buffer: 50 % glycerol

Storage Instruction: Store at -20°C or lower. Aliquot to avoid repeated freezing and thawing.

MSDS: [Download](#)

Datasheet: [Download](#)

Applications

Western Blot (Recombinant protein)

[Protocol Download](#)

ELISA

Gene Information

Entrez GeneID: [5707](#)

GeneBank Accession#: [NM_002807](#)

Application Image

Western Blot (Recombinant protein)

ELISA

Protein Accession#: [NP_002798](#)

Gene Name: PSMD1

Gene Alias: MGC133040,MGC133041,P112,Rpn2,S1

Gene Description: proteasome (prosome, macropain) 26S subunit, non-ATPase, 1

Gene Ontology: [Hyperlink](#)

Gene Summary: The 26S proteasome is a multicatalytic proteinase complex with a highly ordered structure composed of 2 complexes, a 20S core and a 19S regulator. The 20S core is composed of 4 rings of 28 non-identical subunits; 2 rings are composed of 7 alpha subunits and 2 rings are composed of 7 beta subunits. The 19S regulator is composed of a base, which contains 6 ATPase subunits and 2 non-ATPase subunits, and a lid, which contains up to 10 non-ATPase subunits. Proteasomes are distributed throughout eukaryotic cells at a high concentration and cleave peptides in an ATP/ubiquitin-dependent process in a non-lysosomal pathway. An essential function of a modified proteasome, the immunoproteasome, is the processing of class I MHC peptides. This gene encodes the largest non-ATPase subunit of the 19S regulator lid, which is responsible for substrate recognition and binding. [provided by RefSeq]

Other Designations: 26S proteasome non-ATPase regulatory subunit 1,26S proteasome regulatory subunit S1,26S proteasome subunit p112,proteasome 26S non-ATPase subunit 1

Gene Pathway

[Proteasome](#)

Related Disease

[Cardiovascular Diseases](#) [Diabetes Mellitus, Type 2](#) [Edema](#) [Tobacco Use Disorder](#)

[服務條款](#) | [隱私權政策](#) | [著作及商標](#) | [網站地圖](#)

©2016 亞諾法生技股份有限公司 Abnova Corporation. 版權所有.