



SZABO SCANDIC

Part of Europa Biosite

Produktinformation



Forschungsprodukte & Biochemikalien



Zellkultur & Verbrauchsmaterial



Diagnostik & molekulare Diagnostik



Laborgeräte & Service

Weitere Information auf den folgenden Seiten!
See the following pages for more information!



Lieferung & Zahlungsart

siehe unsere [Liefer- und Versandbedingungen](#)

Zuschläge

- Mindermengenzuschlag
- Trockeneiszuschlag
- Gefahrgutzuschlag
- Expressversand

SZABO-SCANDIC HandelsgmbH

Quellenstraße 110, A-1100 Wien

T. +43(0)1 489 3961-0

F. +43(0)1 489 3961-7

mail@szabo-scandic.com

www.szabo-scandic.com

[linkedin.com/company/szaboscandic](https://www.linkedin.com/company/szaboscandic) 

PSMD2 polyclonal antibody (A01)

Catalog # : H00005708-A01

規格 : [50 uL]

[List All](#)

Specification

Product Description: Mouse polyclonal antibody raised against a full-length recombinant PSMD2.

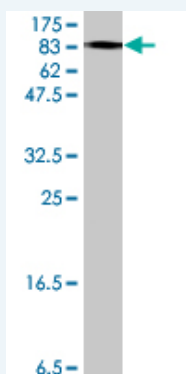
Immunogen: PSMD2 (AAH02368, 1 a.a. ~ 908 a.a) full-length recombinant protein with GST tag.

Sequence:
 MEEGRDKAPVQPQQSPAAPGGTDEKPSGKERRDAGDKDKEQELSE
 EDKQLQDELEMLVERLGEKDTSLYRPALEELRRQIRSSTTSMTSVPKPL
 KFLRPHYGKLKEIYENMAPGENKRFAADIISVLAMTMSGERECLKYRLVG
 SQEELASWGHEYVRHLAGEVAKEWQELDDAEKVQREPLLTLVKEVPYN
 MAHNAEHEACDLLMEIEQVDMLEKDIDENAYAKVCLYLTSCVNYVPEPEN
 SALLRCALGVFRKFSRFPEALRLALMLNDMELVEDIFTCKDWWWQKQM
 AFMLGRHGVFLELSEVVEYEDLTEIMSNVQLNSNFLALARELDIMEPKV
 PDDIYKTHLENNRFGGSGSQVDSARMNLASSFVNGFVNAAFGQDKLLTD
 DGNKWLKYNKDHGMLSAAASLGMILLWDVDGGLTQIDKLYSSEDYIKS
 GALLACGIVNSGVRNECDPALALLSDYVLHNSNTMRLGSIFGLGLAYAGS
 NREDVLTLLLPVMGDSKSSMEVAGVTALACGMIAVGSCNGDVTSTILQTI
 MEKSETELKDTYARWLPPLGLGLNHLGKGEAIEAILAALEVVSEPFRSFAN
 TLVDVCAIYAGSGNVLKVQQLLHICSEHFDSKEKEEDKDKKEKDKDKKE
 APADMGAHQGVAVLGIAMGEEIGAEMALRTFGHLLRYGEPTLRRAVP
 LALALISVSNPRLNILDLSKFSHDADPEVSYNSIFAMGMVSGTNNARLA
 AMLRQLAQYHAKDPNLFMVRLAQGLTHLGKGTLLCPYHSDRQLMSQ
 VAVAGLLTVLVSFLDVRNIIILGKSHYVLYGLVAAMQPRMLVTFDEELRPLP
 VSVRVGQAVDVVGQAGPKTITGFQTHHTPVLLAHGERAELATEEFLPV
 TPILEGFVILRKNPNYDL

Host: Mouse

Reactivity: Human

Quality Control Testing: Antibody Reactive Against Recombinant Protein.



Western Blot detection against Immunogen (125.99 KDa) .

Storage Buffer: 50 % glycerol

Storage Instruction: Store at -20°C or lower. Aliquot to avoid repeated freezing and thawing.

MSDS: [Download](#)

Datasheet: [Download](#)

Application Image

Western Blot (Recombinant protein)

ELISA

Applications

Western Blot (Recombinant protein)

 Protocol Download

ELISA

Gene Information

Entrez GeneID: [5708](#)

GeneBank Accession#: [BC002368](#)

Protein Accession#: [AAH02368](#)

Gene Name: PSMD2

Gene Alias: MGC14274,P97,Rpn1,S2,TRAP2

Gene Description: proteasome (prosome, macropain) 26S subunit, non-ATPase, 2

Omim ID: [606223](#)

Gene Ontology: [Hyperlink](#)

Gene Summary: The 26S proteasome is a multicatalytic proteinase complex with a highly ordered structure composed of 2 complexes, a 20S core and a 19S regulator. The 20S core is composed of 4 rings of 28 non-identical subunits; 2 rings are composed of 7 alpha subunits and 2 rings are composed of 7 beta subunits. The 19S regulator is composed of a base, which contains 6 ATPase subunits and 2 non-ATPase subunits, and a lid, which contains up to 10 non-ATPase subunits. Proteasomes are distributed throughout eukaryotic cells at a high concentration and cleave peptides in an ATP/ubiquitin-dependent process in a non-lysosomal pathway. An essential function of a modified proteasome, the immunoproteasome, is the processing of class I MHC peptides. This gene encodes one of the non-ATPase subunits of the 19S regulator lid. In addition to participation in proteasome function, this subunit may also participate in the TNF signalling pathway since it interacts with the tumor necrosis factor type 1 receptor. A pseudogene has been identified on chromosome 1. [provided by RefSeq]

Other Designations: 26S proteasome non-ATPase regulatory subunit 2,26S proteasome regulatory subunit S2,26S proteasome subunit p97,55.11 protein,TNFR-associated protein 2,proteasome 26S non-ATPase subunit 2,tumor necrosis factor receptor-associated protein 2

Gene Pathway

[Proteasome](#)

Related Disease

[Genetic Predisposition to Disease](#) [Multiple Sclerosis](#)