



# SZABO SCANDIC

Part of Europa Biosite

## Produktinformation



Forschungsprodukte & Biochemikalien



Zellkultur & Verbrauchsmaterial



Diagnostik & molekulare Diagnostik



Laborgeräte & Service

Weitere Information auf den folgenden Seiten!  
See the following pages for more information!



### Lieferung & Zahlungsart

siehe unsere [Liefer- und Versandbedingungen](#)

### Zuschläge

- Mindermengenzuschlag
- Trockeneiszuschlag
- Gefahrgutzuschlag
- Expressversand

### SZABO-SCANDIC HandelsgmbH

Quellenstraße 110, A-1100 Wien

T. +43(0)1 489 3961-0

F. +43(0)1 489 3961-7

[mail@szabo-scandic.com](mailto:mail@szabo-scandic.com)

[www.szabo-scandic.com](http://www.szabo-scandic.com)

[linkedin.com/company/szaboscandic](https://www.linkedin.com/company/szaboscandic) 



## PSMD2 monoclonal antibody (M10), clone 1B4

Catalog # : H00005708-M10

規格 : [ 100 ug ]

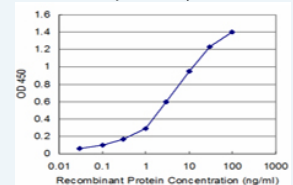
[List All](#)


### Specification

<b>Product Description:</b>	Mouse monoclonal antibody raised against a full-length recombinant PSMD2.
<b>Immunogen:</b>	PSMD2 (AAH02368, 1 a.a. ~ 908 a.a) full-length recombinant protein with GST tag. MW of the GST tag alone is 26 KDa.
<b>Sequence:</b>	MEEGGRDKAPVQPQQSPAAPGGTDEKPSGKERRDAGDKDKEQELSE EDKQLQDELEMLVERLGEKDTSLYRPALEELRRQIRSSTTSMTSVPKPL KFLRPHYGKLKEIYENMAPGENKRF AADIISVLAMTMSGERECLKYRLVG SQEELASWGHEYVRHLAGEVAKEWQELDDAEKVQREPLLTLVKEIMPYN MAHNAEHEACDLLMEIEQVDMLEKDIDENAYAKVCLYLTSCVNYVPEPEN SALLRCALGVFRKFSRFPEALRLALMLNDMELVEDIFTCKDWWWQKQM AFMLGRHGVFLELSEVVEYEDLTEIMSNVQLNSNFLALARELDIMEPKV PDDIYKTHLENNRFGGSGSQVDSARMNLASSFVNGFVNAAFGQDKLLTD DGNKWLYKNKDHGMLSAAASLGMILLWDVDGGLTQIDKLYSSEDIKYS GALLACGIVNSGVRNECDPALALLSDYVLHNSNTMRLGSIFGLGLAYAGS NREDVLTLLL PVMGDSKSSMEVAGVTALACGMIAVGSCNGDVTSTILQTI MEKSETELKDTYARWLP LGLGLNLHGKGEAIEAILAALVSEPF R SFAN TLVDVCA YAGSGNVLKVQQLLHICSEHFD SKEKEEDKDKKEKDKDKKE APADMGAHQGVAVL GIALIAMGEEIGAEMALRTFGHLLRYGEPTLRRAVP LALALISVSNPRLNILD T LSKF SHDADPEVS YNSIFAMGMVSGGTNNARLA AMLRLQAQYHAKDPN NLFMVRLAQGLTHLGKGT L LCPYHSDRQLMSQ VAVAGLLTVLVSFLDVRN IILGKSHYVLYGLVAAMQPRMLVTFDEELRPLP VSVRVGQAVDVVGGQAGPKTITGFQTH TTPVLLAHGERAELATEEFLPV TPILEGFVILRKNPNYDL
<b>Host:</b>	Mouse
<b>Reactivity:</b>	Human
<b>Isotype:</b>	IgG1 Kappa
<b>Quality Control Testing:</b>	Antibody Reactive Against Recombinant Protein.
<b>Storage Buffer:</b>	In 1x PBS, pH 7.4
<b>Storage Instruction:</b>	Store at -20°C or lower. Aliquot to avoid repeated freezing and thawing.
<b>MSDS:</b>	 <a href="#">Download</a>
<b>Datasheet:</b>	 <a href="#">Download</a>

### Application Image

Sandwich ELISA (Recombinant protein)

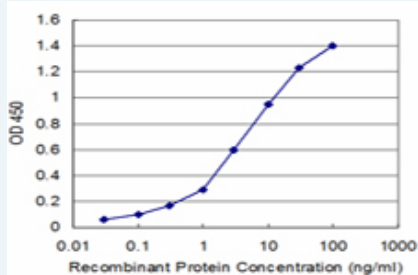


 [enlarge](#)

ELISA

### Applications

Sandwich ELISA (Recombinant protein)



Detection limit for recombinant GST tagged PSMD2 is approximately 0.1ng/ml as a capture antibody.

 [Protocol Download](#)

## ELISA

### Gene Information

Entrez GeneID: [5708](#)

GeneBank [BC002368](#)

Accession#:

Protein [AAH02368](#)

Accession#:

Gene Name: PSMD2

Gene Alias: MGC14274,P97,Rpn1,S2,TRAP2

Gene Description: proteasome (prosome, macropain) 26S subunit, non-ATPase, 2

Omim ID: [606223](#)

Gene Ontology: [Hyperlink](#)

**Gene Summary:** The 26S proteasome is a multicatalytic proteinase complex with a highly ordered structure composed of 2 complexes, a 20S core and a 19S regulator. The 20S core is composed of 4 rings of 28 non-identical subunits; 2 rings are composed of 7 alpha subunits and 2 rings are composed of 7 beta subunits. The 19S regulator is composed of a base, which contains 6 ATPase subunits and 2 non-ATPase subunits, and a lid, which contains up to 10 non-ATPase subunits. Proteasomes are distributed throughout eukaryotic cells at a high concentration and cleave peptides in an ATP/ubiquitin-dependent process in a non-lysosomal pathway. An essential function of a modified proteasome, the immunoproteasome, is the processing of class I MHC peptides. This gene encodes one of the non-ATPase subunits of the 19S regulator lid. In addition to participation in proteasome function, this subunit may also participate in the TNF signalling pathway since it interacts with the tumor necrosis factor type 1 receptor. A pseudogene has been identified on chromosome 1. [provided by RefSeq]

**Other Designations:** 26S proteasome non-ATPase regulatory subunit 2,26S proteasome regulatory subunit S2,26S proteasome subunit p97,55.11 protein,TNFR-associated protein 2,proteasome 26S non-ATPase subunit 2,tumor necrosis factor receptor-associated protein 2

### Gene Pathway

[Proteasome](#)

### Related Disease

[Genetic Predisposition to Disease](#) [Multiple Sclerosis](#)

