



SZABO SCANDIC

Part of Europa Biosite

Produktinformation



Forschungsprodukte & Biochemikalien



Zellkultur & Verbrauchsmaterial



Diagnostik & molekulare Diagnostik



Laborgeräte & Service

Weitere Information auf den folgenden Seiten!
See the following pages for more information!



Lieferung & Zahlungsart

siehe unsere [Liefer- und Versandbedingungen](#)

Zuschläge

- Mindermengenzuschlag
- Trockeneiszuschlag
- Gefahrgutzuschlag
- Expressversand

SZABO-SCANDIC HandelsgmbH

Quellenstraße 110, A-1100 Wien

T. +43(0)1 489 3961-0

F. +43(0)1 489 3961-7

mail@szabo-scandic.com

www.szabo-scandic.com

[linkedin.com/company/szaboscandic](https://www.linkedin.com/company/szaboscandic) 

PSMD2 293T Cell Transient Overexpression Lysate(Denatured)

Catalog # : H00005708-T02

規格 : [100 uL]

[List All](#)

Specification

Transfected Cell Line: 293T

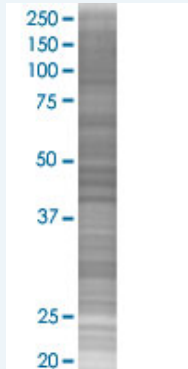
Plasmid: pCMV-PSMD2 full-length

Host: Human

Theoretical MW (kDa): 100.2

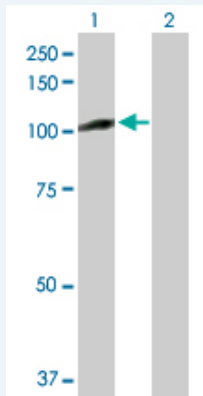
Quality Control Testing: Transient overexpression cell lysate was tested with Anti-PSMD2 antibody ([H00005708-B01P](#)) by Western Blots.

SDS-PAGE Gel



PSMD2 transfected lysate.

Western Blot



Lane 1: PSMD2 transfected lysate (100.20 KDa)

Lane 2: Non-transfected lysate.

Storage Buffer: 1X Sample Buffer (50 mM Tris-HCl, 2% SDS, 10% glycerol, 300 mM 2-mercaptoethanol, 0.01% Bromophenol blue)

Storage Instruction: Store at -80°C. Aliquot to avoid repeated freezing and thawing.

MSDS:  [Download](#)

Applications

Application Image

Western Blot

Western Blot

Gene Information

Entrez GeneID: [5708](#)

GeneBank Accession#: [BC007897](#)

Protein Accession#: [AAH07897.1](#)

Gene Name: PSMD2

Gene Alias: MGC14274,P97,Rpn1,S2,TRAP2

Gene Description: proteasome (prosome, macropain) 26S subunit, non-ATPase, 2

Omim ID: [606223](#)

Gene Ontology: [Hyperlink](#)

Gene Summary: The 26S proteasome is a multicatalytic proteinase complex with a highly ordered structure composed of 2 complexes, a 20S core and a 19S regulator. The 20S core is composed of 4 rings of 28 non-identical subunits; 2 rings are composed of 7 alpha subunits and 2 rings are composed of 7 beta subunits. The 19S regulator is composed of a base, which contains 6 ATPase subunits and 2 non-ATPase subunits, and a lid, which contains up to 10 non-ATPase subunits. Proteasomes are distributed throughout eukaryotic cells at a high concentration and cleave peptides in an ATP/ubiquitin-dependent process in a non-lysosomal pathway. An essential function of a modified proteasome, the immunoproteasome, is the processing of class I MHC peptides. This gene encodes one of the non-ATPase subunits of the 19S regulator lid. In addition to participation in proteasome function, this subunit may also participate in the TNF signalling pathway since it interacts with the tumor necrosis factor type 1 receptor. A pseudogene has been identified on chromosome 1. [provided by RefSeq]

Other Designations: 26S proteasome non-ATPase regulatory subunit 2,26S proteasome regulatory subunit S2,26S proteasome subunit p97,55.11 protein,TNFR-associated protein 2,proteasome 26S non-ATPase subunit 2,tumor necrosis factor receptor-associated protein 2

Gene Pathway

[Proteasome](#)

Related Disease

[Genetic Predisposition to Disease](#) [Multiple Sclerosis](#)