



# SZABO SCANDIC

Part of Europa Biosite

## Produktinformation



Forschungsprodukte & Biochemikalien



Zellkultur & Verbrauchsmaterial



Diagnostik & molekulare Diagnostik



Laborgeräte & Service

Weitere Information auf den folgenden Seiten!  
See the following pages for more information!



### Lieferung & Zahlungsart

siehe unsere [Liefer- und Versandbedingungen](#)

### Zuschläge

- Mindermengenzuschlag
- Trockeneiszuschlag
- Gefahrgutzuschlag
- Expressversand

### SZABO-SCANDIC HandelsgmbH

Quellenstraße 110, A-1100 Wien

T. +43(0)1 489 3961-0

F. +43(0)1 489 3961-7

[mail@szabo-scandic.com](mailto:mail@szabo-scandic.com)

[www.szabo-scandic.com](http://www.szabo-scandic.com)

[linkedin.com/company/szaboscandic](https://www.linkedin.com/company/szaboscandic) 



**PSMD4 purified MaxPab mouse polyclonal antibody (B01P)** MaxPab®

Catalog # : H00005710-B01P

規格 : [ 50 ug ]

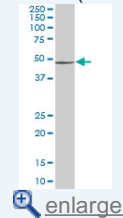
List All

**Specification**

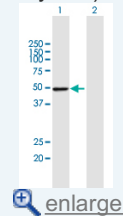
<b>Product Description:</b>	Mouse polyclonal antibody raised against a full-length human PSMD4 protein.
<b>Immunogen:</b>	PSMD4 (NP_002801.1, 1 a.a. ~ 377 a.a) full-length human protein.
<b>Sequence:</b>	MVLESTMVCVDNSEYMRNGDFLPTRLQAQQDAVNIVCHSKTRSNPENN VGLITLANDCEVLTTLTPDTGRILSKLHTVQPKGKITFCTGIRVAHLALKHR QGKNHKMRIIAFVGSPVEDNEKDLVKLAKRLKKEKVNVDIINFGEEEVNT KLTAQVNTLNGKDGTVGSHLVTVPPGSLADALISSPILAGEGGAMLGLGA SDFEFGVDPADPELALALRVSMEEQRQRQEEEEARRAAAAASAAEAGIAT TGTEDSDALLKMTISQQEFGRTPGLPDLSSMTEEEQIAYAMQMSLQGA EFGQAESADIDASSAMDTSEPAKEEDDYDVMQDPEFLQSVLENLPGVDP NNEAIRNAMGSLASQATKDGKKDKKKEEDKK
<b>Host:</b>	Mouse
<b>Reactivity:</b>	Human
<b>Quality Control Testing:</b>	Antibody reactive against mammalian transfected lysate.
<b>Storage Buffer:</b>	In 1x PBS, pH 7.4
<b>Storage Instruction:</b>	Store at -20°C or lower. Aliquot to avoid repeated freezing and thawing.
<b>MSDS:</b>	 <a href="#">Download</a>
<b>Datasheet:</b>	 <a href="#">Download</a>

**Application Image**

Western Blot (Cell lysate)



Western Blot (Transfected lysate)

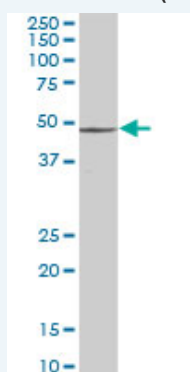


**Publication Reference**

1. [Glatiramer Acetate and Nanny Proteins Restrict Access of the Multiple Sclerosis Autoantigen Myelin Basic Protein to the 26S Proteasome.](#)  
Kuzina E, Kudriaeva A, Smirnov I, Dubina MV, Gabibov A, Belogurov A Jr Biomed Res Int. 2014;2014:926394. doi: 10.1155/2014/926394. Epub 2014 Sep 8.

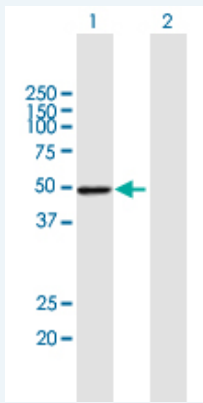
**Applications**

Western Blot (Cell lysate)



PSMD4 MaxPab polyclonal antibody. Western Blot analysis of PSMD4 expression in K-562.

**Western Blot (Transfected lysate)**



Western Blot analysis of PSMD4 expression in transfected 293T cell line ([H00005710-T01](#)) by PSMD4 MaxPab polyclonal antibody.

Lane 1: PSMD4 transfected lysate(41.47 KDa).  
Lane 2: Non-transfected lysate.

**Gene Information**

**Entrez GeneID:** [5710](#)

**GeneBank Accession#:** [NM\\_002810.2](#)

**Protein Accession#:** [NP\\_002801.1](#)

**Gene Name:** PSMD4

**Gene Alias:** AF,AF-1,ASF,MCB1,Rpn10,S5A,pUB-R5

**Gene Description:** proteasome (prosome, macropain) 26S subunit, non-ATPase, 4

**Omim ID:** [601648](#)

**Gene Ontology:** [Hyperlink](#)

**Gene Summary:** The 26S proteasome is a multicatalytic proteinase complex with a highly ordered structure composed of 2 complexes, a 20S core and a 19S regulator. The 20S core is composed of 4 rings of 28 non-identical subunits; 2 rings are composed of 7 alpha subunits and 2 rings are composed of 7 beta subunits. The 19S regulator is composed of a base, which contains 6 ATPase subunits and 2 non-ATPase subunits, and a lid, which contains up to 10 non-ATPase subunits. Proteasomes are distributed throughout eukaryotic cells at a high concentration and cleave peptides in an ATP/ubiquitin-dependent process in a non-lysosomal pathway. An essential function of a modified proteasome, the immunoproteasome, is the processing of class I MHC peptides. This gene encodes one of the non-ATPase subunits of the 19S regulator lid. Pseudogenes have been identified on chromosomes 10 and 21. [provided by RefSeq]

**Other Designations:** 26S protease subunit S5a,26S proteasome non-ATPase regulatory subunit  
4,OTTHUMP00000014286,OTTHUMP00000059963,S5a/antiseecretory factor protein,angiocidin,antiseecretory factor 1,multiubiquitin chain binding protein,proteasome 26S non-ATPase subunit 4

**Gene Pathway**

