



SZABO SCANDIC

Part of Europa Biosite

Produktinformation



Forschungsprodukte & Biochemikalien



Zellkultur & Verbrauchsmaterial



Diagnostik & molekulare Diagnostik



Laborgeräte & Service

Weitere Information auf den folgenden Seiten!
See the following pages for more information!



Lieferung & Zahlungsart

siehe unsere [Liefer- und Versandbedingungen](#)

Zuschläge

- Mindermengenzuschlag
- Trockeneiszuschlag
- Gefahrgutzuschlag
- Expressversand

SZABO-SCANDIC HandelsgmbH

Quellenstraße 110, A-1100 Wien

T. +43(0)1 489 3961-0

F. +43(0)1 489 3961-7

mail@szabo-scandic.com

www.szabo-scandic.com

[linkedin.com/company/szaboscandic](https://www.linkedin.com/company/szaboscandic) 

PSMD5 MaxPab mouse polyclonal antibody (B01) MaxPab®

Catalog # : H00005711-B01

規格 : [50 uL]

[List All](#)

Specification

Product Description: Mouse polyclonal antibody raised against a full-length human PSMD5 protein.

Immunogen: PSMD5 (NP_005038.1, 1 a.a. ~ 504 a.a) full-length human protein.

Sequence:
 MAAQALALLREVARLEAPLEELRALHSLVLAQVPLNELRQAAELRLGPL
 FSLLENHREKTTLCVSILERLLQAMEPVHVARNLRVDLQRGLIHPDDSV
 KILTLSQIGRIVENSDAVTEILNNAELLKQIVYCIGGENLSVAKAAIKLSRISL
 TQAGLEALFESNLLDDLKSVMKTNDIVRYRYVELIIEISSVSPELNYCTTS
 GLVTQLLRELTGEDVLVRATCIEMVTSLAYTHHGRQYLAQEGVIDQISNII
 VGADSDPFSSFYLPGFVKFFGNLAVMDSPQICERYPIFVEKVFEMIESQ
 DPTMIGVAVDTVGILGSNVEGKQVLQKTGTRFERLLMRIGHQSKNAPVEL
 KIRCLDAISSLLYLPPEQQTDDLRLMTESWFSRLSRDPELEFRGISSQPF
 PELHCAALKVFTAIANQPWAQKLMFNSPGFVEYVVDRSVEHDKASKDAK
 YELVKALANSKTAIEIFGNPNYLRRLRYLSEGPYYVKPVSTTAVEGAE

Host: Mouse

Reactivity: Human

Quality Control Testing: Antibody reactive against mammalian transfected lysate.

Storage Buffer: No additive

Storage Instruction: Store at -20°C or lower. Aliquot to avoid repeated freezing and thawing.

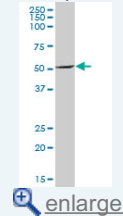
Note: For IHC and IF applications, antibody purification with Protein A will be needed prior to use.

MSDS: [Download](#)

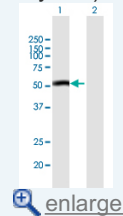
Datasheet: [Download](#)

Application Image

Western Blot (Tissue lysate)

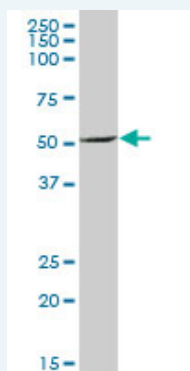


Western Blot (Transfected lysate)



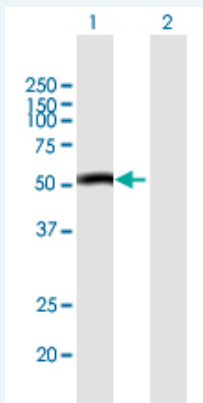
Applications

Western Blot (Tissue lysate)



PSMD5 MaxPab polyclonal antibody. Western Blot analysis of PSMD5 expression in human spleen.

Western Blot (Transfected lysate)



Western Blot analysis of PSMD5 expression in transfected 293T cell line (H00005711-T01) by PSMD5 MaxPab polyclonal antibody.

Lane 1: PSMD5 transfected lysate(55.44 KDa).

Lane 2: Non-transfected lysate.

Gene Information

Entrez GeneID: [5711](#)

GeneBank Accession#: [NM_005047.2](#)

Protein Accession#: [NP_005038.1](#)

Gene Name: PSMD5

Gene Alias: KIAA0072,MGC23145,S5B

Gene Description: proteasome (prosome, macropain) 26S subunit, non-ATPase, 5

Omim ID: [604452](#)

Gene Ontology: [Hyperlink](#)

Gene Summary: The 26S proteasome is a multicatalytic proteinase complex with a highly ordered structure composed of 2 complexes, a 20S core and a 19S regulator. The 20S core is composed of 4 rings of 28 non-identical subunits; 2 rings are composed of 7 alpha subunits and 2 rings are composed of 7 beta subunits. The 19S regulator is composed of a base, which contains 6 ATPase subunits and 2 non-ATPase subunits, and a lid, which contains up to 10 non-ATPase subunits. Proteasomes are distributed throughout eukaryotic cells at a high concentration and cleave peptides in an ATP/ubiquitin-dependent process in a non-lysosomal pathway. An essential function of a modified proteasome, the immunoproteasome, is the processing of class I MHC peptides. This gene encodes a non-ATPase subunit of the 19S regulator base. [provided by RefSeq]

Other Designations: 26S protease subunit S5 basic,26S proteasome non-ATPase regulatory subunit 5,26S proteasome subunit S5B,OTTHUMP00000021990,proteasome 26S non-ATPase subunit 5

