



# SZABO SCANDIC

Part of Europa Biosite

## Produktinformation



Forschungsprodukte & Biochemikalien



Zellkultur & Verbrauchsmaterial



Diagnostik & molekulare Diagnostik



Laborgeräte & Service

Weitere Information auf den folgenden Seiten!  
See the following pages for more information!



### Lieferung & Zahlungsart

siehe unsere [Liefer- und Versandbedingungen](#)

### Zuschläge

- Mindermengenzuschlag
- Trockeneiszuschlag
- Gefahrgutzuschlag
- Expressversand

### SZABO-SCANDIC HandelsgmbH

Quellenstraße 110, A-1100 Wien

T. +43(0)1 489 3961-0

F. +43(0)1 489 3961-7

[mail@szabo-scandic.com](mailto:mail@szabo-scandic.com)

[www.szabo-scandic.com](http://www.szabo-scandic.com)

[linkedin.com/company/szaboscandic](https://www.linkedin.com/company/szaboscandic) 



**PSMD5 purified MaxPab mouse polyclonal antibody (B01P)** MaxPab®

Catalog # : H00005711-B01P

規格 : [ 50 ug ]

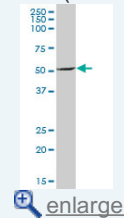
[List All](#)

**Specification**

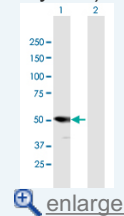
<b>Product Description:</b>	Mouse polyclonal antibody raised against a full-length human PSMD5 protein.
<b>Immunogen:</b>	PSMD5 (NP_005038.1, 1 a.a. ~ 504 a.a) full-length human protein.
<b>Sequence:</b>	MAAQALALLREVARLEAPLEELRALHSQLQAVPLNELRQQAELRLGPL FLLNENHREKTTLCVSILERLLQAMEPVHVARNLRVDLQRGLIHPDDSV KILTLSQIGRIVENSDAVTEILNNAELLKQIVYCIGGENLSVAKAAIKLSRISL TQAGLEALFESNLLDDLKSMKTNDIVRYRYVELIIEISSVSPELNYCTTS GLVTQLLRELTGEDVLRATCIEMVTSLAYTHHGRQYLAQEGVIDQISNII VGADSDPFSSFYLPGFVKFFGNLAVMDSPQQICERYPIFVEKVFEMIESQ DPTMIGVAVDTVGILGSNVEGKQVLQKTGTRFERLLMRIGHQSKNAPVEL KIRCLDAISSLLYLPPEQQTDDLRLMTESWFSRLSRDPELFRGISSQPF PELHCAALKVFTAIANQPWAQKLMFNTPGFVEYVVDRSVEHDKASKDAK YELVKALANSKTAIEIFGNPNYLRLRYLSEGPYYVKPVSTTAVEGAE
<b>Host:</b>	Mouse
<b>Reactivity:</b>	Human
<b>Quality Control Testing:</b>	Antibody reactive against mammalian transfected lysate.
<b>Storage Buffer:</b>	In 1x PBS, pH 7.4
<b>Storage Instruction:</b>	Store at -20°C or lower. Aliquot to avoid repeated freezing and thawing.
<b>MSDS:</b>	 <a href="#">Download</a>
<b>Datasheet:</b>	 <a href="#">Download</a>

**Application Image**

Western Blot (Tissue lysate)

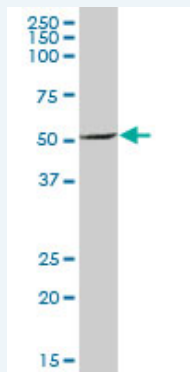


Western Blot (Transfected lysate)




**Applications**

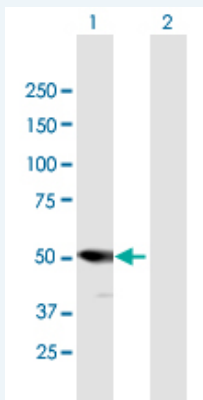
Western Blot (Tissue lysate)



PSMD5 MaxPab polyclonal antibody. Western Blot analysis of PSMD5 expression in human spleen.

 [Protocol Download](#)

Western Blot (Transfected lysate)



Western Blot analysis of PSMD5 expression in transfected 293T cell line ([H00005711-T01](#)) by PSMD5 MaxPab polyclonal antibody.

Lane 1: PSMD5 transfected lysate(55.44 KDa).  
Lane 2: Non-transfected lysate.

 [Protocol Download](#)

## Gene Information

**Entrez GeneID:** [5711](#)

**GeneBank Accession#:** [NM\\_005047.2](#)

**Protein Accession#:** [NP\\_005038.1](#)

**Gene Name:** PSMD5

**Gene Alias:** KIAA0072,MGC23145,S5B

**Gene Description:** proteasome (prosome, macropain) 26S subunit, non-ATPase, 5

**Omim ID:** [604452](#)

**Gene Ontology:** [Hyperlink](#)

**Gene Summary:** The 26S proteasome is a multicatalytic proteinase complex with a highly ordered structure composed of 2 complexes, a 20S core and a 19S regulator. The 20S core is composed of 4 rings of 28 non-identical subunits; 2 rings are composed of 7 alpha subunits and 2 rings are composed of 7 beta subunits. The 19S regulator is composed of a base, which contains 6 ATPase subunits and 2 non-ATPase subunits, and a lid, which contains up to 10 non-ATPase subunits. Proteasomes are distributed throughout eukaryotic cells at a high concentration and cleave peptides in an ATP/ubiquitin-dependent process in a non-lysosomal pathway. An essential function of a modified proteasome, the immunoproteasome, is the processing of class I MHC peptides. This gene encodes a non-ATPase subunit of the 19S regulator base.  
[provided by RefSeq]

**Other Designations:** 26S protease subunit S5 basic,26S proteasome non-ATPase regulatory subunit 5,26S proteasome subunit S5B,OTTHUMP00000021990,proteasome 26S non-ATPase subunit 5