



# SZABO SCANDIC

Part of Europa Biosite

## Produktinformation



Forschungsprodukte & Biochemikalien



Zellkultur & Verbrauchsmaterial



Diagnostik & molekulare Diagnostik



Laborgeräte & Service

Weitere Information auf den folgenden Seiten!  
See the following pages for more information!



### Lieferung & Zahlungsart

siehe unsere [Liefer- und Versandbedingungen](#)

### Zuschläge

- Mindermengenzuschlag
- Trockeneiszuschlag
- Gefahrgutzuschlag
- Expressversand

### SZABO-SCANDIC HandelsgmbH

Quellenstraße 110, A-1100 Wien

T. +43(0)1 489 3961-0

F. +43(0)1 489 3961-7

[mail@szabo-scandic.com](mailto:mail@szabo-scandic.com)

[www.szabo-scandic.com](http://www.szabo-scandic.com)

[linkedin.com/company/szaboscandic](https://www.linkedin.com/company/szaboscandic) 



**PSMD5 purified MaxPab rabbit polyclonal antibody (D01P)** MaxPab®

Catalog # : H00005711-D01P

規格 : [ 100 ug ]

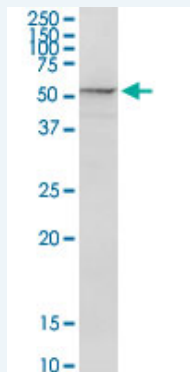
List All

**Specification**


<b>Product Description:</b>	Rabbit polyclonal antibody raised against a full-length human PSMD5 protein.
<b>Immunogen:</b>	PSMD5 (NP_005038.1, 1 a.a. ~ 504 a.a) full-length human protein.
<b>Sequence:</b>	MAAQALALLREVARLEAPLEELRALHSQLQAVPLNELRQAAELRLGPL FLLNENHREKTTLCVSILERLLQAMEPVHVARNLRVDLQRGLIHPDDSV KILTLSQIGRIVENSdavTEILNNAELLKQIVYCIGGENLSVAKAAIKLSRISL TQAGLEALFESNLLDDLKSMVKTNDIVRYRYVELIIEISSVSPELNYCTTS GLVTQLLRELTGEDVLVRATCIEMVTSLAYTHHGRQYLAQEGVIDQISNII VGADSDPFSSFYLPGFVKFFGNLAVMDSPQICERYPIFVEKVFEMIESQ DPTMIGVAVDTVGILGSNVEGKQVLQKTGTRFERLLMRIGHQSKNAPVEL KIRCLDAISSLLYLPPEQQTDDLRLMTESWFSSSRDPLELFRGISSQPF PELHCAALKVFTAIANQPWAQKLMFNTPGFVEYVVDRSVEHDKASKDAK YELVKALANSKTAIEIFGNPNYLRRLTYLSEGPYYVKPVSTTAVEGAE
<b>Host:</b>	Rabbit
<b>Reactivity:</b>	Human, Mouse, Rat
<b>Quality Control Testing:</b>	Antibody reactive against mammalian transfected lysate.
<b>Storage Buffer:</b>	In 1x PBS, pH 7.4
<b>Storage Instruction:</b>	Store at -20°C or lower. Aliquot to avoid repeated freezing and thawing.
<b>MSDS:</b>	 <a href="#">Download</a>
<b>Datasheet:</b>	 <a href="#">Download</a>

**Applications**

**Western Blot (Tissue lysate)**



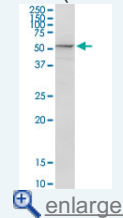
PSMD5 MaxPab rabbit polyclonal antibody. Western Blot analysis of PSMD5 expression in human stomach.

 [Protocol Download](#)

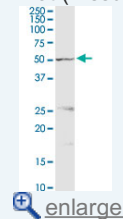
**Western Blot (Tissue lysate)**

**Application Image**

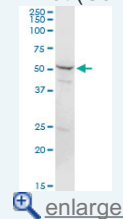
Western Blot (Tissue lysate)



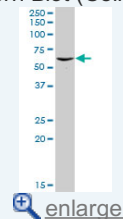
Western Blot (Tissue lysate)



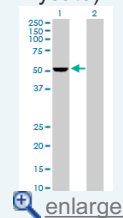
Western Blot (Cell lysate)

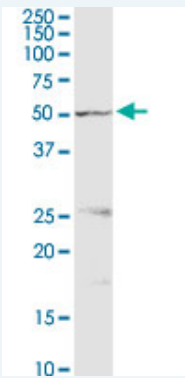


Western Blot (Cell lysate)



Western Blot (Transfected lysate)

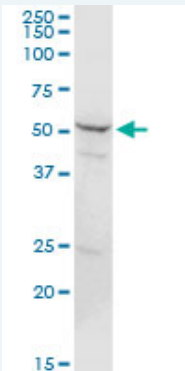




PSMD5 MaxPab rabbit polyclonal antibody. Western Blot analysis of PSMD5 expression in mouse spleen.

 [Protocol Download](#)

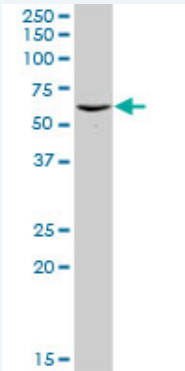
#### Western Blot (Cell lysate)



PSMD5 MaxPab rabbit polyclonal antibody. Western Blot analysis of PSMD5 expression in HeLa.

 [Protocol Download](#)

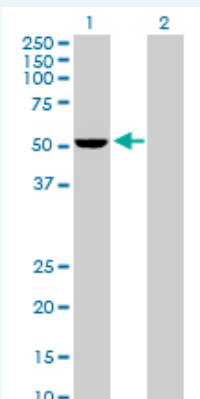
#### Western Blot (Cell lysate)



PSMD5 MaxPab rabbit polyclonal antibody. Western Blot analysis of PSMD5 expression in PC-12.

 [Protocol Download](#)

#### Western Blot (Transfected lysate)



Western Blot analysis of PSMD5 expression in transfected 293T cell line (H00005711-T01) by PSMD5 MaxPab polyclonal antibody.

Lane 1: PSMD5 transfected lysate(56.20 KDa).  
Lane 2: Non-transfected lysate.

 [Protocol Download](#)

---

## Gene Information

---

**Entrez GeneID:** [5711](#)

---

**GeneBank  
Accession#:** [NM\\_005047.2](#)

---

**Protein  
Accession#:** [NP\\_005038.1](#)

---

**Gene Name:** PSMD5

---

**Gene Alias:** KIAA0072,MGC23145,S5B

---

**Gene  
Description:** proteasome (prosome, macropain) 26S subunit, non-ATPase, 5

---

**Omim ID:** [604452](#)

---

**Gene Ontology:** [Hyperlink](#)

---

**Gene Summary:** The 26S proteasome is a multicatalytic proteinase complex with a highly ordered structure composed of 2 complexes, a 20S core and a 19S regulator. The 20S core is composed of 4 rings of 28 non-identical subunits; 2 rings are composed of 7 alpha subunits and 2 rings are composed of 7 beta subunits. The 19S regulator is composed of a base, which contains 6 ATPase subunits and 2 non-ATPase subunits, and a lid, which contains up to 10 non-ATPase subunits. Proteasomes are distributed throughout eukaryotic cells at a high concentration and cleave peptides in an ATP/ubiquitin-dependent process in a non-lysosomal pathway. An essential function of a modified proteasome, the immunoproteasome, is the processing of class I MHC peptides. This gene encodes a non-ATPase subunit of the 19S regulator base. [provided by RefSeq]

---

**Other  
Designations:** 26S protease subunit S5 basic,26S proteasome non-ATPase regulatory subunit 5,26S proteasome subunit S5B,OTTHUMP00000021990,proteasome 26S non-ATPase subunit 5

---

---

[服務條款](#) | [隱私權政策](#) | [著作及商標](#) | [網站地圖](#)

©2016 亞諾法生技股份有限公司 Abnova Corporation. 版權所有.