



SZABO SCANDIC

Part of Europa Biosite

Produktinformation



Forschungsprodukte & Biochemikalien



Zellkultur & Verbrauchsmaterial



Diagnostik & molekulare Diagnostik



Laborgeräte & Service

Weitere Information auf den folgenden Seiten!
See the following pages for more information!



Lieferung & Zahlungsart

siehe unsere [Liefer- und Versandbedingungen](#)

Zuschläge

- Mindermengenzuschlag
- Trockeneiszuschlag
- Gefahrgutzuschlag
- Expressversand

SZABO-SCANDIC HandelsgmbH

Quellenstraße 110, A-1100 Wien

T. +43(0)1 489 3961-0

F. +43(0)1 489 3961-7

mail@szabo-scandic.com

www.szabo-scandic.com

[linkedin.com/company/szaboscandic](https://www.linkedin.com/company/szaboscandic) 

PSMD5 monoclonal antibody (M17), clone 1H7

Catalog # : H00005711-M17

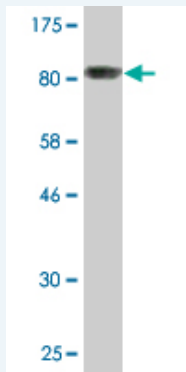
規格 : [100 ug]

[List All](#)

Specification

Product Description:	Mouse monoclonal antibody raised against a full-length recombinant PSMD5.
Immunogen:	PSMD5 (AAH14478.1, 1 a.a. ~ 504 a.a) full-length recombinant protein with GST tag. MW of the GST tag alone is 26 KDa.
Sequence:	MAAQUALALLREVARLEAPLEELRALHSQLQAVPLNELRQQAAELRLGPL FSLLENHREKTTLCVSLERLLQAMEPVHVARNLRVDLQRGLIHPDDSV KILTLSQIGRIVENS DAVTEILNNAELLKQIVYICIGGENLSVAKAAIKSLSRISL TQAGLEALFESNLLDDLKSVMKTN DIVRYRVYELIIEISSVSPELNYCTTS GLVTQLLRELTGEDVLRATCIEMVTS LAYTHHGRQYLAQEGVIDQISNII VGADSDPFSSFYLPGFVKFFGNLAVMDSPQQICERYPIFVEKVFEMIESQ DPTMIGVAVDTVGILGSNVEGKQVLQKTGTRFERLLMRIGHQSKNAPVEL KIRCLDAISSLLYLPPEQQTDDLRLMTESWFS SLSRDPLELFRGISSQPF PELHCAALKVFTAIANQPWAQKLMFN SPGFVEYVVD RSV EHDKASKDAK YELVKALANSKTI AEIFGNPNYLRRLR TYLSEGPYYVKPVSTTAVEGAE
Host:	Mouse
Reactivity:	Human
Isotype:	IgG1 Kappa

Quality Control Testing: Antibody Reactive Against Recombinant Protein.



Western Blot detection against Immunogen (80.96 KDa) .

Storage Buffer: In 1x PBS, pH 7.4

Storage Instruction: Store at -20°C or lower. Aliquot to avoid repeated freezing and thawing.

MSDS: [Download](#)

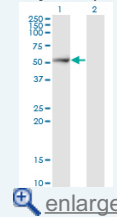
Datasheet: [Download](#)

Applications

Western Blot (Transfected lysate)

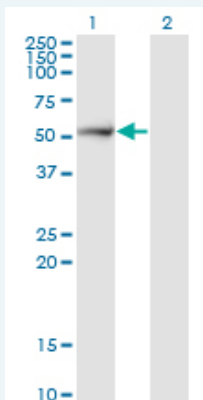
Application Image

Western Blot (Transfected lysate)



Western Blot (Recombinant protein)

ELISA



Western Blot analysis of PSMD5 expression in transfected 293T cell line by PSMD5 monoclonal antibody (M17), clone 1H7.

Lane 1: PSMD5 transfected lysate (Predicted MW: 56.2 KDa).
Lane 2: Non-transfected lysate.

 [Protocol Download](#)

Western Blot (Recombinant protein)

 [Protocol Download](#)

ELISA

Gene Information

Entrez GeneID: [5711](#)

GeneBank [BC014478](#)
Accession#:

Protein [AAH14478.1](#)
Accession#:

Gene Name: PSMD5

Gene Alias: KIAA0072,MGC23145,S5B

Gene Description: proteasome (prosome, macropain) 26S subunit, non-ATPase, 5

Omim ID: [604452](#)

Gene Ontology: [Hyperlink](#)

Gene Summary: The 26S proteasome is a multicatalytic proteinase complex with a highly ordered structure composed of 2 complexes, a 20S core and a 19S regulator. The 20S core is composed of 4 rings of 28 non-identical subunits; 2 rings are composed of 7 alpha subunits and 2 rings are composed of 7 beta subunits. The 19S regulator is composed of a base, which contains 6 ATPase subunits and 2 non-ATPase subunits, and a lid, which contains up to 10 non-ATPase subunits. Proteasomes are distributed throughout eukaryotic cells at a high concentration and cleave peptides in an ATP/ubiquitin-dependent process in a non-lysosomal pathway. An essential function of a modified proteasome, the immunoproteasome, is the processing of class I MHC peptides. This gene encodes a non-ATPase subunit of the 19S regulator base.
[provided by RefSeq]

Other Designations: 26S protease subunit S5 basic,26S proteasome non-ATPase regulatory subunit 5,26S proteasome subunit S5B,OTTHUMP00000021990,proteasome 26S non-ATPase subunit 5

