



SZABO SCANDIC

Part of Europa Biosite

Produktinformation



Forschungsprodukte & Biochemikalien



Zellkultur & Verbrauchsmaterial



Diagnostik & molekulare Diagnostik



Laborgeräte & Service

Weitere Information auf den folgenden Seiten!
See the following pages for more information!



Lieferung & Zahlungsart

siehe unsere [Liefer- und Versandbedingungen](#)

Zuschläge

- Mindermengenzuschlag
- Trockeneiszuschlag
- Gefahrgutzuschlag
- Expressversand

SZABO-SCANDIC HandelsgmbH

Quellenstraße 110, A-1100 Wien

T. +43(0)1 489 3961-0

F. +43(0)1 489 3961-7

mail@szabo-scandic.com

www.szabo-scandic.com

[linkedin.com/company/szaboscandic](https://www.linkedin.com/company/szaboscandic) 

PSMD7 monoclonal antibody (M02), clone 2E5

Catalog # : H00005713-M02

規格 : [100 ug]

[List All](#)

Specification

Product Description: Mouse monoclonal antibody raised against a full-length recombinant PSMD7.

Immunogen: PSMD7 (AAH12606, 1 a.a. ~ 324 a.a) full-length recombinant protein with GST tag. MW of the GST tag alone is 26 KDa.

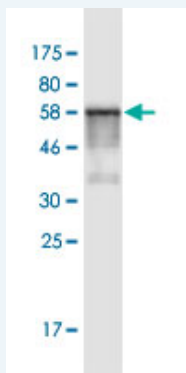
Sequence:
 MPELAVQKVVVHPLVLLSVDHFNIRIGKVGNGKRWVGVLLGSWQKKVLD
 VSNSFAVPFDEDDKDDSWFLDHDYLENMYGMFKKVNARERIVGWYHT
 GPKLHKNDIAINELMKRYCPNSVLVIDVKPKDLGLPTEAYISVEEVHDDGT
 PTSKTFEHVTSEIGAEAEVGVVEHLLRDIKDTTVGTLRQITNQVHGLK
 GLNSKLLDIRSYLEK VATGKLPINHQIYQLQDVFNLLPDVSLQEFVKAFYL
 KTNDQMWWVYLASLIRSVVALHNLINNKIADRDAEKKEGQEKEESKKDRKE
 DKEKDKKEKSDVKKEEKKEK

Host: Mouse

Reactivity: Human

Isotype: IgG1 Kappa

Quality Control Testing: Antibody Reactive Against Recombinant Protein.



Western Blot detection against Immunogen (61.38 KDa) .

Storage Buffer: In 1x PBS, pH 7.4

Storage Instruction: Store at -20°C or lower. Aliquot to avoid repeated freezing and thawing.

MSDS: [Download](#)

Datasheet: [Download](#)

Applications

Western Blot (Recombinant protein)

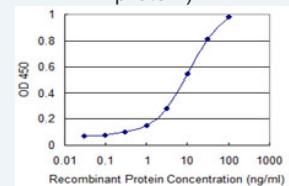
[Protocol Download](#)

Sandwich ELISA (Recombinant protein)

Application Image

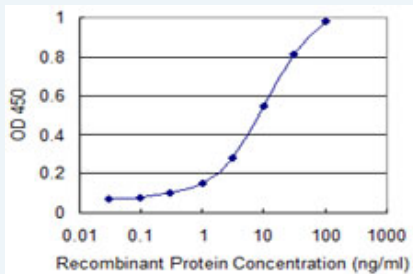
Western Blot (Recombinant protein)

Sandwich ELISA (Recombinant protein)



[enlarge](#)

ELISA



Detection limit for recombinant GST tagged PSMD7 is 0.1 ng/ml as a capture antibody.

 [Protocol Download](#)

ELISA

Gene Information

Entrez GeneID: [5713](#)

GeneBank [BC012606](#)

Accession#:

Protein [AAH12606](#)

Accession#:

Gene Name: PSMD7

Gene Alias: MOV34,P40,Rpn8,S12

Gene Description: proteasome (prosome, macropain) 26S subunit, non-ATPase, 7

Omim ID: [157970](#)

Gene Ontology: [Hyperlink](#)

Gene Summary: The 26S proteasome is a multicatalytic proteinase complex with a highly ordered structure composed of 2 complexes, a 20S core and a 19S regulator. The 20S core is composed of 4 rings of 28 non-identical subunits; 2 rings are composed of 7 alpha subunits and 2 rings are composed of 7 beta subunits. The 19S regulator is composed of a base, which contains 6 ATPase subunits and 2 non-ATPase subunits, and a lid, which contains up to 10 non-ATPase subunits. Proteasomes are distributed throughout eukaryotic cells at a high concentration and cleave peptides in an ATP/ubiquitin-dependent process in a non-lysosomal pathway. An essential function of a modified proteasome, the immunoproteasome, is the processing of class I MHC peptides. This gene encodes a non-ATPase subunit of the 19S regulator. A pseudogene has been identified on chromosome 17. [provided by RefSeq]

Other Designations: 26S proteasome non-ATPase regulatory subunit 7,26S proteasome regulatory subunit S12,Moloney leukemia virus-34 proviral integration,Mov34 homolog,proteasome (prosome, macropain) 26S subunit, non-ATPase, 7 (Mov34 homolog),proteasome 26S non-ATPase subunit

Gene Pathway

[Proteasome](#)

Related Disease

[Genetic Predisposition to Disease](#)

