



SZABO SCANDIC

Part of Europa Biosite

Produktinformation



Forschungsprodukte & Biochemikalien



Zellkultur & Verbrauchsmaterial



Diagnostik & molekulare Diagnostik



Laborgeräte & Service

Weitere Information auf den folgenden Seiten!
See the following pages for more information!



Lieferung & Zahlungsart

siehe unsere [Liefer- und Versandbedingungen](#)

Zuschläge

- Mindermengenzuschlag
- Trockeneiszuschlag
- Gefahrgutzuschlag
- Expressversand

SZABO-SCANDIC HandelsgmbH

Quellenstraße 110, A-1100 Wien

T. +43(0)1 489 3961-0

F. +43(0)1 489 3961-7

mail@szabo-scandic.com

www.szabo-scandic.com

[linkedin.com/company/szaboscandic](https://www.linkedin.com/company/szaboscandic) 

PSMD7 293T Cell Transient Overexpression Lysate(Denatured)

Catalog # : H00005713-T01

規格 : [100 uL]

List All

Specification

Transfected Cell Line: 293T

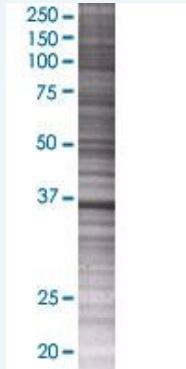
Plasmid: pCMV-PSMD7 full-length

Host: Human

Theoretical MW (kDa): 37

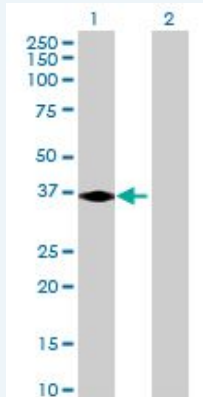
Quality Control Testing: Transient overexpression cell lysate was tested with Anti-PSMD7 antibody (H00005713-B01) by Western Blots.

SDS-PAGE Gel



PSMD7 transfected lysate.

Western Blot



Lane 1: PSMD7 transfected lysate (37 KDa)

Lane 2: Non-transfected lysate.

Storage Buffer: 1X Sample Buffer (50 mM Tris-HCl, 2% SDS, 10% glycerol, 300 mM 2-mercaptoethanol, 0.01% Bromophenol blue)

Storage Instruction: Store at -80°C. Aliquot to avoid repeated freezing and thawing.

MSDS:  [Download](#)

Applications

Application Image

Western Blot

Western Blot

Gene Information

Entrez GeneID: [5713](#)

GeneBank Accession#: [NM_002811](#)

Protein Accession#: [NP_002802](#)

Gene Name: PSMD7

Gene Alias: MOV34,P40,Rpn8,S12

Gene Description: proteasome (prosome, macropain) 26S subunit, non-ATPase, 7

Omim ID: [157970](#)

Gene Ontology: [Hyperlink](#)

Gene Summary: The 26S proteasome is a multicatalytic proteinase complex with a highly ordered structure composed of 2 complexes, a 20S core and a 19S regulator. The 20S core is composed of 4 rings of 28 non-identical subunits; 2 rings are composed of 7 alpha subunits and 2 rings are composed of 7 beta subunits. The 19S regulator is composed of a base, which contains 6 ATPase subunits and 2 non-ATPase subunits, and a lid, which contains up to 10 non-ATPase subunits. Proteasomes are distributed throughout eukaryotic cells at a high concentration and cleave peptides in an ATP/ubiquitin-dependent process in a non-lysosomal pathway. An essential function of a modified proteasome, the immunoproteasome, is the processing of class I MHC peptides. This gene encodes a non-ATPase subunit of the 19S regulator. A pseudogene has been identified on chromosome 17. [provided by RefSeq]

Other Designations: 26S proteasome non-ATPase regulatory subunit 7,26S proteasome regulatory subunit S12,Moloney leukemia virus-34 proviral integration,Mov34 homolog,proteasome (prosome, macropain) 26S subunit, non-ATPase, 7 (Mov34 homolog),proteasome 26S non-ATPase subunit

Gene Pathway

[Proteasome](#)

Related Disease

[Genetic Predisposition to Disease](#)

[服務條款](#) | [隱私權政策](#) | [著作及商標](#) | [網站地圖](#)

©2016 亞諾法生技股份有限公司 Abnova Corporation. 版權所有.