



# SZABO SCANDIC

Part of Europa Biosite

## Produktinformation



Forschungsprodukte & Biochemikalien



Zellkultur & Verbrauchsmaterial



Diagnostik & molekulare Diagnostik



Laborgeräte & Service

Weitere Information auf den folgenden Seiten!  
See the following pages for more information!



### Lieferung & Zahlungsart

siehe unsere [Liefer- und Versandbedingungen](#)

### Zuschläge

- Mindermengenzuschlag
- Trockeneiszuschlag
- Gefahrgutzuschlag
- Expressversand

### SZABO-SCANDIC HandelsgmbH

Quellenstraße 110, A-1100 Wien

T. +43(0)1 489 3961-0

F. +43(0)1 489 3961-7

[mail@szabo-scandic.com](mailto:mail@szabo-scandic.com)

[www.szabo-scandic.com](http://www.szabo-scandic.com)

[linkedin.com/company/szaboscandic](https://www.linkedin.com/company/szaboscandic) 



**PSMD8 MaxPab mouse polyclonal antibody (B01)** MaxPab®

Catalog # : H00005714-B01

規格 : [ 50 uL ]

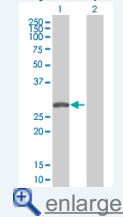
[List All](#)

**Specification**

<b>Product Description:</b>	Mouse polyclonal antibody raised against a full-length human PSMD8 protein.
<b>Immunogen:</b>	PSMD8 (NP_002803, 1 a.a. ~ 257 a.a) full-length human protein.
<b>Sequence:</b>	MYEQLKGEWNRKSPNLSKCGEELGRLKLVLLELNFLPTTGTKLTKQQLI LARDILEIGAQWSILRKDIPSFERYMAQLKCYFDYKEQLPESAYMHQLL GLNLLFLLSQNRVAEFHTELERLPAKDIQTNVYIKHPVSLEQYLMEGSYNK VFLAKGNIPAESYTFIDILLDIRDEIAGCIEKAYEKILFTEATRILFFNTPKK MTDYAKKRGWWLGPNNYYSFASQQQKPEDTTIPSTELAKQVIEYARQLE MIV
<b>Host:</b>	Mouse
<b>Reactivity:</b>	Human
<b>Quality Control Testing:</b>	Antibody reactive against mammalian transfected lysate.
<b>Storage Buffer:</b>	No additive
<b>Storage Instruction:</b>	Store at -20°C or lower. Aliquot to avoid repeated freezing and thawing.
<b>Note:</b>	For IHC and IF applications, antibody purification with Protein A will be needed prior to use.
<b>MSDS:</b>	 <a href="#">Download</a>
<b>Datasheet:</b>	 <a href="#">Download</a>

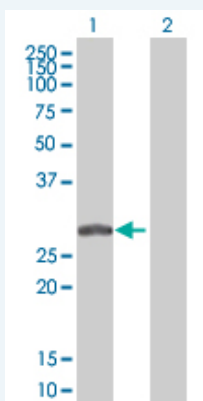
**Application Image**

Western Blot (Transfected lysate)



**Applications**

**Western Blot (Transfected lysate)**



Western Blot analysis of PSMD8 expression in transfected 293T cell line (H00005714-T01) by PSMD8 MaxPab polyclonal antibody.

Lane 1: PSMD8 transfected lysate(38.5 KDa).  
Lane 2: Non-transfected lysate.

## Gene Information

**Entrez GeneID:** [5714](#)

**GeneBank Accession#:** [NM\\_002812](#)

**Protein Accession#:** [NP\\_002803](#)

**Gene Name:** PSMD8

**Gene Alias:** HIP6,HYPF,MGC1660,Nin1p,Rpn12,S14,p31

**Gene Description:** proteasome (prosome, macropain) 26S subunit, non-ATPase, 8

**Gene Ontology:** [Hyperlink](#)

**Gene Summary:** The 26S proteasome is a multicatalytic proteinase complex with a highly ordered structure composed of 2 complexes, a 20S core and a 19S regulator. The 20S core is composed of 4 rings of 28 non-identical subunits; 2 rings are composed of 7 alpha subunits and 2 rings are composed of 7 beta subunits. The 19S regulator is composed of a base, which contains 6 ATPase subunits and 2 non-ATPase subunits, and a lid, which contains up to 10 non-ATPase subunits. Proteasomes are distributed throughout eukaryotic cells at a high concentration and cleave peptides in an ATP/ubiquitin-dependent process in a non-lysosomal pathway. An essential function of a modified proteasome, the immunoproteasome, is the processing of class I MHC peptides. This gene encodes a non-ATPase subunit of the 19S regulator. A pseudogene has been identified on chromosome 1. [provided by RefSeq]

**Other Designations:** 26S proteasome non-ATPase regulatory subunit 8,26S proteasome regulatory subunit S14,26S proteasome regulatory subunit p31,proteasome 26S non-ATPase subunit 8

## Gene Pathway

[Proteasome](#)