



SZABO SCANDIC

Part of Europa Biosite

Produktinformation



Forschungsprodukte & Biochemikalien



Zellkultur & Verbrauchsmaterial



Diagnostik & molekulare Diagnostik



Laborgeräte & Service

Weitere Information auf den folgenden Seiten!
See the following pages for more information!



Lieferung & Zahlungsart

siehe unsere [Liefer- und Versandbedingungen](#)

Zuschläge

- Mindermengenzuschlag
- Trockeneiszuschlag
- Gefahrgutzuschlag
- Expressversand

SZABO-SCANDIC HandelsgmbH

Quellenstraße 110, A-1100 Wien

T. +43(0)1 489 3961-0

F. +43(0)1 489 3961-7

mail@szabo-scandic.com

www.szabo-scandic.com

[linkedin.com/company/szaboscandic](https://www.linkedin.com/company/szaboscandic) 



PSMD8 MaxPab mouse polyclonal antibody (B02) MaxPab®

Catalog # : H00005714-B02

規格 : [50 uL]

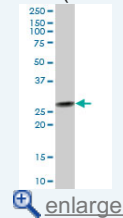
[List All](#)

Specification

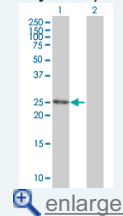
Product Description:	Mouse polyclonal antibody raised against a full-length human PSMD8 protein.
Immunogen:	PSMD8 (NP_002803, 1 a.a. ~ 257 a.a) full-length human protein.
Sequence:	MYEQLKGEWNRKSPNLSKCGEELGRLKLVLLELNFLPTTGTKLTKQQLI LARDILEIGAQWSILRKDIPSFERYMAQLKCYFFDYKEQLPESAYMHQLL GLNLLFLLSQNRVAEFHTELERLPAKDIQTNVYIKHPVSLEQYLMEGSYNK VFLAKGNIPAESYTFIDILLDIRDEIAGCIEKAYEKILFTEATRILFFNTPKK MTDYAKKRGWWLGPNNYYSFASQQQKPEDTTIPSTELAKQVIEYARQLE MIV
Host:	Mouse
Reactivity:	Human
Quality Control Testing:	Antibody reactive against mammalian transfected lysate.
Storage Buffer:	No additive
Storage Instruction:	Store at -20°C or lower. Aliquot to avoid repeated freezing and thawing.
Note:	For IHC and IF applications, antibody purification with Protein A will be needed prior to use.
MSDS:	 Download
Datasheet:	 Download

Application Image

Western Blot (Tissue lysate)

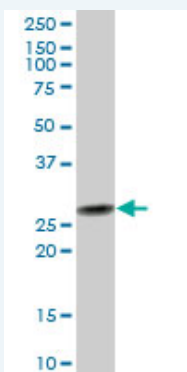


Western Blot (Transfected lysate)



Applications

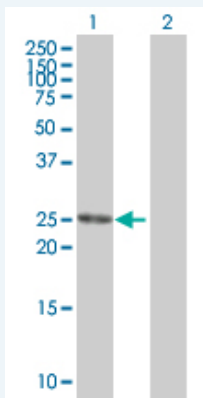
Western Blot (Tissue lysate)



PSMD8 MaxPab polyclonal antibody. Western Blot analysis of PSMD8 expression in human placenta.

 [Protocol Download](#)


Western Blot (Transfected lysate)



Western Blot analysis of PSMD8 expression in transfected 293T cell line (H00005714-T02) by PSMD8 MaxPab polyclonal antibody.

Lane 1: PSMD8 transfected lysate(28.27 KDa).

Lane 2: Non-transfected lysate.

 [Protocol Download](#)

Gene Information

Entrez GeneID: [5714](#)

GeneBank [NM_002812](#)

Accession#:

Protein [NP_002803](#)

Accession#:

Gene Name: PSMD8

Gene Alias: HIP6,HYPF,MGC1660,Nin1p,Rpn12,S14,p31

Gene proteasome (prosome, macropain) 26S subunit, non-ATPase, 8

Description:

Gene Ontology: [Hyperlink](#)

Gene Summary: The 26S proteasome is a multicatalytic proteinase complex with a highly ordered structure composed of 2 complexes, a 20S core and a 19S regulator. The 20S core is composed of 4 rings of 28 non-identical subunits; 2 rings are composed of 7 alpha subunits and 2 rings are composed of 7 beta subunits. The 19S regulator is composed of a base, which contains 6 ATPase subunits and 2 non-ATPase subunits, and a lid, which contains up to 10 non-ATPase subunits. Proteasomes are distributed throughout eukaryotic cells at a high concentration and cleave peptides in an ATP/ubiquitin-dependent process in a non-lysosomal pathway. An essential function of a modified proteasome, the immunoproteasome, is the processing of class I MHC peptides. This gene encodes a non-ATPase subunit of the 19S regulator. A pseudogene has been identified on chromosome 1. [provided by RefSeq]

Other Designations: 26S proteasome non-ATPase regulatory subunit 8,26S proteasome regulatory subunit S14,26S proteasome regulatory subunit p31,proteasome 26S non-ATPase subunit 8

Gene Pathway

[Proteasome](#)

