



# SZABO SCANDIC

Part of Europa Biosite

## Produktinformation



Forschungsprodukte & Biochemikalien



Zellkultur & Verbrauchsmaterial



Diagnostik & molekulare Diagnostik



Laborgeräte & Service

Weitere Information auf den folgenden Seiten!  
See the following pages for more information!



### Lieferung & Zahlungsart

siehe unsere [Liefer- und Versandbedingungen](#)

### Zuschläge

- Mindermengenzuschlag
- Trockeneiszuschlag
- Gefahrgutzuschlag
- Expressversand

### SZABO-SCANDIC HandelsgmbH

Quellenstraße 110, A-1100 Wien

T. +43(0)1 489 3961-0

F. +43(0)1 489 3961-7

[mail@szabo-scandic.com](mailto:mail@szabo-scandic.com)

[www.szabo-scandic.com](http://www.szabo-scandic.com)

[linkedin.com/company/szaboscandic](https://www.linkedin.com/company/szaboscandic) 



**PSMD9 MaxPab mouse polyclonal antibody (B01)** MaxPab®

Catalog # : H00005715-B01

規格 : [ 50 uL ]

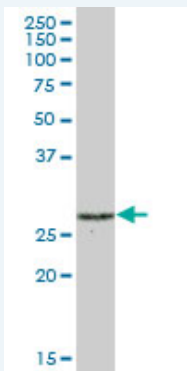
[List All](#)

**Specification**

<b>Product Description:</b>	Mouse polyclonal antibody raised against a full-length human PSMD9 protein.
<b>Immunogen:</b>	PSMD9 (NP_002804.2, 1 a.a. ~ 223 a.a) full-length human protein.
<b>Sequence:</b>	MSDEEARQSGGSSQAGVVTSDVQELMRRKEEIEAQIKANYDVLESQK GIGMNEPLVDCGYPRSDVDLYQVRTARHNIICLQNDHKAVMKQVEEALH QLHARDKEKQARDMAEAHKEAMSRKLGQSESQGPPRAFVKVNSISPGS PASIAGLQVDDEIVEFGSVNTQNFQSLHNIGSVVQHSEGKPLNVTVIRRGE KHQLRLVPTRWAGKGLLGCNIIPLQR
<b>Host:</b>	Mouse
<b>Reactivity:</b>	Human
<b>Quality Control Testing:</b>	Antibody reactive against mammalian transfected lysate.
<b>Storage Buffer:</b>	No additive
<b>Storage Instruction:</b>	Store at -20°C or lower. Aliquot to avoid repeated freezing and thawing.
<b>Note:</b>	For IHC and IF applications, antibody purification with Protein A will be needed prior to use.
<b>MSDS:</b>	 <a href="#">Download</a>
<b>Datasheet:</b>	 <a href="#">Download</a>

**Applications**

**Western Blot (Tissue lysate)**



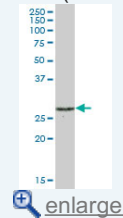
PSMD9 MaxPab polyclonal antibody. Western Blot analysis of PSMD9 expression in human placenta.


 [Protocol Download](#)

**Western Blot (Transfected lysate)**

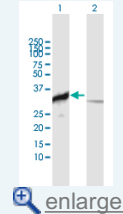
**Application Image**


**Western Blot (Tissue lysate)**



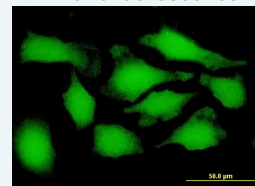
 [enlarge](#)


**Western Blot (Transfected lysate)**

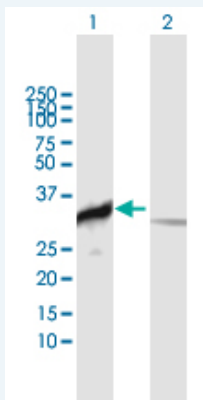


 [enlarge](#)

**Immunofluorescence**



 [enlarge](#)

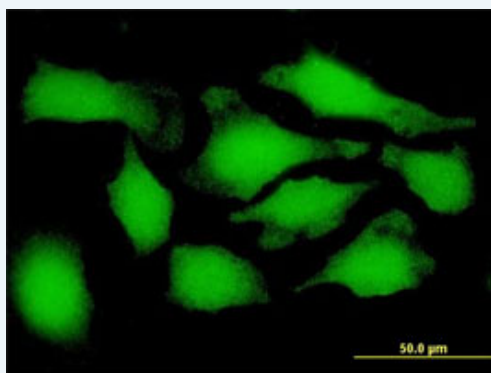


Western Blot analysis of PSMD9 expression in transfected 293T cell line ([H00005715-T01](#)) by PSMD9 MaxPab polyclonal antibody.

Lane 1: PSMD9 transfected lysate(24.53 KDa).  
Lane 2: Non-transfected lysate.

[Protocol Download](#)

### Immunofluorescence



enlarge this image

Immunofluorescence of purified MaxPab antibody to PSMD9 on HeLa cell. [antibody concentration 10 ug/ml]

[Protocol Download](#)

### Gene Information

Entrez GeneID: [5715](#)

GeneBank [NM\\_002813.4](#)  
Accession#:

Protein [NP\\_002804.2](#)  
Accession#:

Gene Name: PSMD9

Gene Alias: MGC8644,Rpn4,p27

Gene Description: proteasome (prosome, macropain) 26S subunit, non-ATPase, 9

Omim ID: [603146](#)

Gene Ontology: [Hyperlink](#)

**Gene Summary:** The 26S proteasome is a multicatalytic proteinase complex with a highly ordered structure composed of 2 complexes, a 20S core and a 19S regulator. The 20S core is composed of 4 rings of 28 non-identical subunits; 2 rings are composed of 7 alpha subunits and 2 rings are composed of 7 beta subunits. The 19S regulator is composed of a base, which contains 6 ATPase subunits and 2 non-ATPase subunits, and a lid, which contains up to 10 non-ATPase subunits. Proteasomes are distributed throughout eukaryotic cells at a high concentration and

cleave peptides in an ATP/ubiquitin-dependent process in a non-lysosomal pathway. An essential function of a modified proteasome, the immunoproteasome, is the processing of class I MHC peptides. This gene encodes a non-ATPase subunit of the 19S regulator. [provided by RefSeq]

---

**Other** 26S proteasome regulatory subunit p27, homolog of rat Bridge  
**Designations:** 1, proteasome 26S non-ATPase regulatory subunit 9, proteasome 26S non-ATPase subunit 9

---

#### **Related Disease**

---

[Depressive Disorder, Major](#), [Diabetes Mellitus, Type 2](#), [Genetic Predisposition to Disease Inflammation](#)

---

[服務條款](#) | [隱私權政策](#) | [著作及商標](#) | [網站地圖](#)

©2016 亞諾法生技股份有限公司 Abnova Corporation. 版權所有.